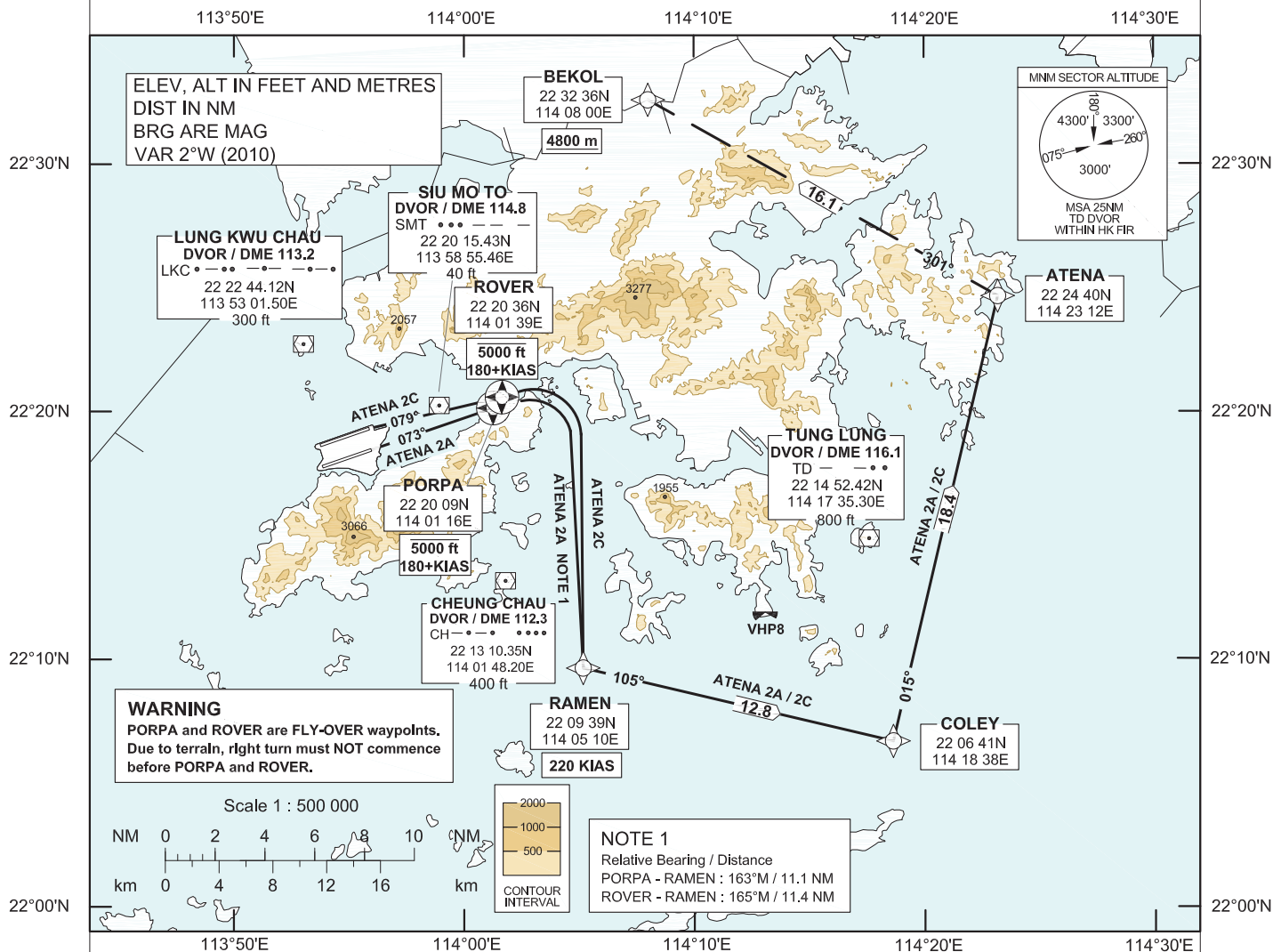


**STANDARD DEPARTURE CHART-
INSTRUMENT (SID) - ICAO**

Transition Altitude 9 000 ft
Hong Kong Tower South 118.4
Hong Kong Tower North 118.2
Hong Kong Departure 123.8

**HONG KONG / Intl (VHHH)
RNAV (GNSS) ATENA 2A SID RWY 07R
RNAV (GNSS) ATENA 2C SID RWY 07L**

1. For RNAV (GNSS) SID, aircraft must be approved by State of Registry in accordance with ICAO RNP 1 standard or equivalent (see GEN 1.5 para 3.5.2 on page GEN 1.5-2). Carriage of certified GNSS receiver is mandatory.
2. In the event that PBN performance ceases to comply with the requirements for RNP 1 after departure, pilots must notify ATC as soon as possible. ATC assistance would be provided as necessary.
3. Only specific categories of flights (e.g. SAR) as stated in GEN 1.5 para 3.5.2.4 are exempted from the RNP 1 requirement. These flights shall fly the contingency procedures as detailed in AD 2.22 para 2.2.3.5.
4. PORPA and ROVER are **FLY-OVER** waypoints. All other waypoints are fly-by.
5. (DER) - Departure End of Runway.
6. **Noise Mitigating SID for use between 1501 - 2300 UTC (see VHHH AD 2.21 para 2.4 on page AD 2-22).**



ATENA 2A SID RWY 07R

RNP 1 Procedure
PORPA[A5000-,K180+;R] - RAMEN[K220;L] - COLEY[L] -
ATENA[L] - BEKOL[4800m+]

CLIMB REQUIREMENT
Initial climb to 5 000 ft. Expect further climb when instructed by
ATC. Cross PORPA at 5 000 ft or below. Cross BEKOL at
4 800 m or above.

TERRAIN CLEARANCE
Minimum climb gradient of 4.9% (298 ft/NM) until leaving 1 400
ft is required.

SPEED RESTRICTION
Speed restriction of 180 KIAS or greater at PORPA and 220
KIAS until RAMEN.

ATENA 2C SID RWY 07L

RNP 1 Procedure
RWY07L(DER)[R] - ROVER[A5000-,K180+;R] -
RAMEN[K220;L] - COLEY[L] - ATENA[L] - BEKOL[4800m+]

CLIMB REQUIREMENT
Initial climb to 5 000 ft. Expect further climb when instructed by
ATC. Cross ROVER at 5 000 ft or below. Cross BEKOL at
4 800 m or above.

TERRAIN CLEARANCE
Minimum climb gradient of 4.1% (250 ft/NM) until leaving 1 400
ft is required.

SPEED RESTRICTION
Speed restriction of 180 KIAS or greater at ROVER and 220
KIAS until RAMEN.

CHANGE: Update of text.

FMC Database Coding Reference for Hong Kong RNAV_(GNSS) SIDs

Designator: ATENA 2A Runway 07R (Noise Mitigating Procedure)

<i>Serial Number</i>	<i>Path Descriptor</i>	<i>Waypoint Identifier</i>	<i>Fly-over</i>	<i>Course/Track (°M)</i>	<i>Magnetic Variation</i>	<i>Distance (NM)</i>	<i>Turn Dir</i>	<i>Altitude (ft/m)</i>	<i>Speed (KIAS)</i>	<i>Navigation Specification</i>
01	CF	PORPA	Y	073	+2.0	5.0	R	5000ft-	180+	RNP 1
02	DF	RAMEN	-	-	+2.0	11.1	L	-	220	RNP 1
03	TF	COLEY	-	105	+2.0	12.8	L	-	-	RNP 1
04	TF	ATENA	-	015	+2.0	18.4	L	-	-	RNP 1
05	TF	BEKOL	-	301	+2.0	16.1	-	4800m+	-	RNP 1

Designator: ATENA 2C Runway 07L (Noise Mitigating Procedure)

<i>Serial Number</i>	<i>Path Descriptor</i>	<i>Waypoint Identifier</i>	<i>Fly-over</i>	<i>Course/Track (°M)</i>	<i>Magnetic Variation</i>	<i>Distance (NM)</i>	<i>Turn Dir</i>	<i>Altitude (ft/m)</i>	<i>Speed (KIAS)</i>	<i>Navigation Specification</i>
01	CF	RW07L (DER)	Y	073	+2.0	-	-	-	-	RNP 1
02	FA	RW07L (DER)	Y	073	+2.0	-	R	430ft+	-	RNP 1
03	CF	ROVER	Y	079	+2.0	5.3	R	5000ft-	180+	RNP 1
04	DF	RAMEN	-	-	+2.0	11.4	L	-	220	RNP 1
05	TF	COLEY	-	105	+2.0	12.8	L	-	-	RNP 1
06	TF	ATENA	-	015	+2.0	18.4	L	-	-	RNP 1
07	TF	BEKOL	-	301	+2.0	16.1	-	4800m+	-	RNP 1

Waypoint and Coordinates

<i>Waypoint Identifier</i>	<i>Coordinates (WGS-84)</i>
RWY 07L (DER)	22 19 21.08N 113 56 02.35E
PORPA	22 20 09.10N 114 01 16.30E
ROVER	22 20 35.58N 114 01 39.12E
RAMEN	22 09 39.22N 114 05 09.89E
COLEY	22 06 41.03N 114 18 37.63E
ATENA	22 24 39.85N 114 23 11.88E
BEKOL	22 32 36.00N 114 08 00.00E