

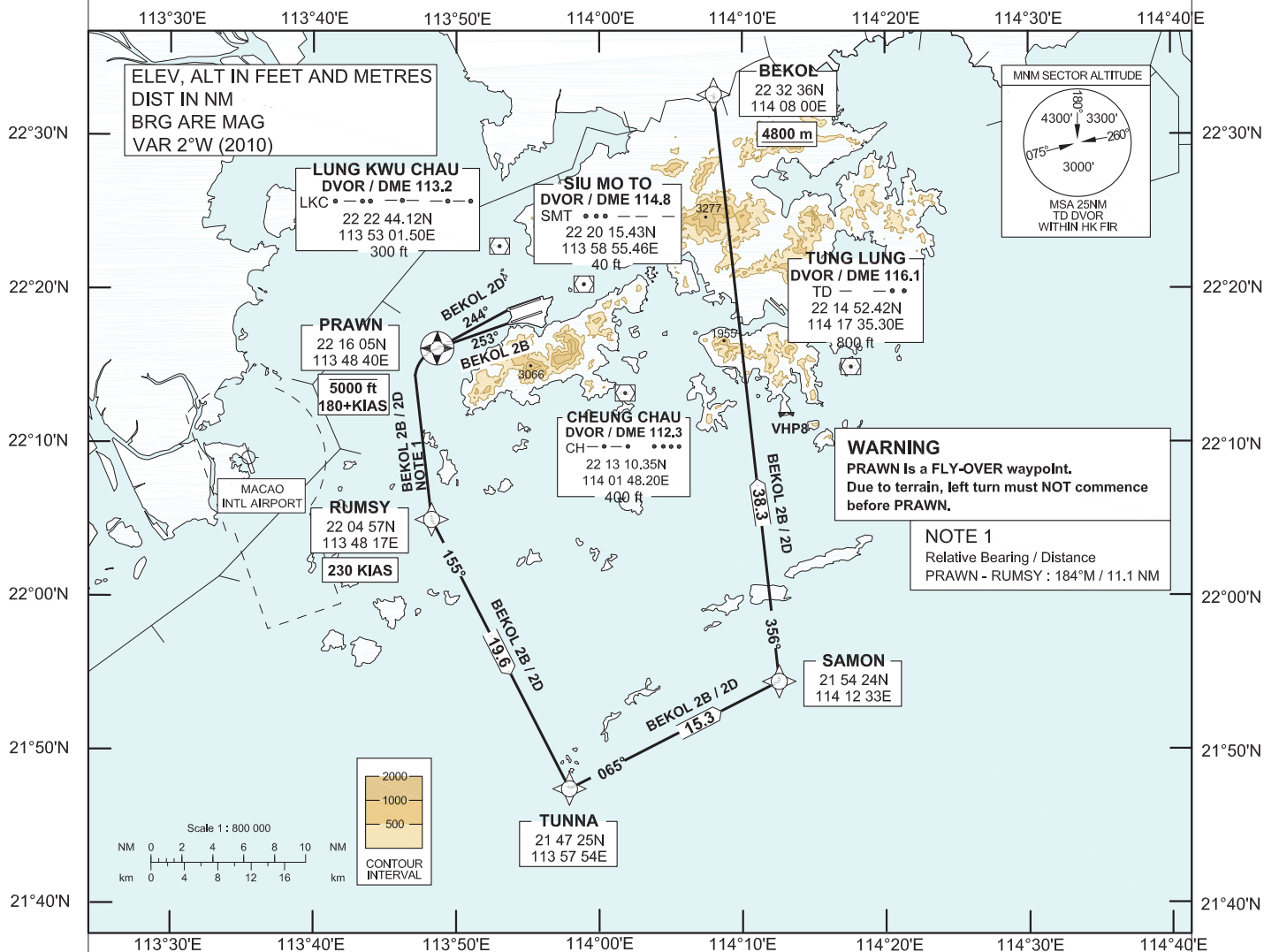
AIP HONG KONG

**STANDARD DEPARTURE CHART-
INSTRUMENT (SID) - ICAO**

Transition Altitude	9 000 ft
Hong Kong Tower South	118.4
Hong Kong Tower North	118.2
Hong Kong Departure	123.8

**HONG KONG / Intl (VHHH)
RNAV (GNSS) BEKOL 2B SID RWY 25L
RNAV (GNSS) BEKOL 2D SID RWY 25R**

1. For RNAV (GNSS) SID, aircraft must be approved by State of Registry in accordance with ICAO RNP 1 standard or equivalent (see GEN 1.5 para 3.5.2 on page GEN 1.5-2). Carriage of certified GNSS receiver is mandatory.
2. In the event that PBN performance ceases to comply with the requirements for RNP 1 after departure, pilots must notify ATC as soon as possible. ATC assistance would be provided as necessary.
3. Only specific categories of flights (e.g. SAR) as stated in GEN 1.5 para 3.5.2.4 are exempted from the RNP 1 requirement. These flights shall fly the contingency procedures as detailed in AD 2.22 para 2.2.3.5.
4. PRAWN is a **FLY-OVER** waypoint. All other waypoints are fly-by.
5. (DER) - Departure End of Runway.



BEKOL 2B SID RWY 25L

RNP 1 Procedure
PRAWN[A5000-,K180+;L] - RUMSY[K230;L] - TUNNA[L] - SAMON[L] - BEKOL[4800m+]

CLIMB REQUIREMENT
Initial climb to 5 000 ft. Expect further climb when instructed by ATC. Cross PRAWN at 5 000 ft or below. Cross BEKOL at 4 800 m or above.

TERRAIN CLEARANCE
Minimum climb gradient of 3.3% (201 ft/NM).

SPEED RESTRICTION
Speed restriction of 180 KIAS or greater at PRAWN and 230 KIAS until RUMSY.

BEKOL 2D SID RWY 25R

RNP 1 Procedure
RWY25R(DER)[L] - PRAWN[A5000-,K180+;L] - RUMSY[K230;L] - TUNNA[L] - SAMON[L] - BEKOL[4800m+]

CLIMB REQUIREMENT
Initial climb to 5 000 ft. Expect further climb when instructed by ATC. Cross PRAWN at 5 000 ft or below. Cross BEKOL at 4 800 m or above.

TERRAIN CLEARANCE
Minimum climb gradient of 3.3% (201 ft/NM).

SPEED RESTRICTION
Speed restriction of 180 KIAS or greater at PRAWN and 230 KIAS until RUMSY.

CHANGE: Update of text.

FMC Database Coding Reference for Hong Kong RNAV_(GNSS) SIDs

Designator: BEKOL 2B Runway 25L

<i>Serial Number</i>	<i>Path Descriptor</i>	<i>Waypoint Identifier</i>	<i>Fly-over</i>	<i>Course/Track (°M)</i>	<i>Magnetic Variation</i>	<i>Distance (NM)</i>	<i>Turn Dir</i>	<i>Altitude (ft/m)</i>	<i>Speed (KIAS)</i>	<i>Navigation Specification</i>
01	CF	PRAWN	Y	253	+2.0	5.0	L	5000ft-	180+	RNP 1
02	DF	RUMSY	-	-	+2.0	11.1	L	-	230	RNP 1
03	TF	TUNNA	-	155	+2.0	19.6	L	-	-	RNP 1
04	TF	SAMON	-	065	+2.0	15.3	L	-	-	RNP 1
05	TF	BEKOL	-	356	+2.0	38.3	-	4800m+	-	RNP 1

Designator: BEKOL 2D Runway 25R

<i>Serial Number</i>	<i>Path Descriptor</i>	<i>Waypoint Identifier</i>	<i>Fly-over</i>	<i>Course/Track (°M)</i>	<i>Magnetic Variation</i>	<i>Distance (NM)</i>	<i>Turn Dir</i>	<i>Altitude (ft/m)</i>	<i>Speed (KIAS)</i>	<i>Navigation Specification</i>
01	CF	RW25R (DER)	Y	253	+2.0	-	-	-	-	RNP 1
02	FA	RW25R (DER)	Y	253	+2.0	-	L	430ft+	-	RNP 1
03	CF	PRAWN	Y	244	+2.0	5.2	L	5000ft-	180+	RNP 1
04	DF	RUMSY	-	-	+2.0	11.1	L	-	230	RNP 1
05	TF	TUNNA	-	155	+2.0	19.6	L	-	-	RNP 1
06	TF	SAMON	-	065	+2.0	15.3	L	-	-	RNP 1
07	TF	BEKOL	-	356	+2.0	38.3	-	4800m+	-	RNP 1

Waypoint and Coordinates

<i>Waypoint Identifier</i>	<i>Coordinates (WGS-84)</i>
RW25R (DER)	22 18 34.27N 113 53 37.06E
PRAWN	22 16 05.40N 113 48 40.10E
RUMSY	22 04 56.94N 113 48 16.79E
TUNNA	21 47 25.00N 113 57 54.00E
SAMON	21 54 23.73N 114 12 32.95E
BEKOL	22 32 36.00N 114 08 00.00E