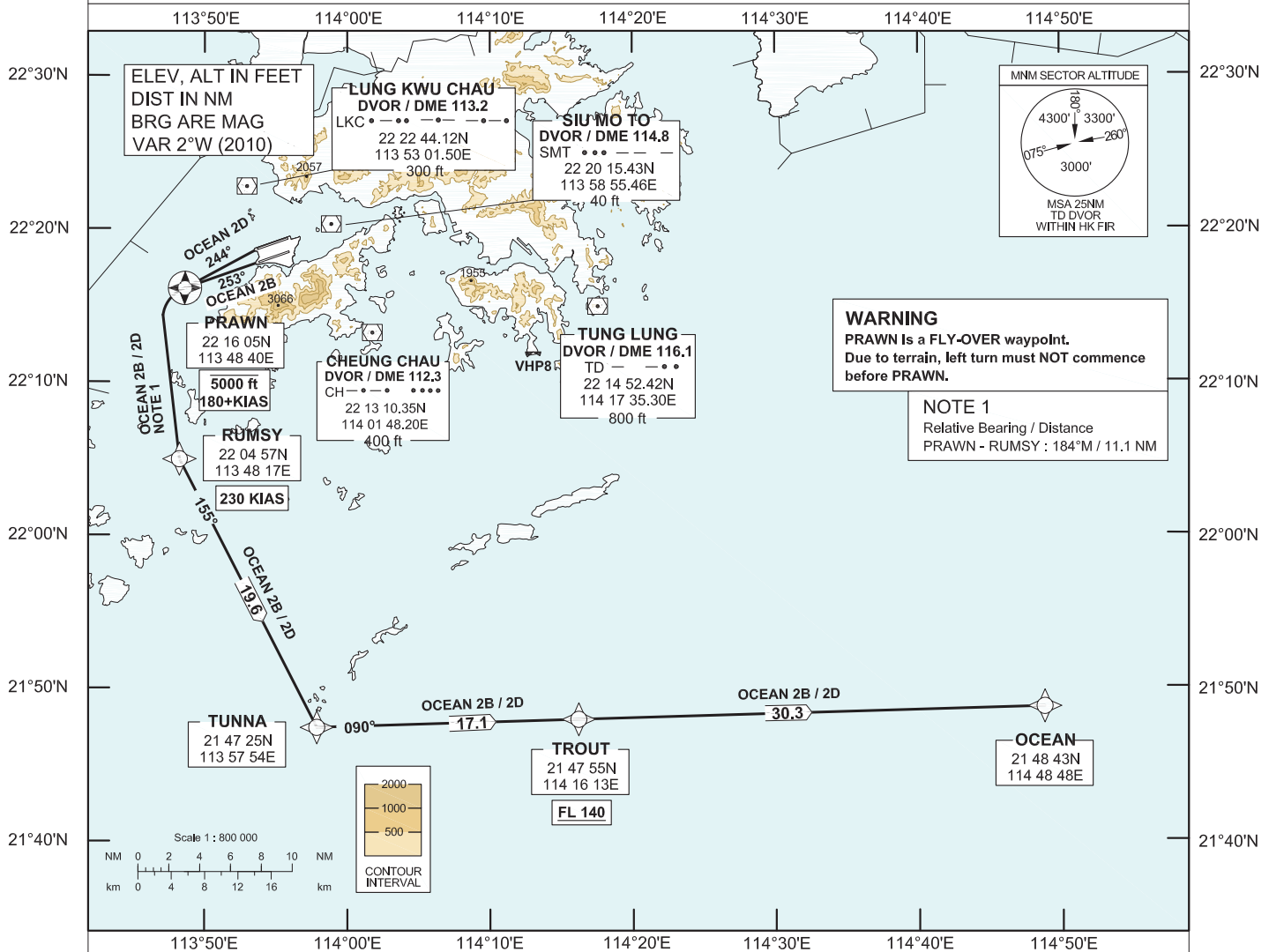


**STANDARD DEPARTURE CHART-
INSTRUMENT (SID) - ICAO**

Transition Altitude	9 000 ft
Hong Kong Tower South	118.4
Hong Kong Tower North	118.2
Hong Kong Departure	123.8

**HONG KONG / Intl (VHHK)
RNAV (GNSS) OCEAN 2B SID RWY 25L
RNAV (GNSS) OCEAN 2D SID RWY 25R**

1. For RNAV (GNSS) SID, aircraft must be approved by State of Registry in accordance with ICAO RNP 1 standard or equivalent (see GEN 1.5 para 3.5.2 on page GEN 1.5-2). Carriage of certified GNSS receiver is mandatory.
2. In the event that PBN performance ceases to comply with the requirements for RNP 1 after departure, pilots must notify ATC as soon as possible. ATC assistance would be provided as necessary.
3. Only specific categories of flights (e.g. SAR) as stated in GEN 1.5 para 3.5.2.4 are exempted from the RNP 1 requirement. These flights shall fly the contingency procedures as detailed in AD 2.22 para 2.2.3.5.
4. PRAWN is a **FLY-OVER** waypoint. All other waypoints are fly-by.
5. (DER) - Departure End of Runway.



OCEAN 2B SID RWY 25L

RNP 1 Procedure

PRAWN[A5000-,K180+;L] - RUMSY[K230;L] - TUNNA[L] - TROUT[FL140+] - OCEAN

CLIMB REQUIREMENT

Initial climb to 5 000 ft. Expect further climb when instructed by ATC. Cross PRAWN at 5 000 ft or below. Cross TROUT at FL140 or above.

TERRAIN CLEARANCE

Minimum climb gradient of 3.3% (201 ft/NM).

SPEED RESTRICTION

Speed restriction of 180 KIAS or greater at PRAWN and 230 KIAS until RUMSY.

OCEAN 2D SID RWY 25R

RNP 1 Procedure

RWY25R(DER)[L] - PRAWN[A5000-,K180+;L] - RUMSY[K230;L] - TUNNA[L] - TROUT[FL140+] - OCEAN

CLIMB REQUIREMENT

Initial climb to 5 000 ft. Expect further climb when instructed by ATC. Cross PRAWN at 5 000 ft or below. Cross TROUT at FL140 or above.

TERRAIN CLEARANCE

Minimum climb gradient of 3.3% (201 ft/NM).

SPEED RESTRICTION

Speed restriction of 180 KIAS or greater at PRAWN and 230 KIAS until RUMSY.

CHANGE: Update of text.

FMC Database Coding Reference for Hong Kong RNAV_(GNSS) SIDs

Designator: OCEAN 2B Runway 25L

<i>Serial Number</i>	<i>Path Descriptor</i>	<i>Waypoint Identifier</i>	<i>Fly-over</i>	<i>Course/Track (°M)</i>	<i>Magnetic Variation</i>	<i>Distance (NM)</i>	<i>Turn Dir</i>	<i>Altitude (ft)</i>	<i>Speed (KIAS)</i>	<i>Navigation Specification</i>
01	CF	PRAWN	Y	253	+2.0	5.0	L	5000-	180+	RNP 1
02	DF	RUMSY	-	-	+2.0	11.1	L	-	230	RNP 1
03	TF	TUNNA	-	155	+2.0	19.6	L	-	-	RNP 1
04	TF	TROUT	-	090	+2.0	17.1	-	FL140+	-	RNP 1
05	TF	OCEAN	-	090	+2.0	30.3	-	-	-	RNP 1

Designator: OCEAN 2D Runway 25R

<i>Serial Number</i>	<i>Path Descriptor</i>	<i>Waypoint Identifier</i>	<i>Fly-over</i>	<i>Course/Track (°M)</i>	<i>Magnetic Variation</i>	<i>Distance (NM)</i>	<i>Turn Dir</i>	<i>Altitude (ft)</i>	<i>Speed (KIAS)</i>	<i>Navigation Specification</i>
01	CF	RW25R (DER)	Y	253	+2.0	-	-	-	-	RNP 1
02	FA	RW25R (DER)	Y	253	+2.0	-	L	430+	-	RNP 1
03	CF	PRAWN	Y	244	+2.0	5.2	L	5000-	180+	RNP 1
04	DF	RUMSY	-	-	+2.0	11.1	L	-	230	RNP 1
05	TF	TUNNA	-	155	+2.0	19.6	L	-	-	RNP 1
06	TF	TROUT	-	090	+2.0	17.1	-	FL140+	-	RNP 1
07	TF	OCEAN	-	090	+2.0	30.3	-	-	-	RNP 1

Waypoint and Coordinates

<i>Waypoint Identifier</i>	<i>Coordinates (WGS-84)</i>
RW25R (DER)	22 18 34.27N 113 53 37.06E
PRAWN	22 16 05.40N 113 48 40.10E
RUMSY	22 04 56.94N 113 48 16.79E
TUNNA	21 47 25.00N 113 57 54.00E
TROUT	21 47 54.87N 114 16 12.74E
OCEAN	21 48 43.00N 114 48 48.00E