

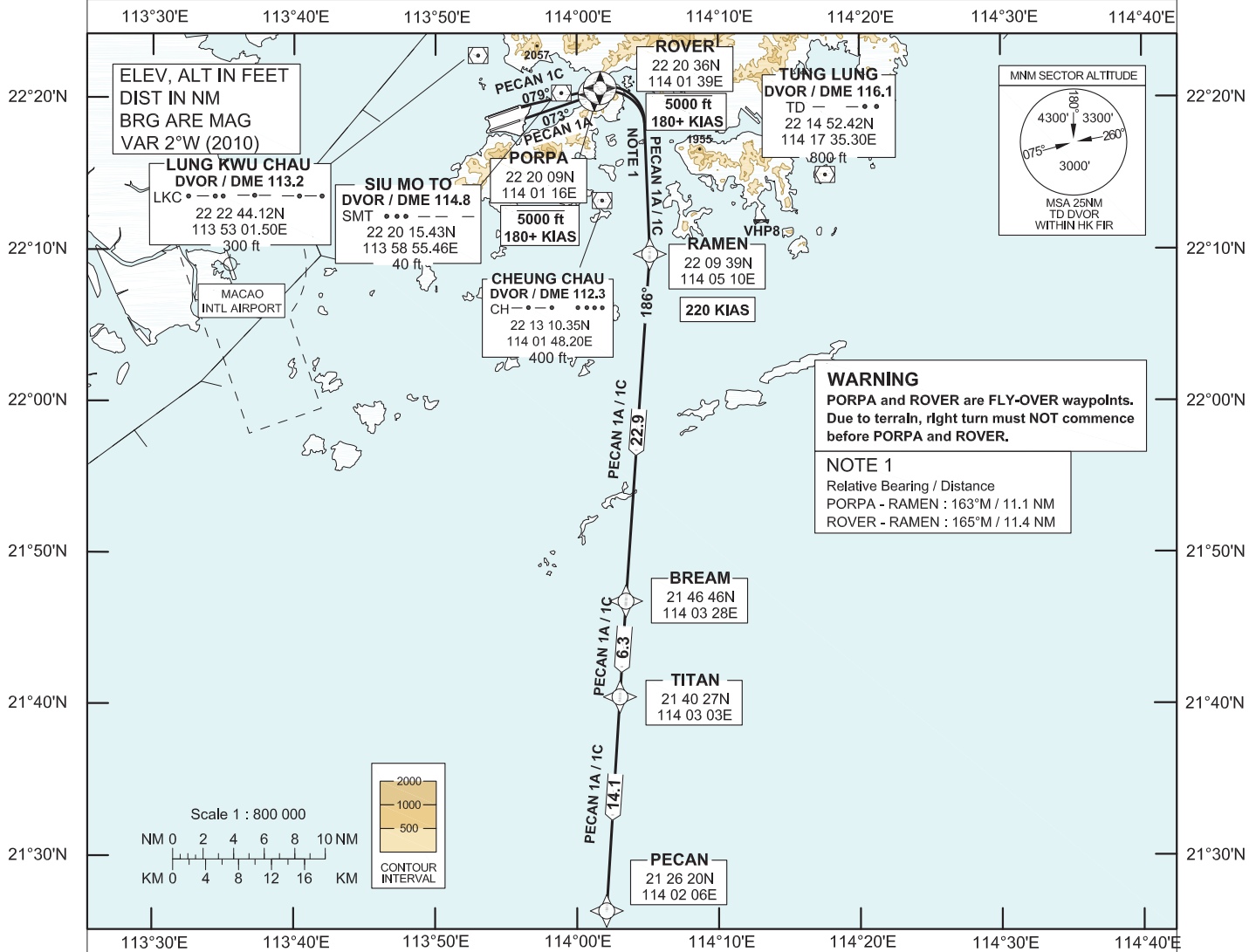
AIP HONG KONG

**STANDARD DEPARTURE CHART-
INSTRUMENT (SID) - ICAO**

| | |
|------------------------------|-------|
| Transition Altitude 9 000 ft | |
| Hong Kong Tower South | 118.4 |
| Hong Kong Tower North | 118.2 |
| Hong Kong Departure | 123.8 |

**HONG KONG / Intl (VHHH)
RNAV (GNSS) PECAN 1A SID RWY 07R
RNAV (GNSS) PECAN 1C SID RWY 07L**

1. For RNAV (GNSS) SID, aircraft must be approved by State of Registry in accordance with ICAO RNP 1 standard or equivalent (see GEN 1.5 para 3.5.2 on page GEN 1.5-2). Carriage of certified GNSS receiver is mandatory.
2. In the event that PBN performance ceases to comply with the requirements for RNP 1 after departure, pilots must notify ATC as soon as possible. ATC assistance would be provided as necessary.
3. Only specific categories of flights (e.g. SAR) as stated in GEN 1.5 para 3.5.2.4 are exempted from the RNP 1 requirement. These flights shall fly the contingency procedures as detailed in AD 2.22 para 2.2.3.5.
4. PORPA and ROVER are **FLY-OVER** waypoints. All other waypoints are fly-by.
5. (DER) - Departure End of Runway.



PECAN 1A SID RWY 07R

RNP 1 Procedure
PORPA[A5000-,K180+;R] - RAMEN[K220;R] - BREAM - TITAN - PECAN

CLIMB REQUIREMENT
Initial climb to 5 000 ft. Expect further climb when instructed by ATC. Cross PORPA at 5 000 ft or below.

TERRAIN CLEARANCE
Minimum climb gradient of 4.9% (298 ft/NM) until leaving 1 400 ft is required.

SPEED RESTRICTION
Speed restriction of 180 KIAS or greater at PORPA and 220 KIAS until RAMEN.

PECAN 1C SID RWY 07L

RNP 1 Procedure
RWY07L(DER)[R] - ROVER[A5000-,K180+;R] - RAMEN[K220;R] - BREAM - TITAN - PECAN

CLIMB REQUIREMENT
Initial climb to 5 000 ft. Expect further climb when instructed by ATC. Cross ROVER at 5 000 ft or below.

TERRAIN CLEARANCE
Minimum climb gradient of 4.1% (250 ft/NM) until leaving 1 400 ft is required.

SPEED RESTRICTION
Speed restriction of 180 KIAS or greater at ROVER and 220 KIAS until RAMEN.

CHANGE: Update of text.

FMC Database Coding Reference for Hong Kong RNAV_(GNSS) SIDs

Designator: PECAN 1A Runway 07R

| <i>Serial Number</i> | <i>Path Descriptor</i> | <i>Waypoint Identifier</i> | <i>Fly-over</i> | <i>Course/Track (°M)</i> | <i>Magnetic Variation</i> | <i>Distance (NM)</i> | <i>Turn Dir</i> | <i>Altitude (ft)</i> | <i>Speed (KIAS)</i> | <i>Navigation Specification</i> |
|----------------------|------------------------|----------------------------|-----------------|--------------------------|---------------------------|----------------------|-----------------|----------------------|---------------------|---------------------------------|
| 01 | CF | PORPA | Y | 073 | +2.0 | 5.0 | R | 5000- | 180+ | RNP 1 |
| 02 | DF | RAMEN | - | - | +2.0 | 11.1 | R | - | 220 | RNP 1 |
| 03 | TF | BREAM | - | 186 | +2.0 | 22.9 | - | - | - | RNP 1 |
| 04 | TF | TITAN | - | 186 | +2.0 | 6.3 | - | - | - | RNP 1 |
| 05 | TF | PECAN | - | 186 | +2.0 | 14.1 | - | - | - | RNP 1 |

Designator: PECAN 1C Runway 07L

| <i>Serial Number</i> | <i>Path Descriptor</i> | <i>Waypoint Identifier</i> | <i>Fly-over</i> | <i>Course/Track (°M)</i> | <i>Magnetic Variation</i> | <i>Distance (NM)</i> | <i>Turn Dir</i> | <i>Altitude (ft)</i> | <i>Speed (KIAS)</i> | <i>Navigation Specification</i> |
|----------------------|------------------------|----------------------------|-----------------|--------------------------|---------------------------|----------------------|-----------------|----------------------|---------------------|---------------------------------|
| 01 | CF | RW07L (DER) | Y | 073 | +2.0 | - | - | - | - | RNP 1 |
| 02 | FA | RW07L (DER) | Y | 073 | +2.0 | - | R | 430+ | - | RNP 1 |
| 03 | CF | ROVER | Y | 079 | +2.0 | 5.3 | R | 5000- | 180+ | RNP 1 |
| 04 | DF | RAMEN | - | - | +2.0 | 11.4 | R | - | 220 | RNP 1 |
| 05 | TF | BREAM | - | 186 | +2.0 | 22.9 | - | - | - | RNP 1 |
| 06 | TF | TITAN | - | 186 | +2.0 | 6.3 | - | - | - | RNP 1 |
| 07 | TF | PECAN | - | 186 | +2.0 | 14.1 | - | - | - | RNP 1 |

Waypoint and Coordinates

| <i>Waypoint Identifier</i> | <i>Coordinates (WGS-84)</i> |
|----------------------------|-----------------------------|
| RWY 07L (DER) | 22 19 21.08N 113 56 02.35E |
| PORPA | 22 20 09.10N 114 01 16.30E |
| ROVER | 22 20 35.58N 114 01 39.12E |
| RAMEN | 22 09 39.22N 114 05 09.89E |
| BREAM | 21 46 46.00N 114 03 28.00E |
| TITAN | 21 40 27.40N 114 03 02.52E |
| PECAN | 21 26 20.19N 114 02 05.64E |