

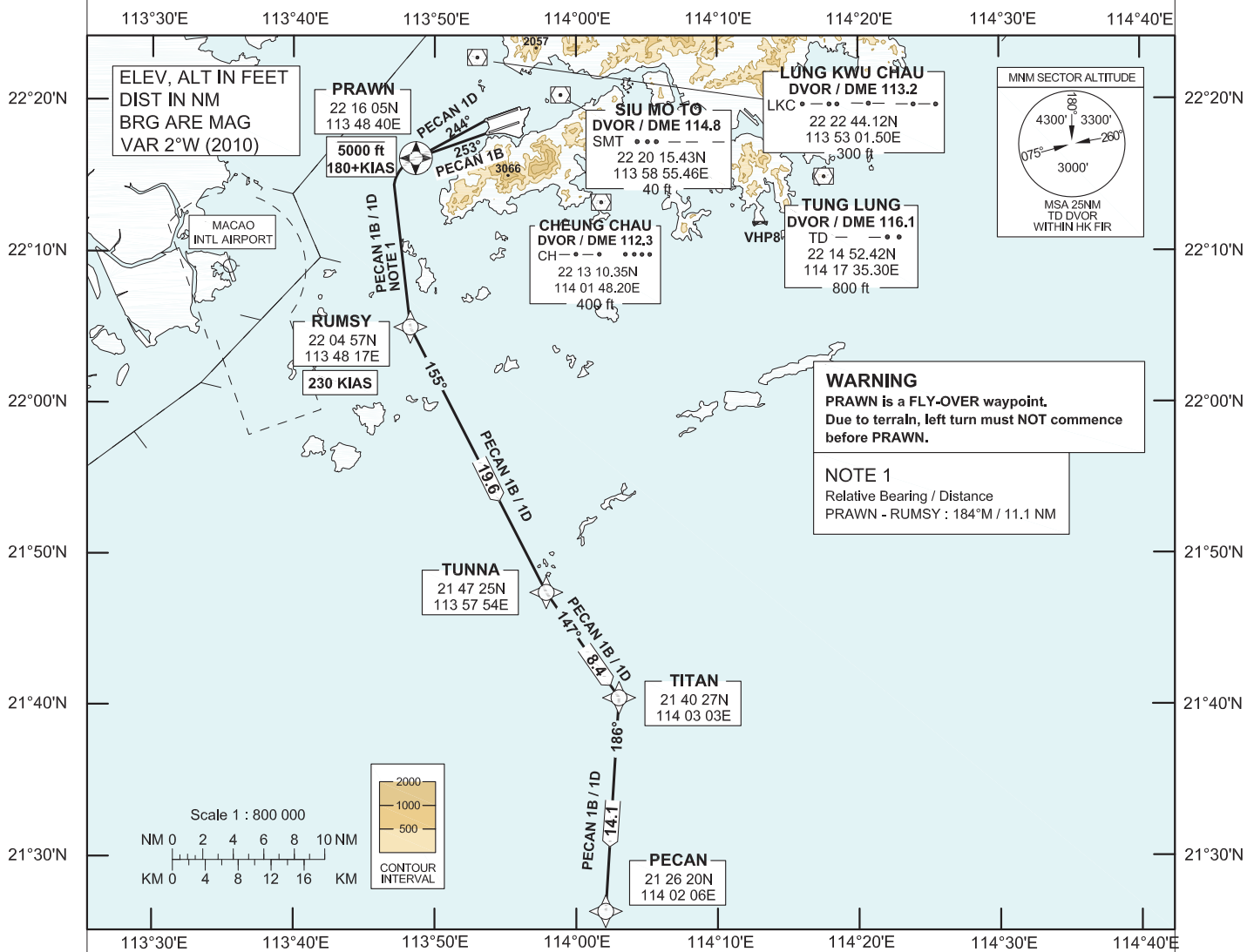
AIP HONG KONG

**STANDARD DEPARTURE CHART-  
INSTRUMENT (SID) - ICAO**

Transition Altitude 9 000 ft  
Hong Kong Tower South 118.4  
Hong Kong Tower North 118.2  
Hong Kong Departure 123.8

**HONG KONG / Intl (VHHK)  
RNAV (GNSS) PECAN 1B SID RWY 25L  
RNAV (GNSS) PECAN 1D SID RWY 25R**

1. For RNAV (GNSS) SID, aircraft must be approved by State of Registry in accordance with ICAO RNP 1 standard or equivalent (see GEN 1.5 para 3.5.2 on page GEN 1.5-2). Carriage of certified GNSS receiver is mandatory.
2. In the event that PBN performance ceases to comply with the requirements for RNP 1 after departure, pilots must notify ATC as soon as possible. ATC assistance would be provided as necessary.
3. Only specific categories of flights (e.g. SAR) as stated in GEN 1.5 para 3.5.2.4 are exempted from the RNP 1 requirement. These flights shall fly the contingency procedures as detailed in AD 2.22 para 2.2.3.5.
4. PRAWN is a **FLY-OVER** waypoint. All other waypoints are fly-by.
5. (DER) - Departure End of Runway.



**PECAN 1B SID RWY 25L**

**RNP 1 Procedure**  
PRAWN[A5000-,K180+;L] - RUMSY[K230;L] - TUNNA[L] - TITAN[R] - PECAN

**CLIMB REQUIREMENT**  
Initial climb to 5 000 ft. Expect further climb when instructed by ATC. Cross PRAWN at 5 000 ft or below.

**TERRAIN CLEARANCE**  
Minimum climb gradient of 3.3% (201 ft/NM).

**SPEED RESTRICTION**  
Speed restriction of 180 KIAS or greater at PRAWN and 230 KIAS until RUMSY.

**PECAN 1D SID RWY 25R**

**RNP 1 Procedure**  
RWY25R(DER)[L] - PRAWN[A5000-,K180+;L] - RUMSY[K230;L] - TUNNA[L] - TITAN[R] - PECAN

**CLIMB REQUIREMENT**  
Initial climb to 5 000 ft. Expect further climb when instructed by ATC. Cross PRAWN at 5 000 ft or below.

**TERRAIN CLEARANCE**  
Minimum climb gradient of 3.3% (201 ft/NM).

**SPEED RESTRICTION**  
Speed restriction of 180 KIAS or greater at PRAWN and 230 KIAS until RUMSY.

CHANGE: Update of text.

**FMC Database Coding Reference for Hong Kong RNAV<sub>(GNSS)</sub> SIDs**

**Designator: PECAN 1B Runway 25L**

<i>Serial Number</i>	<i>Path Descriptor</i>	<i>Waypoint Identifier</i>	<i>Fly-over</i>	<i>Course/Track (°M)</i>	<i>Magnetic Variation</i>	<i>Distance (NM)</i>	<i>Turn Dir</i>	<i>Altitude (ft)</i>	<i>Speed (KIAS)</i>	<i>Navigation Specification</i>
01	CF	PRAWN	Y	253	+2.0	5.0	L	5000-	180+	RNP 1
02	DF	RUMSY	-	-	+2.0	11.1	L	-	230	RNP 1
03	TF	TUNNA	-	155	+2.0	19.6	L	-	-	RNP 1
04	TF	TITAN	-	147	+2.0	8.4	R	-	-	RNP 1
05	TF	PECAN	-	186	+2.0	14.1	-	-	-	RNP 1

**Designator: PECAN 1D Runway 25R**

<i>Serial Number</i>	<i>Path Descriptor</i>	<i>Waypoint Identifier</i>	<i>Fly-over</i>	<i>Course/Track (°M)</i>	<i>Magnetic Variation</i>	<i>Distance (NM)</i>	<i>Turn Dir</i>	<i>Altitude (ft)</i>	<i>Speed (KIAS)</i>	<i>Navigation Specification</i>
01	CF	RW25R (DER)	Y	253	+2.0	-	-	-	-	RNP 1
02	FA	RW25R (DER)	Y	253	+2.0	-	L	430+	-	RNP 1
03	CF	PRAWN	Y	244	+2.0	5.2	L	5000-	180+	RNP 1
04	DF	RUMSY	-	-	+2.0	11.1	L	-	230	RNP 1
05	TF	TUNNA	-	155	+2.0	19.6	L	-	-	RNP 1
06	TF	TITAN	-	147	+2.0	8.4	R	-	-	RNP 1
07	TF	PECAN	-	186	+2.0	14.1	-	-	-	RNP 1

**Waypoint and Coordinates**

<i>Waypoint Identifier</i>	<i>Coordinates (WGS-84)</i>
RW25R (DER)	22 18 34.27N 113 53 37.06E
PRAWN	22 16 05.40N 113 48 40.10E
RUMSY	22 04 56.94N 113 48 16.79E
TUNNA	21 47 25.00N 113 57 54.00E
TITAN	21 40 27.40N 114 03 02.52E
PECAN	21 26 20.19N 114 02 05.64E