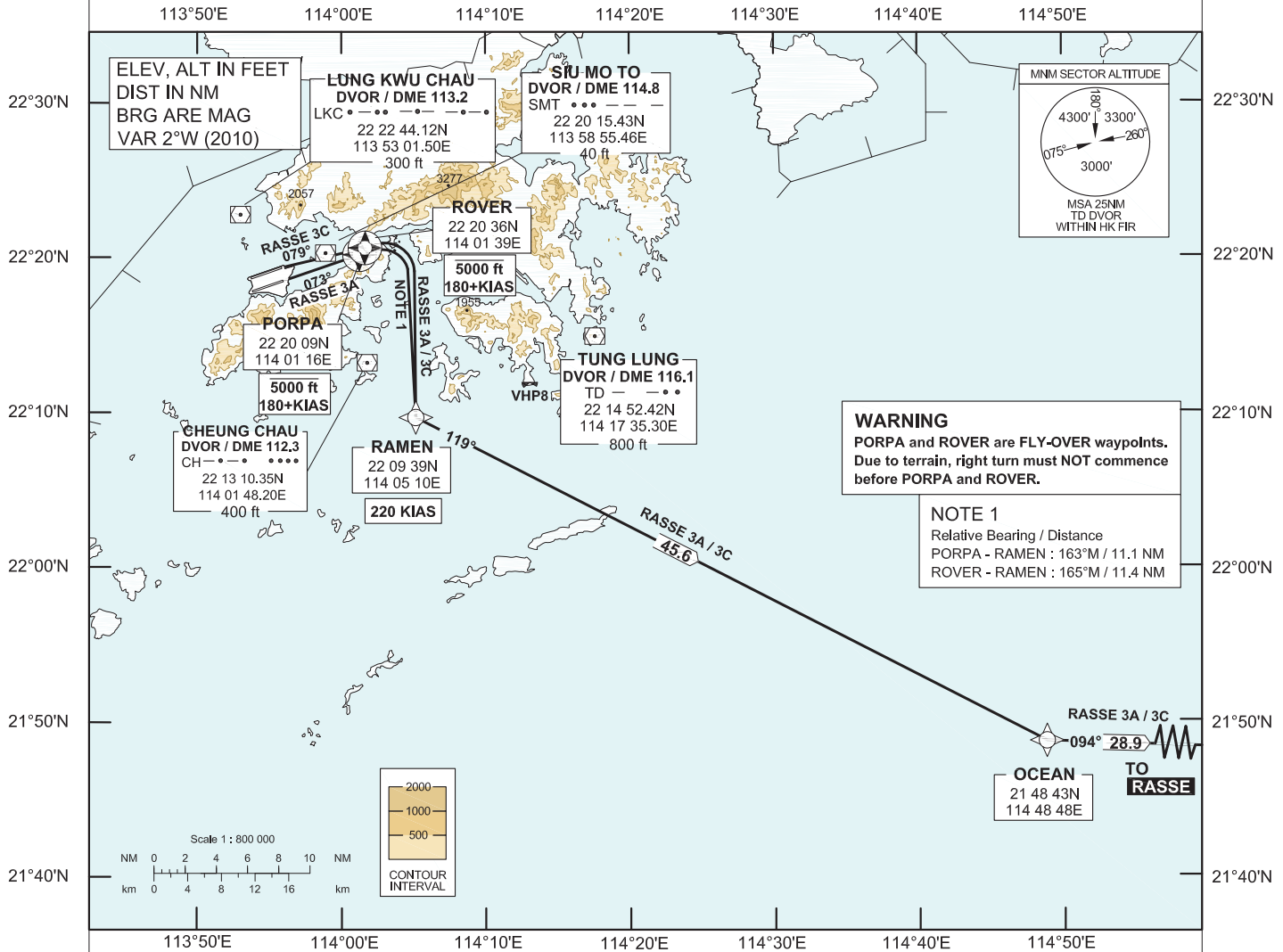


**STANDARD DEPARTURE CHART-  
INSTRUMENT (SID) - ICAO**

Transition Altitude 9 000 ft	
Hong Kong Tower South	118.4
Hong Kong Tower North	118.2
Hong Kong Departure	123.8

**HONG KONG / Intl (VHHH)  
RNAV (GNSS) RASSE 3A SID RWY 07R  
RNAV (GNSS) RASSE 3C SID RWY 07L**

1. For RNAV (GNSS) SID, aircraft must be approved by State of Registry in accordance with ICAO RNP 1 standard or equivalent (see GEN 1.5 para 3.5.2 on page GEN 1.5-2). Carriage of certified GNSS receiver is mandatory.
2. In the event that PBN performance ceases to comply with the requirements for RNP 1 after departure, pilots must notify ATC as soon as possible. ATC assistance would be provided as necessary.
3. Only specific categories of flights (e.g. SAR) as stated in GEN 1.5 para 3.5.2.4 are exempted from the RNP 1 requirement. These flights shall fly the contingency procedures as detailed in AD 2.22 para 2.2.3.5.
4. PORPA and ROVER are **FLY-OVER** waypoints. All other waypoints are fly-by.
5. (DER) - Departure End of Runway.
6. **Noise Mitigating SID for use between 1501 - 2300 UTC (see VHHH AD 2.21 para 2.4 on page AD 2-22).**



RASSE 3A SID RWY 07R	RASSE 3C SID RWY 07L
<p><b>RNP 1 Procedure</b> PORPA[A5000-,K180+;R] - RAMEN[K220;L] - OCEAN[L] - RASSE</p>	<p><b>RNP 1 Procedure</b> RWY07L(DER)[R] - ROVER[A5000-,K180+;R] - RAMEN[K220;L] - OCEAN[L] - RASSE</p>
<p><b>CLIMB REQUIREMENT</b> Initial climb to 5 000 ft. Expect further climb when instructed by ATC. Cross PORPA at 5 000 ft or below.</p>	<p><b>CLIMB REQUIREMENT</b> Initial climb to 5 000 ft. Expect further climb when instructed by ATC. Cross ROVER at 5 000 ft or below.</p>
<p><b>TERRAIN CLEARANCE</b> Minimum climb gradient of 4.9% (298 ft/NM) until leaving 1 400 ft is required.</p>	<p><b>TERRAIN CLEARANCE</b> Minimum climb gradient of 4.1% (250 ft/NM) until leaving 1 400 ft is required.</p>
<p><b>SPEED RESTRICTION</b> Speed restriction of 180 KIAS or greater at PORPA and 220 KIAS until RAMEN.</p>	<p><b>SPEED RESTRICTION</b> Speed restriction of 180 KIAS or greater at ROVER and 220 KIAS until RAMEN.</p>

CHANGE: Update of text.

**FMC Database Coding Reference for Hong Kong RNAV<sub>(GNSS)</sub> SIDs**

**Designator: RASSE 3A Runway 07R (Noise Mitigating Procedure)**

<i>Serial Number</i>	<i>Path Descriptor</i>	<i>Waypoint Identifier</i>	<i>Fly-over</i>	<i>Course/Track (°M)</i>	<i>Magnetic Variation</i>	<i>Distance (NM)</i>	<i>Turn Dir</i>	<i>Altitude (ft)</i>	<i>Speed (KIAS)</i>	<i>Navigation Specification</i>
01	CF	PORPA	Y	073	+2.0	5.0	R	5000-	180+	RNP 1
02	DF	RAMEN	-	-	+2.0	11.1	L	-	220	RNP 1
03	TF	OCEAN	-	119	+2.0	45.6	L	-	-	RNP 1
04	TF	RASSE	-	094	+2.0	28.9	-	-	-	RNP 1

**Designator: RASSE 3C Runway 07L (Noise Mitigating Procedure)**

<i>Serial Number</i>	<i>Path Descriptor</i>	<i>Waypoint Identifier</i>	<i>Fly-over</i>	<i>Course/Track (°M)</i>	<i>Magnetic Variation</i>	<i>Distance (NM)</i>	<i>Turn Dir</i>	<i>Altitude (ft)</i>	<i>Speed (KIAS)</i>	<i>Navigation Specification</i>
01	CF	RW07L (DER)	Y	073	+2.0	-	-	-	-	RNP 1
02	FA	RW07L (DER)	Y	073	+2.0	-	R	430+	-	RNP 1
03	CF	ROVER	Y	079	+2.0	5.3	R	5000-	180+	RNP 1
04	DF	RAMEN	-	-	+2.0	11.4	L	-	220	RNP 1
05	TF	OCEAN	-	119	+2.0	45.6	L	-	-	RNP 1
06	TF	RASSE	-	094	+2.0	28.9	-	-	-	RNP 1

**Waypoint and Coordinates**

<i>Waypoint Identifier</i>	<i>Coordinates (WGS-84)</i>
RWY 07L (DER)	22 19 21.08N 113 56 02.35E
PORPA	22 20 09.10N 114 01 16.30E
ROVER	22 20 35.58N 114 01 39.12E
RAMEN	22 09 39.22N 114 05 09.89E
OCEAN	21 48 43.00N 114 48 48.00E
RASSE	21 47 34.50N 115 19 49.10E