

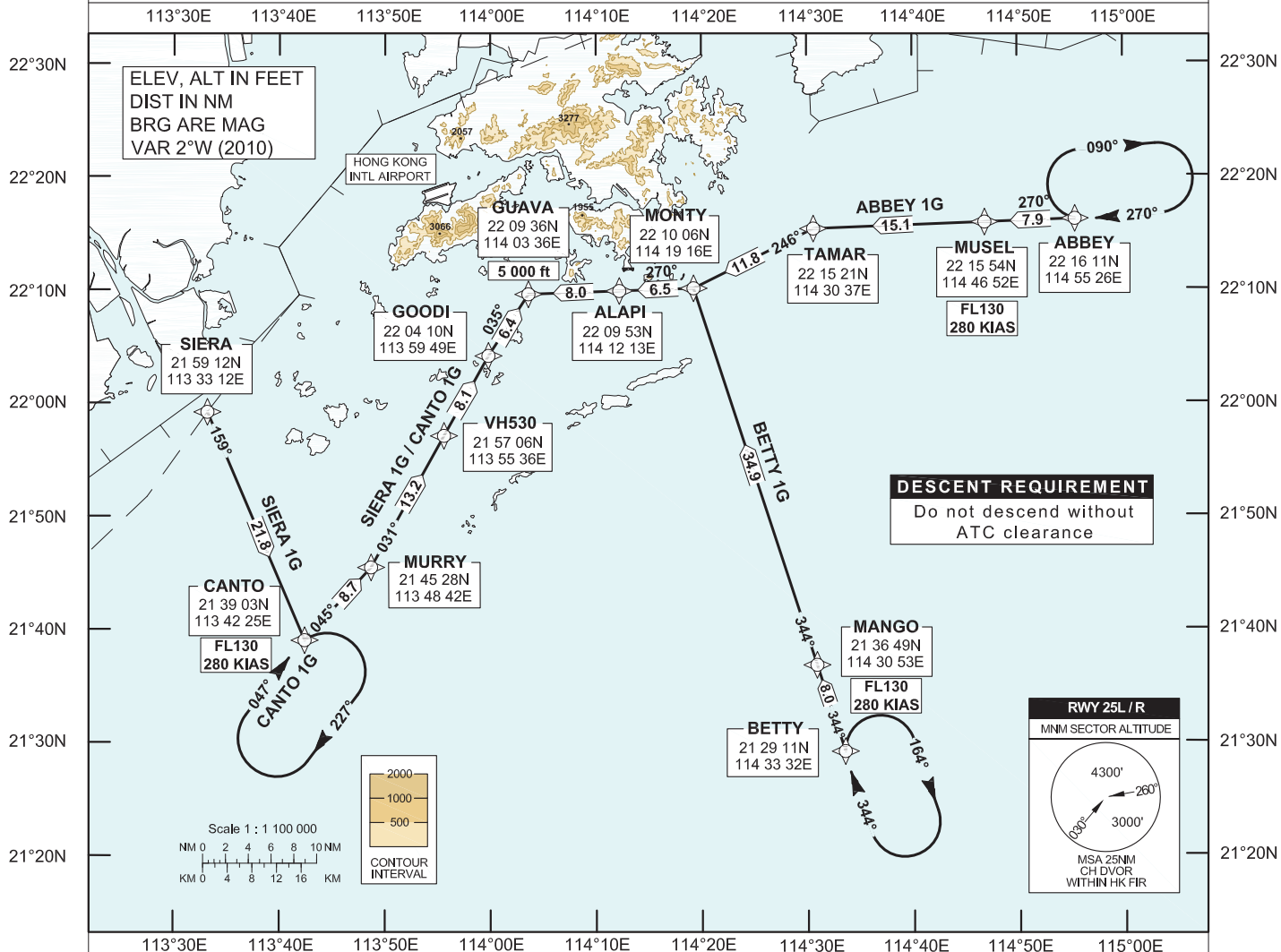
AIP HONG KONG

STANDARD ARRIVAL CHART - INSTRUMENT (STAR) - ICAO

Transition Altitude 9 000 ft
 HONG KONG RADAR 126.3 (BETTY 1G)
 HONG KONG RADAR 126.5 (ABBEY 1G)
 HONG KONG RADAR 127.55 (CANTO 1G / SIERA 1G)

HONG KONG / Intl (VHHH)
 RNAV (GNSS) ABBEY 1G / BETTY 1G STAR
 RNAV (GNSS) CANTO 1G / SIERA 1G STAR
 RWY 25L / 25R

1. For RNAV (GNSS) STAR, aircraft must be approved by State of Registry in accordance with ICAO RNP 1 standard or equivalent (see GEN 1.5 para 3.5.2 on page GEN 1.5-2). Carriage of certified GNSS receiver is mandatory.
2. In the event that PBN performance ceases to comply with the requirements for RNP 1 inflight, pilots must notify ATC as soon as possible. ATC assistance would be provided as necessary.



ABBEY 1G STAR RWY 25L / RWY 25R	BETTY 1G STAR RWY 25L / RWY 25R
<p>RNP 1 Procedure ABBEY - MUSEL[FL130;K280] - TAMAR[L] - MONTY[R] - ALAPI - GUAVA[A050] Expect RNP AR APCH. Descend as directed by ATC.</p>	<p>RNP 1 Procedure BETTY - MANGO[FL130;K280] - MONTY[L] - ALAPI - GUAVA[A050] Expect RNP AR APCH. Descend as directed by ATC.</p>
CANTO 1G STAR RWY 25L / RWY 25R	SIERA 1G STAR RWY 25L / RWY 25R
<p>RNP 1 Procedure CANTO[FL130;K280] - MURRY[L] - VH530 - GOODI[R] - GUAVA[A050] Expect RNP AR APCH. Descend as directed by ATC.</p>	<p>RNP 1 Procedure SIERA - CANTO[FL130;K280;L] - MURRY[L] - VH530 - GOODI[R] - GUAVA[A050] Expect RNP AR APCH. Descend as directed by ATC.</p>

DESCENT REQUIREMENT

Cross GUAVA at 5 000 ft.
ABBEY 1G cross MUSEL at FL 130.
BETTY 1G cross MANGO at FL 130.
CANTO 1G / SIERA 1G cross CANTO at FL 130.
DO NOT DESCEND WITHOUT ATC CLEARANCE.

SPEED CONTROL

Aircraft shall fly at 280 KIAS by MUSEL / MANGO / CANTO, or as directed by ATC .

HOLDING

The holding pattern is established at ABBEY / BETTY / CANTO. If holding is required, each flight will be instructed individually.

ALTERNATIVE HOLDING

In order to provide traffic management flexibility during peak periods of arrival or adverse weather situation in Hong Kong TMA, traffic may be instructed to hold at BAKER or other terminal holding (see ENR 3.6) as directed by ATC.

LOSS OF COMMUNICATION

In the event of a loss of communication aircraft shall comply with the descent requirement and the STAR track above. Thence: Maintain FL 130 to GUAVA. Join GUAVA holding pattern and descend to 5 000 ft in the hold, then carry out the appropriate RNP AR APCH.

CHANGE: Update of text, abbreviated description.

FMC Database Coding Reference for Hong Kong RNAV_(GNSS) STARs

Designator: ABBEY 1G Runway 25L / Runway 25R

Serial Number	Path Descriptor	Waypoint Identifier	Fly-over	Course/Track (°M)	Magnetic Variation	Distance (NM)	Turn Dir	Altitude (ft)	Speed (KIAS)	Navigation Specification
01	IF	ABBEY	-	-	+2.0	-	-	-	-	RNP 1
02	TF	MUSEL	-	270	+2.0	7.9	-	FL130	280	RNP 1
03	TF	TAMAR	-	270	+2.0	15.1	L	-	-	RNP 1
04	TF	MONTY	-	246	+2.0	11.8	R	-	-	RNP 1
05	TF	ALAPI	-	270	+2.0	6.5	-	-	-	RNP 1
06	TF	GUAVA	-	270	+2.0	8.0	-	5000	-	RNP 1

Designator: BETTY 1G Runway 25L / Runway 25R

Serial Number	Path Descriptor	Waypoint Identifier	Fly-over	Course/Track (°M)	Magnetic Variation	Distance (NM)	Turn Dir	Altitude (ft)	Speed (KIAS)	Navigation Specification
01	IF	BETTY	-	-	+2.0	-	-	-	-	RNP 1
02	TF	MANGO	-	344	+2.0	8.0	-	FL130	280	RNP 1
03	TF	MONTY	-	344	+2.0	34.9	L	-	-	RNP 1
04	TF	ALAPI	-	270	+2.0	6.5	-	-	-	RNP 1
05	TF	GUAVA	-	270	+2.0	8.0	-	5000	-	RNP 1

Designator: CANTO 1G Runway 25L / Runway 25R

Serial Number	Path Descriptor	Waypoint Identifier	Fly-over	Course/Track (°M)	Magnetic Variation	Distance (NM)	Turn Dir	Altitude (ft)	Speed (KIAS)	Navigation Specification
01	IF	CANTO	-	-	+2.0	-	-	FL130	280	RNP 1
02	TF	MURRY	-	045	+2.0	8.7	L	-	-	RNP 1
03	TF	VH530	-	031	+2.0	13.2	-	-	-	RNP 1
04	TF	GOODI	-	031	+2.0	8.1	R	-	-	RNP 1
05	TF	GUAVA	-	035	+2.0	6.4	-	5000	-	RNP 1

Designator: SIERA 1G Runway 25L / Runway 25R

Serial Number	Path Descriptor	Waypoint Identifier	Fly-over	Course/Track (°M)	Magnetic Variation	Distance (NM)	Turn Dir	Altitude (ft)	Speed (KIAS)	Navigation Specification
01	IF	SIERA	-	-	+2.0	-	-	-	-	RNP 1
02	TF	CANTO	-	159	+2.0	21.8	L	FL130	280	RNP 1
03	TF	MURRY	-	045	+2.0	8.7	L	-	-	RNP 1
04	TF	VH530	-	031	+2.0	13.2	-	-	-	RNP 1
05	TF	GOODI	-	031	+2.0	8.1	R	-	-	RNP 1
06	TF	GUAVA	-	035	+2.0	6.4	-	5000	-	RNP 1

Waypoint Coordinates

Waypoint Identifier	Coordinates (WGS-84)
ABBEY	22 16 11.00N 114 55 25.92E
ALAPI	22 09 52.88N 114 12 13.09E
BETTY	21 29 10.82N 114 33 31.92E
CANTO	21 39 02.63N 113 42 25.09E
GOODI	22 04 09.88N 113 59 48.59E
GUAVA	22 09 36.10N 114 03 36.30E
MANGO	21 36 49.00N 114 30 53.00E

Waypoint Identifier	Coordinates (WGS-84)
MONTY	22 10 06.26N 114 19 15.68E
MURRY	21 45 28.37N 113 48 41.97E
MUSEL	22 15 53.99N 114 46 52.13E
SIERA	21 59 12.00N 113 33 12.00E
TAMAR	22 15 21.00N 114 30 37.00E
VH530	21 57 05.86N 113 55 36.22E
-	-