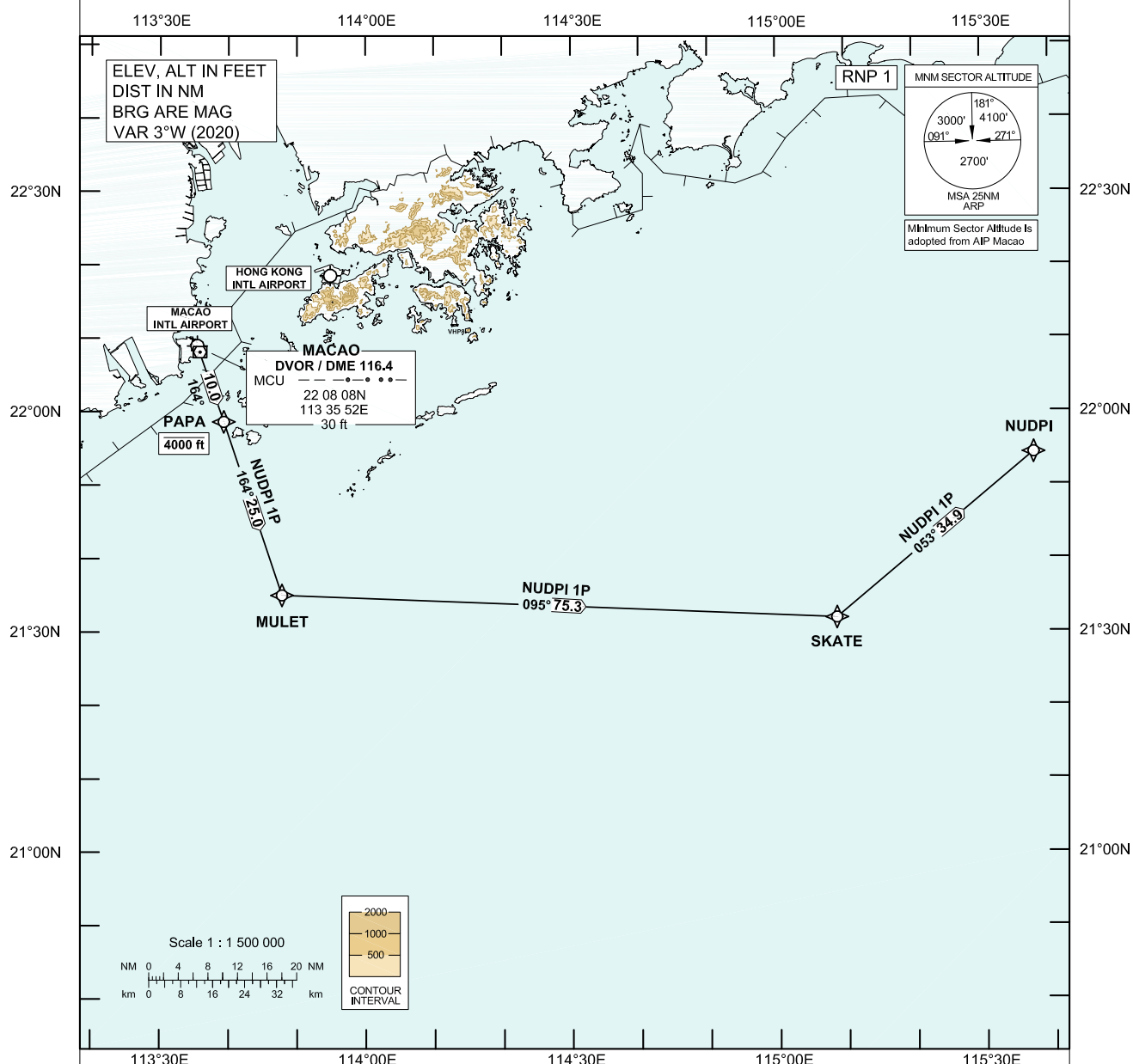


**STANDARD DEPARTURE CHART-
INSTRUMENT (SID) - ICAO**Transition Altitude 9 000 ft
HONG KONG RADAR 123.95**MACAO / Intl (VMC)
RWY 16
RNAV (GNSS) NUDPI 1P SID**

1. Aircraft shall comply with the Macao RWY 16 SID procedure as published in the AIP Macao.
2. For RNAV (GNSS) SID, aircraft must be approved by State of Registry in accordance with ICAO RNP 1 standard or equivalent. Carriage of certified GNSS receiver is mandatory.
3. Aircraft that do not have approval or whose RNP 1 capability has been degraded shall use the Conventional Procedure described below.

**NUDPI 1P SID RWY 16****RNP 1 Procedure**

(Mandate procedure available to aircraft appropriately equipped and approved)

PAPA - MULET - SKATE - NUDPI

Conventional Procedure

Continue outbound on MCU RDL 164 to PAPA then MULET. From MULET turn left direct to SKATE then turn left direct to NUDPI.

If MCU DVOR is not available

Continue tracking 164°M to MULET, then continue on the track above.

CLIMB REQUIREMENT

Climb to 4 000 ft. Expect further climb when instructed by ATC.

SPEED RESTRICTION

Aircraft shall fly at 250 KIAS or less below FL 110.

CHANGE: New procedure.

AD 2-VMC-SID-NUDPI-P_V01_240531km

FMC Database Coding Reference for Macao RNAV_(GNSS) SID**TABULAR DESCRIPTION: NUDPI 1P Runway 16**

Serial Number	Path Descriptor	Waypoint Identifier	Fly-over	Course °M (°T)	Magnetic Variation	Distance (NM)	Turn Direction	Altitude (ft)	Speed (KIAS)	Navigation Specification
Aircraft shall comply with the Macao RWY34 SID procedure as published in the AIP Macao										
01	CF	PAPA	-	164 (161)	+3.0	10.0	-	-4000	-250	RNP 1
02	TF	MULET	-	164 (161)	+3.0	25.0	-	-	-	RNP 1
03	TF	SKATE	-	095 (092)	+3.0	75.3	-	-	-	RNP 1
04	TF	NUDPI	-	053 (050)	+3.0	34.9	-	-	-	RNP 1

WAYPOINT LIST

NUDPI 1P RWY 16		
Waypoint Identifier	Coordinates (WGS-84)	
PAPA	21 58 39N	113 39 22E
MULET	21 35 01.95N	113 47 51.87E
SKATE	21 31 54.99N	115 08 39.94E
NUDPI	21 54 18.90N	115 37 28.21E