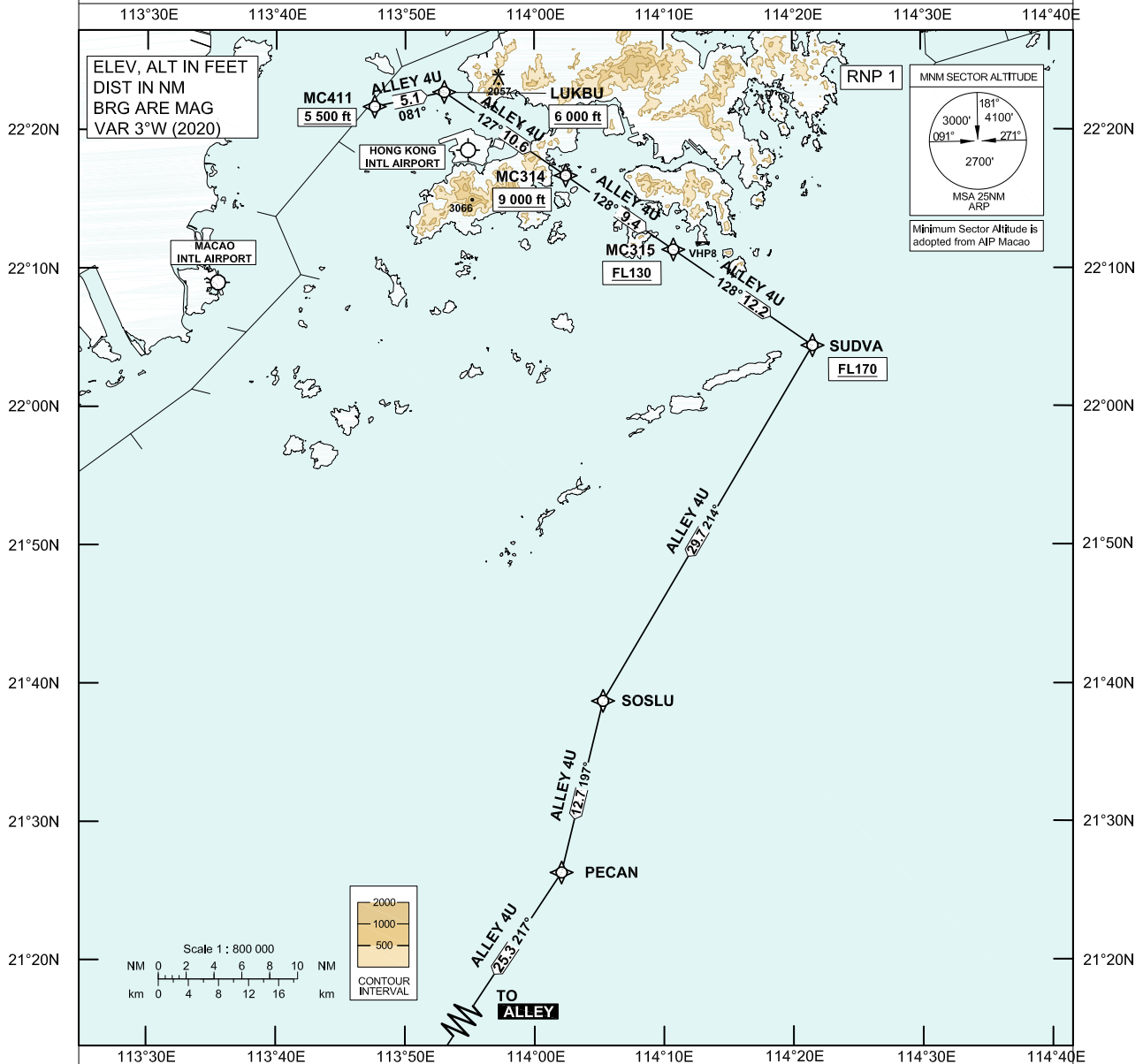


**STANDARD DEPARTURE CHART-
INSTRUMENT (SID) - ICAO**Transition Altitude 9 000 ft
HONG KONG DEPARTURE 122.0**MACAO / Intl (VMC)
RWY 34
RNAV (GNSS) ALLEY 4U SID**

1. Aircraft shall comply with the Macao RWY 34 SID procedure as published in the AIP Macao.
2. For RNAV (GNSS) SID, aircraft must be approved by State of Registry in accordance with ICAO RNP 1 standard or equivalent. Carriage of certified GNSS receiver is mandatory.
3. Aircraft that do not have approval or whose RNP 1 capability has been degraded shall use the Conventional Procedure described below.

**ALLEY 4U SID RWY 34****RNP 1 Procedure**(Mandate procedure available to aircraft appropriately equipped and approved)
MC411 - LUKBU - MC314 - MC315 - SUDVA - SOSLU - PECAN - ALLEY**Conventional Procedure**

Departures shall enter Hong Kong airspace via MC411.

From MC411 direct to LUKBU, then to MC314, MC315, SUDVA, SOSLU, PECAN and ALLEY.

CLIMB REQUIREMENTCross MC411 at or above 5 500 ft climbing to 6 000 ft. Cross LUKBU at 6 000 ft or above.
Expect further climb when instructed by ATC.**SPEED RESTRICTION**

Aircraft shall fly at 250 KIAS or less below FL 110.

CHANGE: Revised procedure; revised frequency.

FMC Database Coding Reference for Macao RNAV_(GNSS) SID

TABULAR DESCRIPTION: ALLEY 4U Runway 34

Serial Number	Path Descriptor	Waypoint Identifier	Fly-over	Course °M (°T)	Magnetic Variation	Distance (NM)	Turn Direction	Altitude (ft)	Speed (KIAS)	Navigation Specification
Aircraft shall comply with the Macao RWY34 SID procedure as published in the AIP Macao										
01	TF	MC411	-	-	+3.0	-	-	+5500	-250	RNP 1
02	TF	LUKBU	-	081 (078)	+3.0	5.1	-	+6000	-	RNP 1
03	TF	MC314	-	127 (124)	+3.0	10.6	-	+9000	-	RNP 1
04	TF	MC315	-	128 (125)	+3.0	9.4	-	+FL130	-	RNP 1
05	TF	SUDVA	-	128 (125)	+3.0	12.2	-	+FL170	-	RNP 1
06	TF	SOSLU	-	214 (211)	+3.0	29.7	-	-	-	RNP 1
07	TF	PECAN	-	197 (194)	+3.0	12.7	-	-	-	RNP 1
08	TF	ALLEY	-	217 (214)	+3.0	25.3	-	-	-	RNP 1

WAYPOINT LIST

ALLEY 4U RWY 34		
Waypoint Identifier	Coordinates (WGS-84)	
MC411	22 21 41.20N	113 47 37.58E
LUKBU	22 22 44.12N	113 53 01.50E
MC314	22 16 42.35N	114 02 26.88E
MC315	22 11 21.09N	114 10 47.55E
SUDVA	22 04 25.14N	114 21 33.87E
SOSLU	21 38 44.03N	114 05 18.39E
PECAN	21 26 20.19N	114 02 05.64E
ALLEY	21 05 11.15N	113 47 09.50E