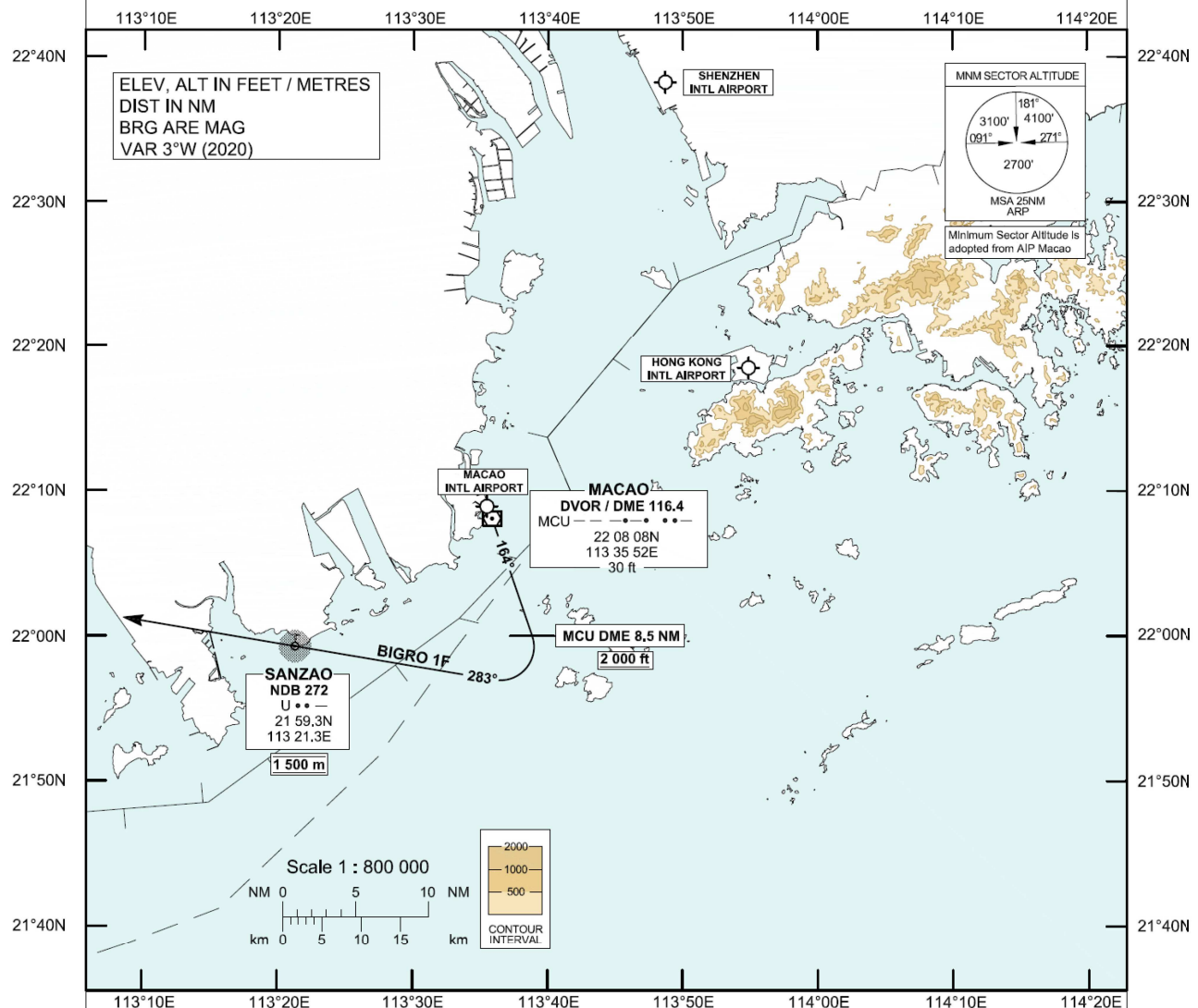


**STANDARD DEPARTURE CHART-
INSTRUMENT (SID) - ICAO**Transition Altitude 9 000 ft
HONG KONG RADAR 123.95**MACAO / Intl (VMC)
RWY 16
BIGRO 1F SID**

Aircraft shall comply with the Macao RWY 16 SID procedure as published in the AIP Macao.

**BIGRO 1F SID RWY 16**

Continue outbound on MCU RDL 164 to MCU DME 8.5 NM then turn right to track direct to U NDB (nominal track 283°M). Continue in accordance with the SID procedure as published in the AIP Macao.

If MCU DVOR is not available

Climb straight ahead to 1 500 m and cross ZAO DME 14.8 NM at 2 000 ft (610 m) or above, then turn right on track 283°M. Continue in accordance with the SID procedure as published in AIP Macao.

CLIMB INSTRUCTIONS

Cross MCU RDL 164 / DME 8.5 NM at or above 2 000 ft (610 m) climbing to 1 500 m.

Cross U NDB at 1 500 m. Expect further climb in accordance with procedure published in the AIP Macao.

This procedure requires a minimum climb gradient of 3.8% until reaching 1 500 m.**SPEED CONTROL**

Maximum departure turning speed: 205 KIAS.

CHANGE: Update of MSA.