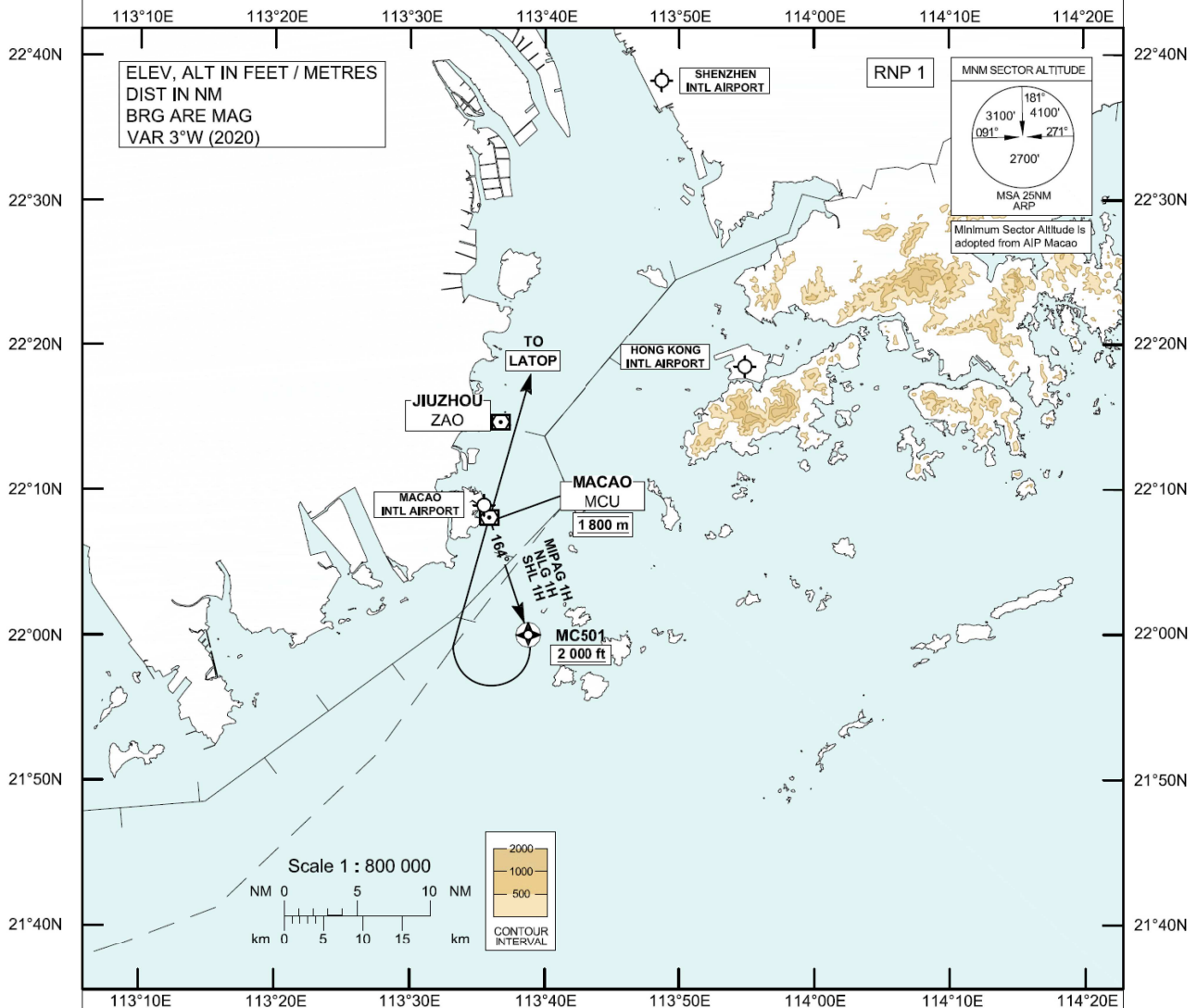


**STANDARD DEPARTURE CHART-  
INSTRUMENT (SID) - ICAO**Transition Altitude 9 000 ft  
HONG KONG RADAR 123.95**MACAO / Intl (VMMC)  
RWY 16  
RNAV (GNSS) MIPAG 1H SID  
RNAV (GNSS) NLG 1H SID  
RNAV (GNSS) SHL 1H SID**

Aircraft shall comply with the Macao RWY 16 SID procedure as published in the AIP Macao.

**MIPAG 1H / NLG 1H / SHL 1H SID RWY 16****Basic-RNP 1 Procedure**

(Mandate procedure available to aircraft appropriately equipped and approved)

**MC501 - MCU - LATOP**

Continue in accordance with the SID procedure as published in the AIP Macao.

**CLIMB REQUIREMENT**

Cross MC501 at or above 2 000 ft (610 m), climbing to 1 800 m.

Cross MCU DVOR at 1 800 m. Expect further climb in accordance with procedure published in the AIP Macao.

**These procedures require a minimum climb gradient of 3.8% until reaching 2 400 m for NLG 1H and leaving 2 400 m for MIPAG 1H and SHL 1H.****SPEED CONTROL**

Maximum departure turning speed: 205 KIAS.

CHANGE: Update of MSA.

## FMC Database Coding Reference for Macao RNAV<sub>(GNSS)</sub> SIDs

Designator: NLG 1H RWY 16

Serial Number	Path Descriptor	Waypoint Identifier	Fly-over	Course /Track °M (°T)	Magnetic Variation	Distance (NM)	Turn Direction	Altitude (ft)	Speed (KIAS)	Navigation Specification
Aircraft shall comply with the Macao RWY 16 SID procedure as published in the AIP Macao										
	CF	MC501	Y	163 (160)	+3.0	-	-	+2000	-205	RNP 1
	DF	MCU	-	-	+3.0	-	R	@1800M	-205	RNP 1

Designator: SHL 1H RWY 16

Serial Number	Path Descriptor	Waypoint Identifier	Fly-over	Course /Track °M (°T)	Magnetic Variation	Distance (NM)	Turn Direction	Altitude (ft)	Speed (KIAS)	Navigation Specification
Aircraft shall comply with the Macao RWY 16 SID procedure as published in the AIP Macao										
	CF	MC501	Y	163 (160)	+3.0	-	-	+2000	-205	RNP 1
	DF	MCU	-	-	+3.0	-	R	@1800M	-205	RNP 1

Designator: MIPAG 1H RWY 16

Serial Number	Path Descriptor	Waypoint Identifier	Fly-over	Course /Track °M (°T)	Magnetic Variation	Distance (NM)	Turn Direction	Altitude (ft)	Speed (KIAS)	Navigation Specification
Aircraft shall comply with the Macao RWY 16 SID procedure as published in the AIP Macao										
	CF	MC501	Y	163 (160)	+3.0	-	-	+2000	-205	RNP 1
	DF	MCU	-	-	+3.0	-	R	@1800M	-205	RNP 1

## WAYPOINT LIST

NLG 1H/SHL 1H/MIPAG 1H RWY 16	
Waypoint Identifier	Coordinates (WGS84)
MC501	22 00 03.00 N 113 38 45.76 E
MCU	22 08 08 N 113 35 52 E