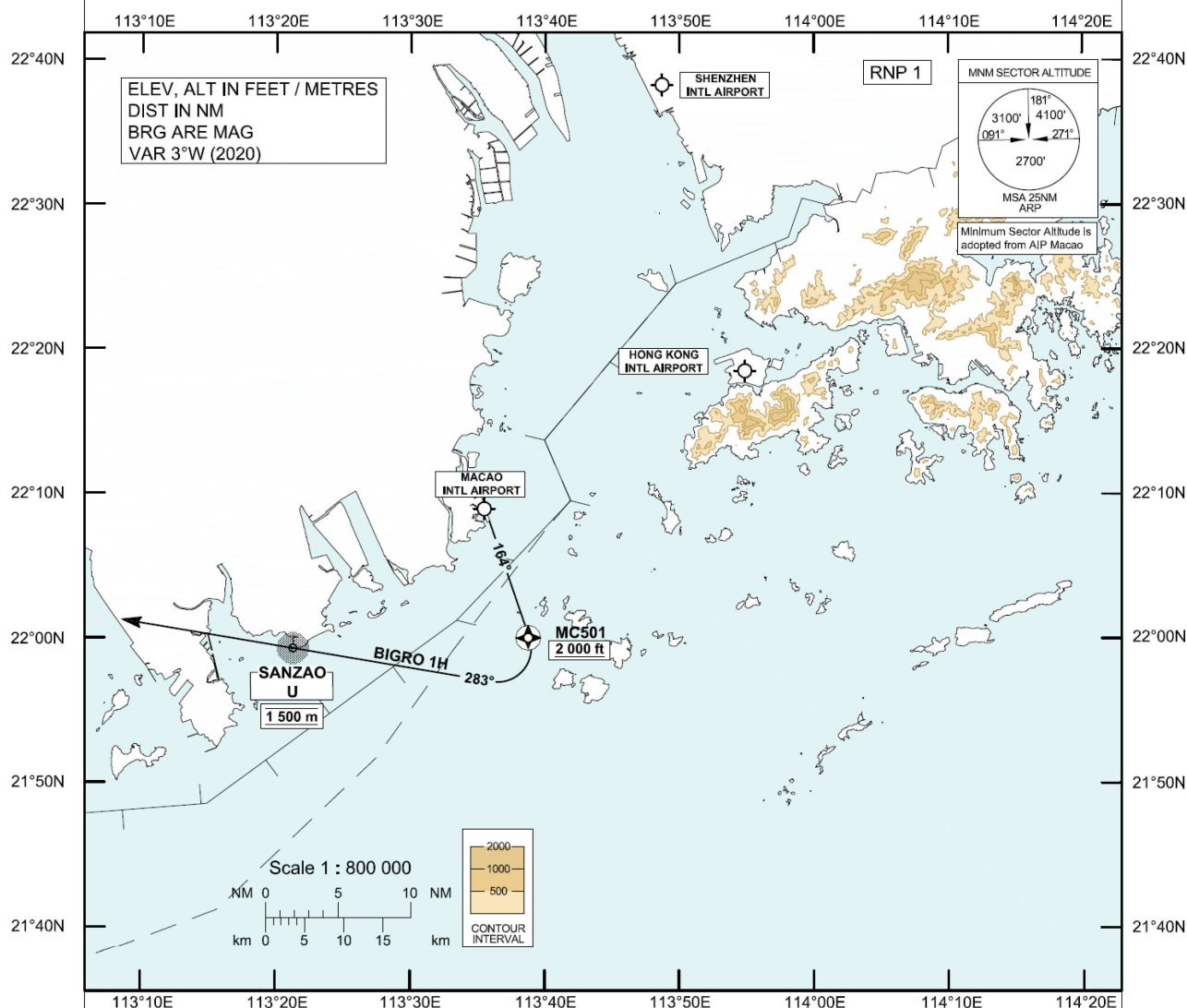


**STANDARD DEPARTURE CHART-  
INSTRUMENT (SID) - ICAO**Transition Altitude 9 000 ft  
HONG KONG RADAR 123.95**MACAO / Intl (VMC)  
RWY 16  
RNAV (GNSS) BIGRO 1H SID**

1. For use when MCU DVOR is not available.
2. Aircraft shall comply with the Macao RWY 16 SID procedure as published in the AIP Macao.

**BIGRO 1H SID RWY 16****RNP 1 Procedure****MC501 - U**

Continue in accordance with the SID procedure as published in the AIP Macao.

**CLIMB REQUIREMENT**

Cross MC501 at or above 2 000 ft (610 m).

Cross U NDB at 1 500 m. Expect further climb in accordance with procedure published in the AIP Macao.

**This procedure requires a minimum climb gradient of 3.8% until reaching 1 500 m.**

**SPEED CONTROL**

Maximum departure turning speed: 205 KIAS

CHANGE: Update of MSA.

**FMC Database Coding Reference for Macao RNAV<sub>(GNSS)</sub> SIDs****Designator: BIGRO 1H RWY 16**

Serial Number	Path Descriptor	Waypoint Identifier	Fly-over	Course /Track °M (°T)	Magnetic Variation	Distance (NM)	Turn Direction	Altitude (ft)	Speed (KIAS)	Navigation Specification
<b>Aircraft shall comply with the Macao RWY 16 SID procedure as published in the AIP Macao</b>										
	CF	MC501	Y	163 (160)	+3.0	-	-	+2000	-205	RNP 1
	CF	U	-	-	+3.0	-	R	@1500M	-205	RNP 1

**WAYPOINT LIST**

<b>BIGRO 1H RWY 16</b>		
Waypoint Identifier	Coordinates (WGS84)	
MC501	22 00 03.00 N	113 38 45.76 E
U	21 59.3 N	113 21.3 E