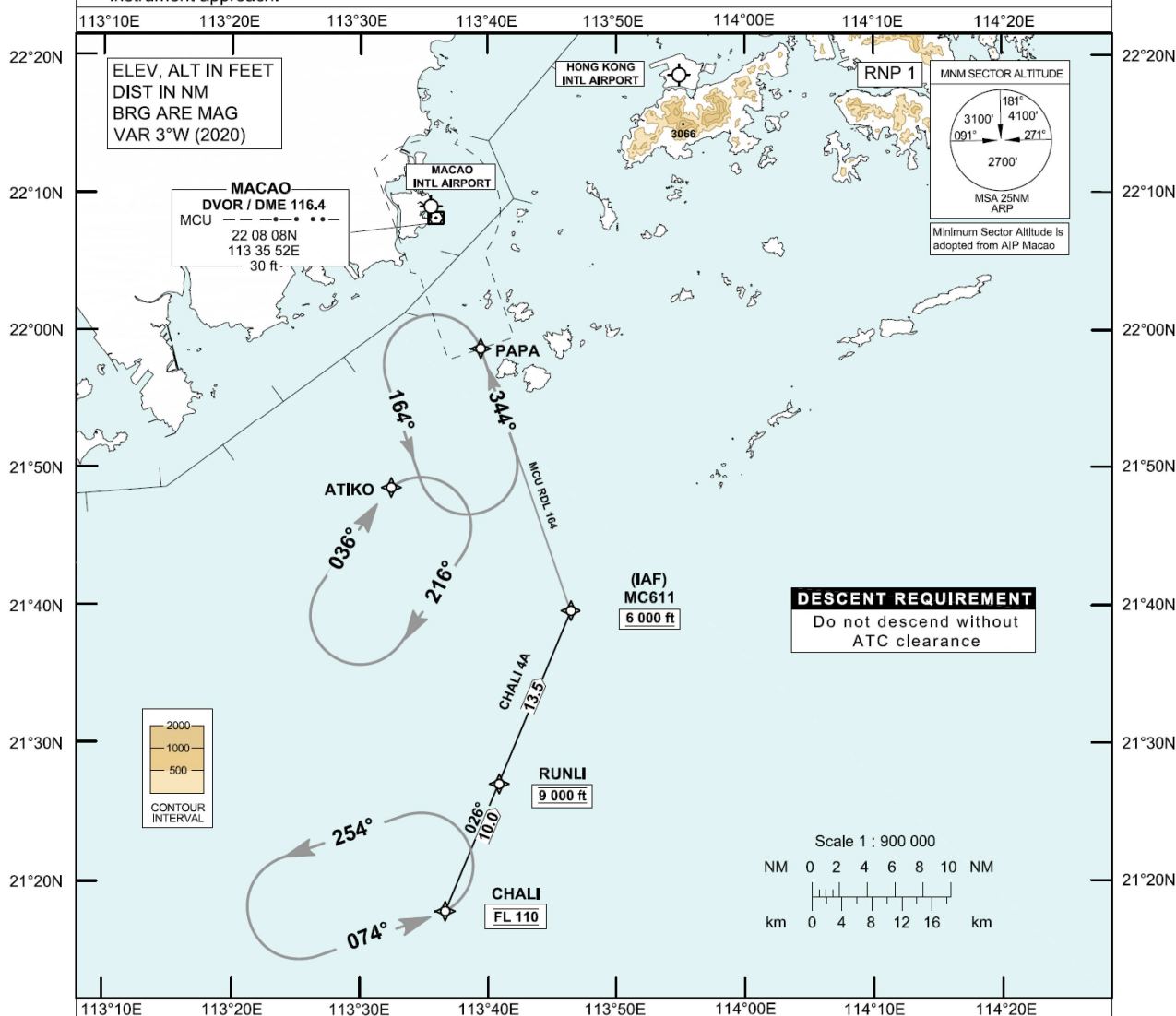


**STANDARD ARRIVAL CHART-  
INSTRUMENT (STAR) - ICAO**Transition Altitude 9 000 ft  
HONG KONG RADAR 123.95**MACAO / Intl (VMMC)  
RWY 34  
RNAV (GNSS) CHALI 4A STAR**

1. For RNAV (GNSS) STAR, aircraft must be approved by State of Registry in accordance with ICAO RNP 1 standard or equivalent. Carriage of certified GNSS receiver is mandatory.
2. Aircraft that do not have approval or whose RNP 1 capability has been degraded shall request ATC assistance for Macao instrument approach.

**RNP 1 Procedure**

(Mandate procedure available to aircraft appropriately equipped and approved)

CHALI - RUNLI - MC611

Expect ILS approach to RWY 34.

Descend as directed by ATC.

**DESCENT REQUIREMENT**

Cross CHALI at FL 110, RUNLI at 9 000 ft, MC611 at 6 000 ft or above.

**DO NOT DESCEND WITHOUT ATC CLEARANCE.****SPEED CONTROL**

Speed control shall be in force unless otherwise advised. Aircraft on STAR clearance shall fly at 250 KIAS or less whilst below FL 110.

**HOLDING**

The holding patterns for CHALI STAR are established at CHALI, PAPA and ATIKO. In the event of holding, each flight will be instructed individually.

In order to provide traffic management flexibility, traffic may be instructed to hold at other terminal holdings (see ENR 3.6) as directed by ATC.

**LOSS OF COMMUNICATION**

In the event of a loss of communication aircraft shall comply with the descent requirement and STAR track above, and carry out the appropriate approach procedure to RWY 34.

CHANGE: Update of MSA.

AD 2-VMMC-STAR-CHALI-A\_V07\_231213in

## FMC Database Coding Reference for Macao RNAV<sub>(GNSS)</sub> STARs

### Designator: CHALI 4A Runway 34

| <i>Serial Number</i> | <i>Path Descriptor</i> | <i>Waypoint Identifier</i> | <i>Fly-over</i> | <i>Track (°M)</i> | <i>Magnetic Variation</i> | <i>Distance (NM)</i> | <i>Turn Dir</i> | <i>Altitude (ft)</i> | <i>Speed (IAS)</i> | <i>Navigation Specification</i> |
|----------------------|------------------------|----------------------------|-----------------|-------------------|---------------------------|----------------------|-----------------|----------------------|--------------------|---------------------------------|
| 01                   | IF                     | CHALI                      | -               | -                 | +3.0                      | -                    | -               | @FL110               | -                  | RNP 1                           |
| 02                   | TF                     | RUNLI                      | -               | 026               | +3.0                      | 10                   | -               | @9000                | -                  | RNP 1                           |
| 03                   | TF                     | MC611                      | -               | 026               | +3.0                      | 13.5                 | -               | +6000                | -                  | RNP 1                           |

### Waypoint Coordinates

| <b>Waypoint Name</b> | <b>Coordinates (WG584)</b>    |
|----------------------|-------------------------------|
| CHALI                | 21 17 45.00N<br>113 36 41.00E |
| RUNLI                | 21 26 59.72N<br>113 40 51.00E |
| MC611                | 21 39 36.00N<br>113 46 30.00E |