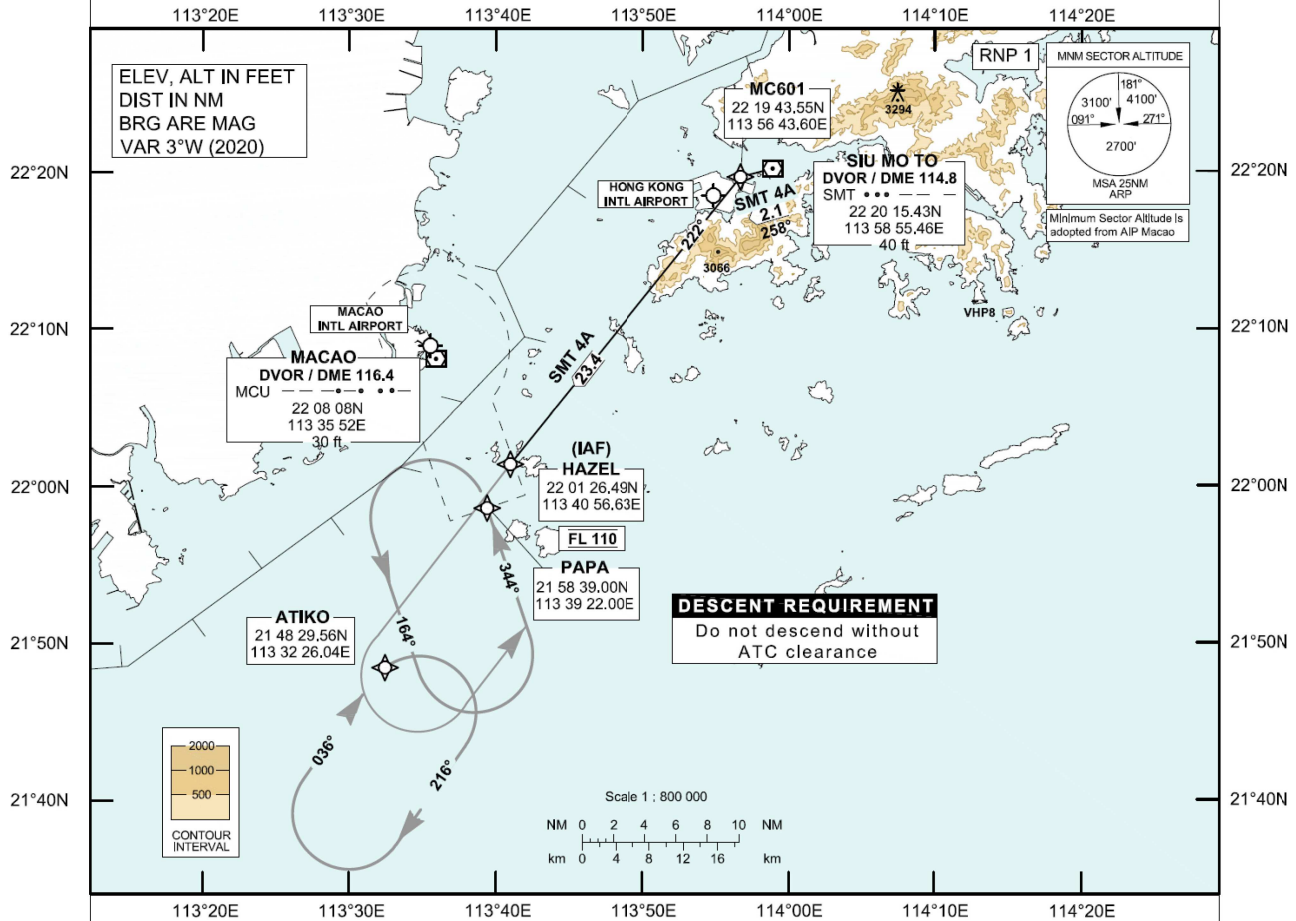


**STANDARD ARRIVAL CHART-  
INSTRUMENT (STAR) - ICAO**Transition Altitude 9 000 ft  
HONG KONG DEPARTURE 122.0**MACAO / Intl (VMC)  
RWY 34  
RNAV (GNSS) SMT 4A STAR**

1. For RNAV (GNSS) STAR, aircraft must be approved by State of Registry in accordance with ICAO RNP 1 standard or equivalent. Carriage of certified GNSS receiver is mandatory.
2. Aircraft that do not have approval or whose RNP 1 capability has been degraded shall use the Conventional Procedure described below.

**SMT 4A STAR RWY 34****RNP 1 Procedure**

(Mandate procedure available to aircraft appropriately equipped and approved)

SMT - MC601 - HAZEL

Expect ILS approach.

Descend as directed by ATC.

**Conventional Procedure**

Leave SMT DVOR on RDL 258. At SMT DME 2.1 NM turn left track direct to HAZEL.

Expect ILS approach.

Descend as directed by ATC.

**DESCENT REQUIREMENT**Cross HAZEL at FL 110. **DO NOT DESCEND WITHOUT ATC CLEARANCE.****SPEED CONTROL**

Speed control shall be in force unless otherwise advised. Aircraft on STAR clearance shall fly at 250 KIAS or less whilst below FL 110.

**HOLDING**

The holding patterns for SMT STAR are established at BUMDI, PAPA and ATIKO. In the event of holding, each flight will be instructed individually.

In order to provide traffic management flexibility, traffic may be instructed to hold at other terminal holdings (see ENR 3.6) as directed by ATC.

**LOSS OF COMMUNICATION**

In the event of a loss of communication, aircraft shall comply with the descent requirement and STAR track above, and carry out the appropriate approach procedure to RWY 34.

CHANGE: Update of MSA.

**FMC Database Coding Reference for Macao RNAV<sub>(GNSS)</sub> STARs****Designator: SMT 4A Runway 34**

<i>Serial Number</i>	<i>Path Descriptor</i>	<i>Waypoint Identifier</i>	<i>Fly-over</i>	<i>Track (°M)</i>	<i>Magnetic Variation</i>	<i>Distance (NM)</i>	<i>Turn Dir</i>	<i>Altitude (ft)</i>	<i>Speed (IAS)</i>	<i>Navigation Specification</i>
01	IF	SMT	-	-	+3.0	-	-	-	-	RNP 1
02	TF	MC601	-	255	+3.0	2.0	-	-	-	RNP 1
03	TF	HAZEL	-	222	+3.0	23.4	L	@FL110	-	RNP 1

**Waypoint Coordinates**

<b>Waypoint Name</b>	<b>Coordinates (WG584)</b>
SMT	22 20 15.43N 113 58 55.46E
MC601	22 19 43.55N 113 56 43.60E
HAZEL	22 01 26.49N 113 40 56.63E