

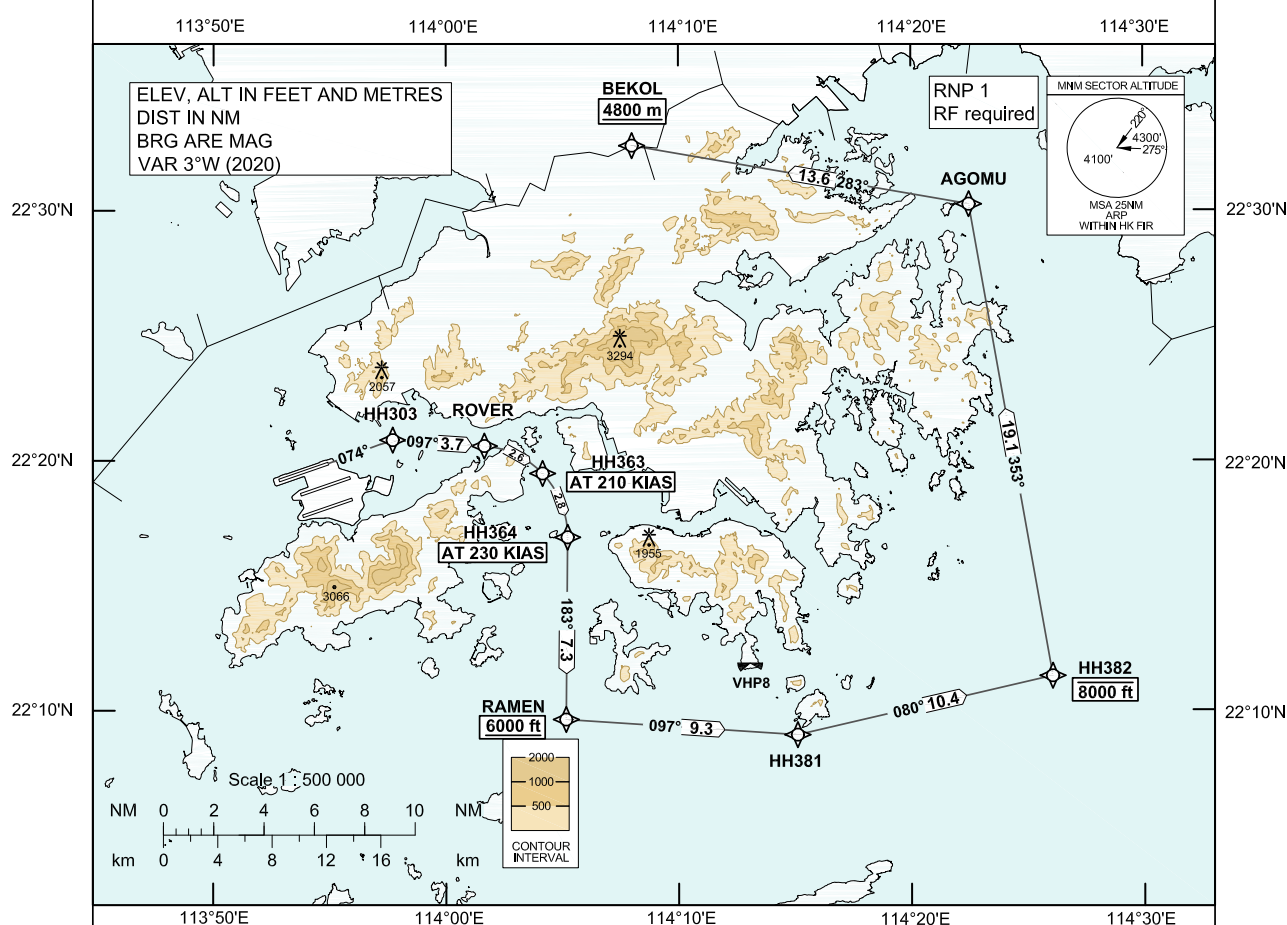
**STANDARD DEPARTURE CHART-  
INSTRUMENT (SID) - ICAO**

Transition Altitude 9 000 ft

Hong Kong Tower	118.7
Hong Kong Departure	123.8

**HONG KONG / Intl (VHHH)  
RNAV (GNSS) BEKOL 1Z SID RWY 07L**

1. In the event that PBN performance ceases to comply with the requirements for RNP 1 after departure, pilots must notify ATC as soon as possible. ATC assistance would be provided as necessary.
2. Only specific categories of flights (e.g. SAR) as stated in GEN 1.5 para 3.5.3.5 are exempted from the RNP 1 requirement. These flights shall fly the contingency procedures as detailed in VHHH AD 2.22 para 2.2.3.5.
3. **Radius-to-fix (RF) leg is required.** Aircraft shall have RF capability as stipulated in the Aircraft Flight Manual or its FMS manual. For aircraft without RF capability, pilot shall request the corresponding non-RF SID procedure from Hong Kong Delivery.

**BEKOL 1Z SID RWY 07L****CLIMB REQUIREMENT**

Initial climb to 5 000 ft. Expect further climb when instructed by ATC. Comply with all the published altitude restrictions. If unable to comply with the vertical profile, pilot shall inform ATC prior to start-up.

**TERRAIN CLEARANCE**

Minimum climb gradient of 3.3% (201 ft/NM).

**SPEED RESTRICTION**

Speed restriction of 210 KIAS at HH363 and 230 KIAS at HH364.

CHANGE: New procedure.

**FMC Database Coding Reference for Hong Kong RNAV<sub>(GNSS)</sub> SID****TABULAR DESCRIPTION: BEKOL 1Z RWY 07L**

Serial Number	Path Descriptor	Waypoint Identifier	Fly-over	Course °M (°T)	Magnetic Variation	Distance (NM)	Turn Direction	Altitude (ft)	Speed (KIAS)	Navigation Specification
01	CF	HH303	-	074 (071)	+3.0	-	-	-	-	RNP 1
02	TF	ROVER	-	097 (094)	+3.0	3.7	-	-	-	RNP 1
03	RF Centre: HH963 r=3.507 NM	HH363	-	-	+3.0	2.6	R	-	@210	RNP 1
04	RF Centre: HH964 r=3.665 NM	HH364	-	-	+3.0	2.8	R	-	@230	RNP 1
05	TF	RAMEN	-	183 (180)	+3.0	7.3	-	+6000	-	RNP 1
06	TF	HH381	-	097 (094)	+3.0	9.3	-	-	-	RNP 1
07	TF	HH382	-	080 (077)	+3.0	10.4	-	-8000	-	RNP 1
08	TF	AGOMU	-	353 (350)	+3.0	19.1	-	-	-	RNP 1
09	TF	BEKOL	-	283 (280)	+3.0	13.6	-	+4800m	-	RNP 1

**WAYPOINT LIST**

BEKOL 1Z RWY 07L		
Waypoint Identifier	Coordinates (WGS-84)	
HH303	22 20 50.02N	113 57 42.83E
ROVER	22 20 35.58N	114 01 39.12E
HH363	22 19 29.68N	114 04 09.36E
HH364	22 16 56.52N	114 05 13.86E
RAMEN	22 09 39.22N	114 05 09.89E
HH381	22 09 02.10N	114 15 06.66E
HH382	22 11 23.06N	114 26 04.39E
AGOMU	22 30 15.17N	114 22 29.86E
BEKOL	22 32 36.00N	114 08 00.00E
RF Arc Centre Identifier	Coordinates (WGS-84)	
HH963	22 17 04.89N	114 01 24.20E
HH964	22 16 58.35N	114 01 16.75E