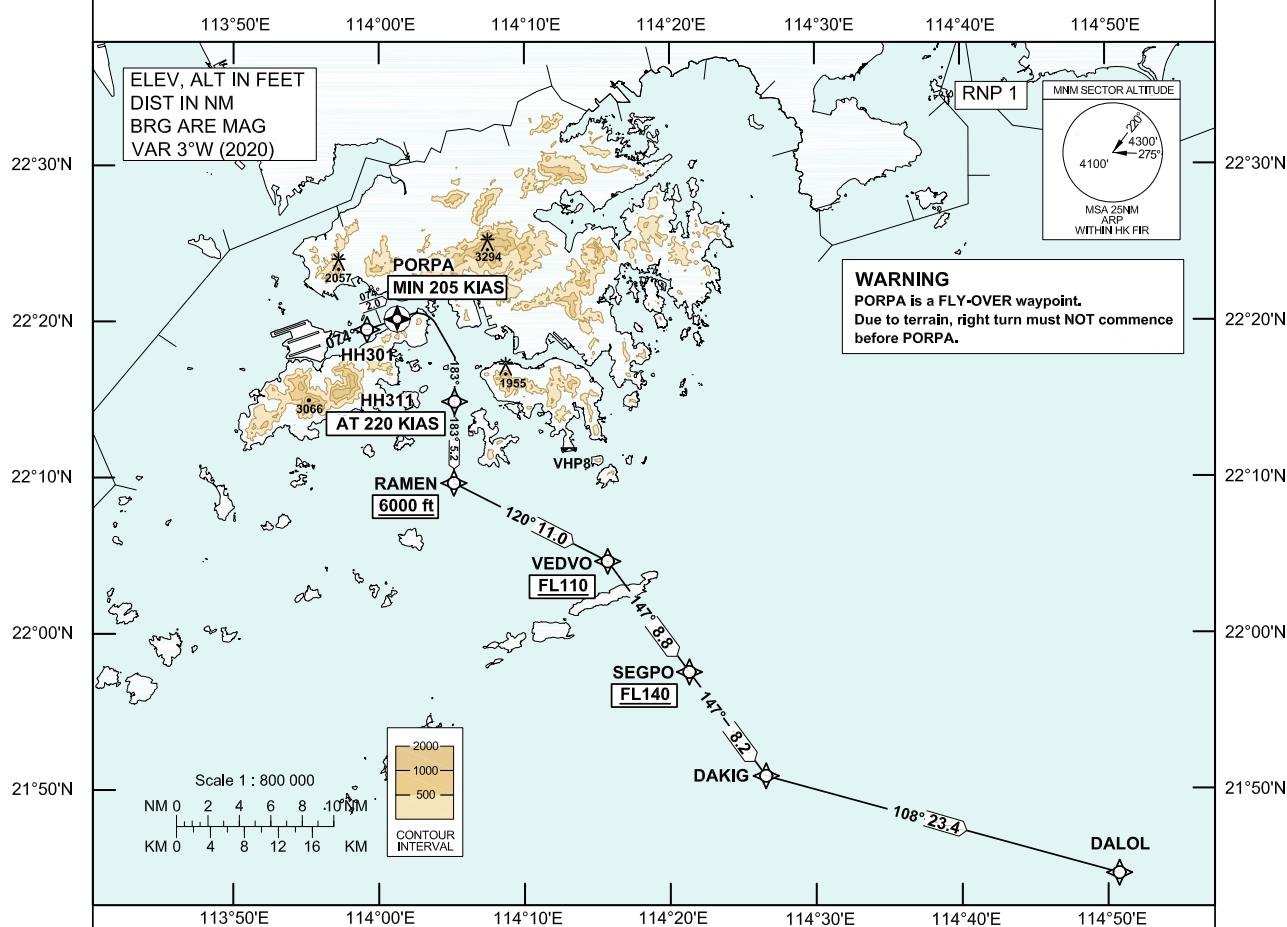


**STANDARD DEPARTURE CHART-
INSTRUMENT (SID) - ICAO**

Transition Altitude 9 000 ft	
Hong Kong Tower	118.4
Hong Kong Departure	122.0

**HONG KONG / Intl (VHHH)
RNAV (GNSS) DALOL 1A SID RWY 07R**

1. In the event that PBN performance ceases to comply with the requirements for RNP 1 after departure, pilots must notify ATC as soon as possible. ATC assistance would be provided as necessary.
2. Only specific categories of flights (e.g. SAR) as stated in GEN 1.5 para 3.5.3.5 are exempted from the RNP 1 requirement. These flights shall fly the contingency procedures as detailed in VHHH AD 2.22 para 2.2.3.5.
3. PORPA is a **FLY-OVER** waypoint. All other waypoints are fly-by.

**DALOL 1A SID RWY 07R****CLIMB REQUIREMENT**

Initial climb to 5 000 ft. Expect further climb when instructed by ATC. Comply with all the published altitude restrictions. If unable to comply with the vertical profile, pilot shall inform ATC prior to start-up.

TERRAIN CLEARANCE

Minimum climb gradient of 4.8% (292 ft/NM) until passing 1 200 ft is required.

SPEED RESTRICTION

Speed restriction of 205 KIAS or greater at PORPA and 220 KIAS until HH311.

CHANGE: New procedure.

FMC Database Coding Reference for Hong Kong RNAV_(GNSS) SID**TABULAR DESCRIPTION: DALOL 1A RWY 07R**

Serial Number	Path Descriptor	Waypoint Identifier	Fly-over	Course °M (°T)	Magnetic Variation	Distance (NM)	Turn Direction	Altitude (ft)	Speed (KIAS)	Navigation Specification
01	CF	HH301	-	074 (071)	+3.0	-	-	-	-	RNP 1
02	TF	PORPA	Y	074 (071)	+3.0	2.0	-	-	+205	RNP 1
03	CF	HH311	-	183 (180)	+3.0	-	R	-	@220	RNP 1
04	TF	RAMEN	-	183 (180)	+3.0	5.2	-	+6000	-	RNP 1
05	TF	VEDVO	-	120 (117)	+3.0	11.0	-	+FL110	-	RNP 1
06	TF	SEGPO	-	147 (144)	+3.0	8.8	-	+FL140	-	RNP 1
07	TF	DAKIG	-	147 (144)	+3.0	8.2	-	-	-	RNP 1
08	TF	DALOL	-	108 (105)	+3.0	23.4	-	-	-	RNP 1

WAYPOINT LIST

DALOL 1A RWY 07R		
Waypoint Identifier	Coordinates (WGS-84)	
HH301	22 19 29.01N	113 59 11.61E
PORPA	22 20 09.10N	114 01 16.30E
HH311	22 14 52.34N	114 05 12.73E
RAMEN	22 09 39.22N	114 05 09.89E
VEDVO	22 04 38.19N	114 15 43.05E
SEGPO	21 57 32.77N	114 21 18.59E
DAKIG	21 50 52.90N	114 26 33.33E
DALOL	21 44 36.90N	114 50 45.34E