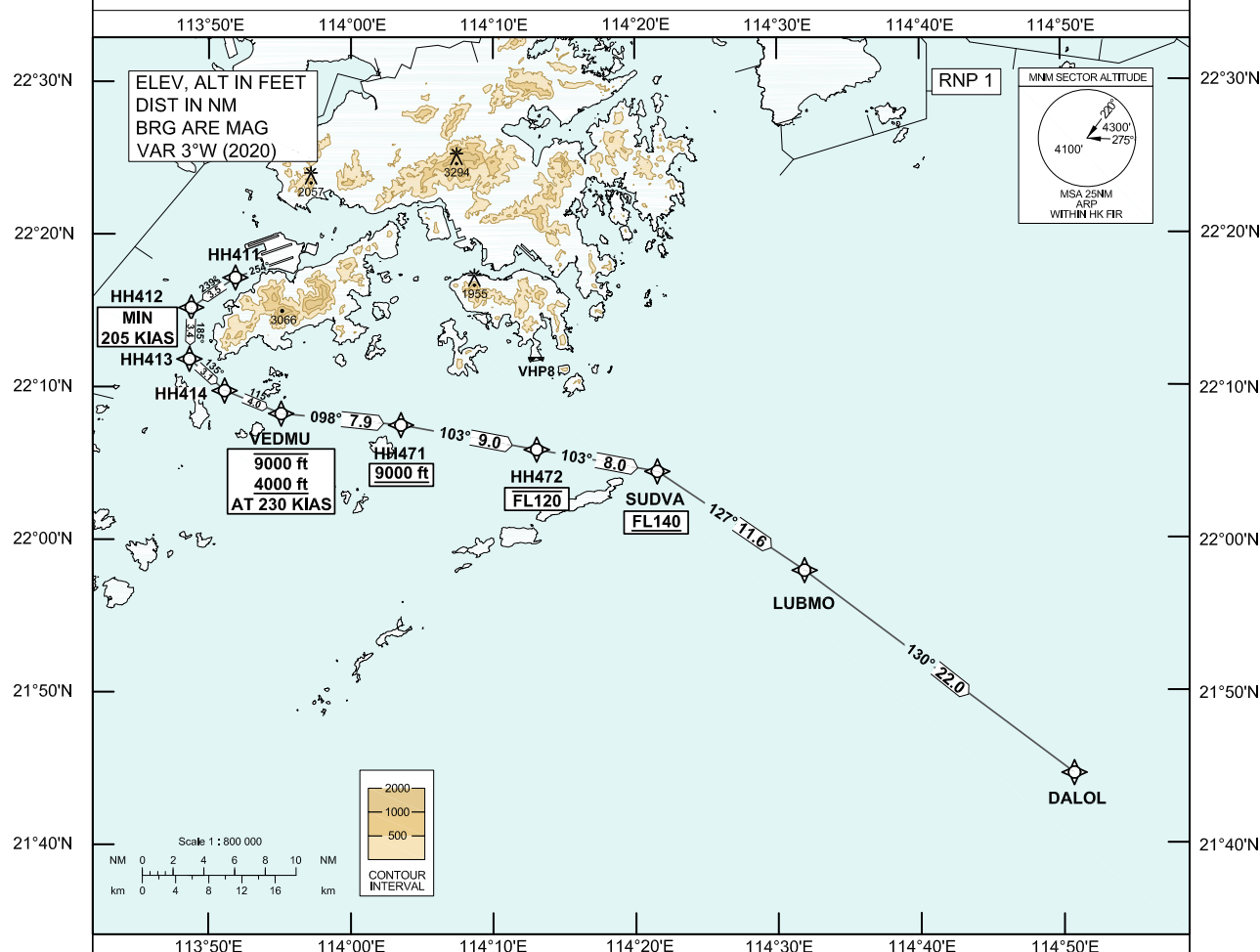


**STANDARD DEPARTURE CHART-
INSTRUMENT (SID) - ICAO**

Transition Altitude 9 000 ft	
Hong Kong Tower	118.4
Hong Kong Departure	122.0

**HONG KONG / Intl (VHHH)
RNAV (GNSS) DALOL 1B SID RWY 25L**

1. In the event that PBN performance ceases to comply with the requirements for RNP 1 after departure, pilots must notify ATC as soon as possible. ATC assistance would be provided as necessary.
2. Only specific categories of flights (e.g. SAR) as stated in GEN 1.5 para 3.5.3.5 are exempted from the RNP 1 requirement. These flights shall fly the contingency procedures as detailed in VHHH AD 2.22 para 2.2.3.5.

**DALOL 1B SID RWY 25L****CLIMB REQUIREMENT**

Initial climb to 5 000 ft. Expect further climb when instructed by ATC. Comply with all the published altitude restrictions. If unable to comply with the vertical profile, pilot shall inform ATC prior to start-up.

TERRAIN CLEARANCE

Minimum climb gradient of 4.7% (286 ft/NM) until passing 1 600 ft is required.

SPEED RESTRICTION

Speed restriction of 205 KIAS or greater at HH412 and 230 KIAS until VEDMU.

CHANGE: New procedure.

FMC Database Coding Reference for Hong Kong RNAV_(GNSS) SID**TABULAR DESCRIPTION: DALOL 1B RWY 25L**

Serial Number	Path Descriptor	Waypoint Identifier	Fly-over	Course °M (°T)	Magnetic Variation	Distance (NM)	Turn Direction	Altitude (ft)	Speed (KIAS)	Navigation Specification
01	CF	HH411	-	254 (251)	+3.0	-	-	-	-	RNP 1
02	TF	HH412	-	239 (236)	+3.0	3.5	-	-	+205	RNP 1
03	TF	HH413	-	185 (182)	+3.0	3.4	-	-	-	RNP 1
04	TF	HH414	-	135 (132)	+3.0	3.1	-	-	-	RNP 1
05	TF	VEDMU	-	115 (112)	+3.0	4.0	-	-9000 +4000	@230	RNP 1
06	TF	HH471	-	098 (095)	+3.0	7.9	-	+9000	-	RNP 1
07	TF	HH472	-	103 (100)	+3.0	9.0	-	-FL120	-	RNP 1
08	TF	SUDVA	-	103 (100)	+3.0	8.0	-	+FL140	-	RNP 1
09	TF	LUBMO	-	127 (124)	+3.0	11.6	-	-	-	RNP 1
10	TF	DALOL	-	130 (127)	+3.0	22.0	-	-	-	RNP 1

WAYPOINT LIST

DALOL 1B RWY 25L		
Waypoint Identifier	Coordinates (WGS-84)	
HH411	22 17 08.52N	113 51 55.32E
HH412	22 15 10.92N	113 48 48.95E
HH413	22 11 48.90N	113 48 41.37E
HH414	22 09 44.51N	113 51 09.66E
VEDMU	22 08 14.02N	113 55 08.18E
HH471	22 07 28.61N	114 03 33.28E
HH472	22 05 51.49N	114 13 05.41E
SUDVA	22 04 25.14N	114 21 33.87E
LUBMO	21 57 55.24N	114 31 52.98E
DALOL	21 44 36.90N	114 50 45.34E