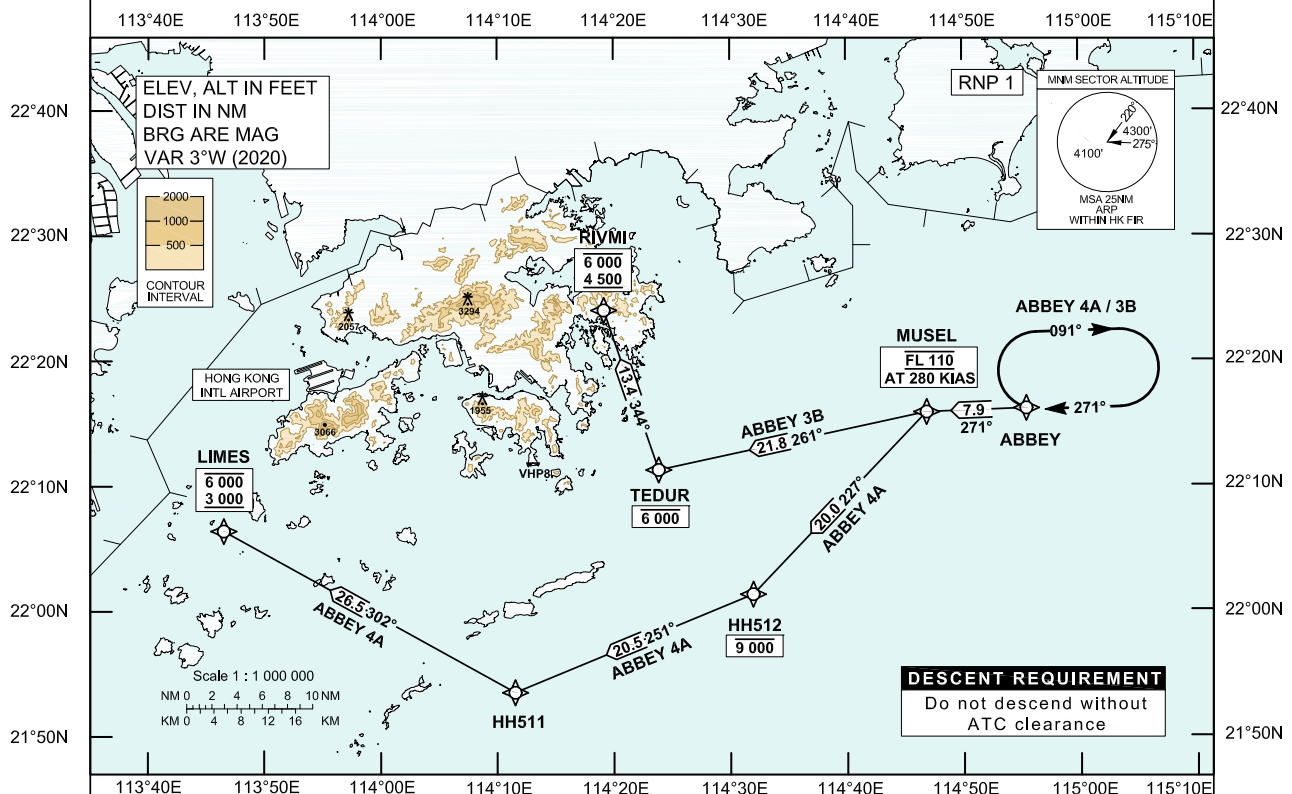


**STANDARD ARRIVAL CHART-  
INSTRUMENT (STAR) - ICAO** Transition Altitude 9 000 ft HONG KONG RADAR 126.5 **HONG KONG / Intl (VHHH)**  
**RNAV (GNSS) ABBEY 4A STAR RWY 07L/07C/07R**  
**RNAV (GNSS) ABBEY 3B STAR RWY 25L/25C/25R**

1. For RNAV (GNSS) STAR, aircraft must be approved by State of Registry in accordance with ICAO RNP 1 standard or equivalent (see GEN 1.5 para 3.5.3). Carriage of certified GNSS receiver is mandatory.
2. In the event that PBN performance ceases to comply with the requirements for RNP 1 inflight, pilots must notify ATC as soon as possible. ATC assistance would be provided as necessary.
3. Only specific categories of flights (e.g. SAR) as stated in GEN 1.5 para 3.5.3.5 are exempted from the RNP 1 requirement.

**ABBHEY 4A STAR RWY 07L/07C/07R**

Expect ILS approach. Descend as directed by ATC.

**ABBHEY 3B STAR RWY 25L/25C/25R**

Expect ILS approach. Descend as directed by ATC.

**DESCENT REQUIREMENT**Cross MUSEL at FL110. **DO NOT DESCEND WITHOUT ATC CLEARANCE.****SPEED CONTROL**

Aircraft shall fly at 280 KIAS by MUSEL.

**HOLDING**

The holding pattern for ABBHEY STARS is established at ABBHEY. If holding is required, each flight will be instructed individually.

**ALTERNATIVE HOLDING**

In order to provide traffic management flexibility during peak periods of arrival or adverse weather situation in Hong Kong TMA, traffic may be instructed to hold at BETTY or other terminal holdings (see ENR 3.6) as directed by ATC.

**LOSS OF COMMUNICATION**

In the event of a loss of communication aircraft shall comply with the descent requirement and the STAR track above.

Thence:

For RWY 07L/07C/07R, maintain FL110 to LIMES. Join LIMES holding pattern and descend to 4 500 ft in the hold, then carry out the appropriate ILS approach procedure.

For RWY 25L/25C/25R, maintain FL110 to RIVMI. Join RIVMI holding pattern and descend to 4 500 ft in the hold, then carry out the appropriate ILS approach procedure.

CHANGE: New Procedures.

AD 2-VHHH-STAR-ABBEY\_V07\_240731km

**FMC Database Coding Reference for Hong Kong RNAV<sub>(GNSS)</sub> STARs****Designator: ABBEY 4A Runway 07L / Runway 07C / Runway 07R**

Serial Number	Path Descriptor	Waypoint Identifier	Fly-over	Course/Track (°M)	Magnetic Variation	Distance (NM)	Turn Dir	Altitude (ft)	Speed (KIAS)	Navigation Specification
01	IF	ABBEY	-	-	+3.0	-	-	-	-	RNP 1
02	TF	MUSEL	-	271	+3.0	7.9	-	@FL110	@280	RNP 1
03	TF	HH512	-	227	+3.0	20.0	-	-9000	-	RNP 1
04	TF	HH511	-	251	+3.0	20.5	-	-	-	RNP 1
05	TF	LIMES	-	302	+3.0	26.5	-	-6000 +3000	-	RNP 1

**Designator: ABBEY 3B Runway 25L / Runway 25C / Runway 25R**

Serial Number	Path Descriptor	Waypoint Identifier	Fly-over	Course/Track (°M)	Magnetic Variation	Distance (NM)	Turn Dir	Altitude (ft)	Speed (KIAS)	Navigation Specification
01	IF	ABBEY	-	-	+3.0	-	-	-	-	RNP 1
02	TF	MUSEL	-	271	+3.0	7.9	-	@FL110	@280	RNP 1
03	TF	TEDUR	-	261	+3.0	21.8	-	-6000	-	RNP 1
04	TF	RIVMI	-	344	+3.0	13.4	-	-6000 +4500	-	RNP 1

**Waypoint and Coordinates**

Waypoint Identifier	Coordinates (WGS-84)
ABBEY	22 16 11.00N 114 55 25.92E
MUSEL	22 15 53.99N 114 46 52.13E
HH512	22 01 21.80N 114 31 56.70E
HH511	21 53 32.24N 114 11 31.99E
LIMES	22 06 25.60N 113 46 32.60E
TEDUR	22 11 18.77N 114 23 51.26E
RIVMI	22 24 03.96N 114 19 09.28E