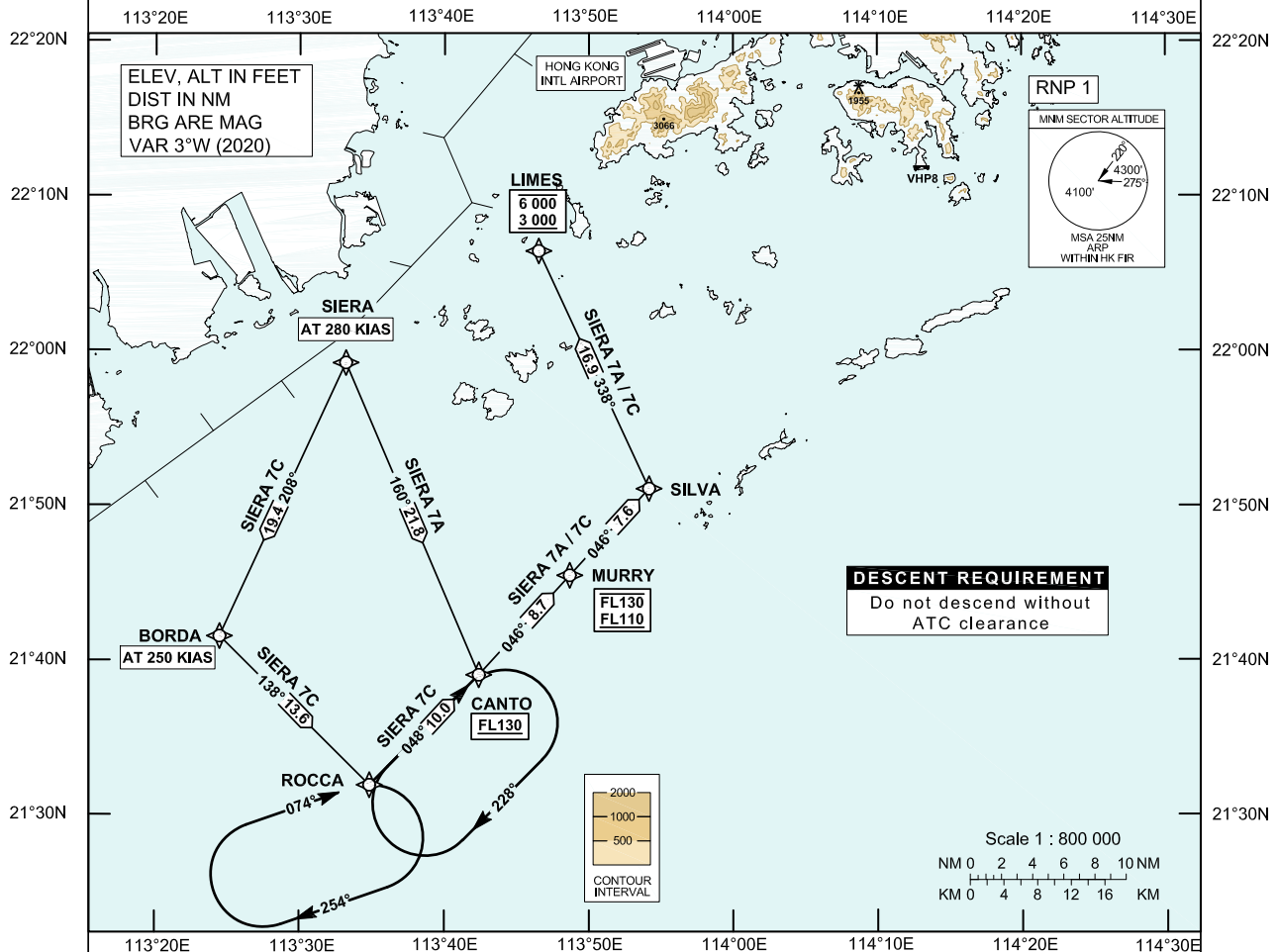


**STANDARD ARRIVAL CHART-
INSTRUMENT (STAR) - ICAO**Transition Altitude 9 000 ft
HONG KONG RADAR 127.55**HONG KONG / Intl (VHHH)
RNAV (GNSS) SIERA 7A / 7C STAR
RWY 07L/07C/07R**

1. For RNAV (GNSS) STAR, aircraft must be approved by State of Registry in accordance with ICAO RNP 1 standard or equivalent (see GEN 1.5 para 3.5.3). Carriage of certified GNSS receiver is mandatory.
2. In the event that PBN performance ceases to comply with the requirements for RNP 1 inflight, pilots must notify ATC as soon as possible. ATC assistance would be provided as necessary.
3. Only specific categories of flights (e.g. SAR) as stated in GEN 1.5 para 3.5.3.5 are exempted from the RNP 1 requirement.

**SIERA 7A STAR RWY 07L/07C/07R**

Expect ILS approach. Descend as directed by ATC.

SPEED CONTROL

Aircraft shall fly at 280 KIAS by SIERA.

SIERA 7C STAR RWY 07L/07C/07R

Expect ILS approach. Descend as directed by ATC.

SPEED CONTROL

Aircraft shall fly at 280 KIAS by SIERA and 250 KIAS by BORDA.

DESCENT REQUIREMENT

Cross CANTO FL130 or above. Cross MURRY between FL130 and FL110.

DO NOT DESCEND WITHOUT ATC CLEARANCE.**HOLDING**

The holding pattern for SIERA STARS is established at CANTO / ROCCA. If holding is required, each flight will be instructed individually.

ALTERNATIVE HOLDING

In order to provide traffic management flexibility during peak periods of arrivals or adverse weather situation in Hong Kong TMA, traffic may be instructed to hold at BETTY, GAMBA or other terminal holdings (see ENR 3.6) as directed by ATC.

LOSS OF COMMUNICATION

In the event of a loss of communication aircraft shall comply with the descent requirement and the STAR track above. Maintain FL130 to LIMES. Join LIMES holding pattern and descend to 4 500 ft in the hold, then carry out the appropriate ILS approach procedure.

CHANGE: RWY07C, Altitude restriction at LIMES.

FMC Database Coding Reference for Hong Kong RNAV_(GNSS) STARs**Designator: SIERA 7A Runway 07L / Runway 07C / Runway 07R**

Serial Number	Path Descriptor	Waypoint Identifier	Fly-over	Course/Track (°M)	Magnetic Variation	Distance (NM)	Turn Dir	Altitude (ft)	Speed (KIAS)	Navigation Specification
01	IF	SIERA	-	-	+3.0	-	-	-	@280	RNP 1
02	TF	CANTO	-	160	+3.0	21.8	-	+FL130	-	RNP 1
03	TF	MURRY	-	046	+3.0	8.7	L	-FL130 +FL110	-	RNP 1
04	TF	SILVA	-	046	+3.0	7.6	-	-	-	RNP 1
05	TF	LIMES	-	338	+3.0	16.9	-	-6000 +3000	-	RNP 1

Designator: SIERA 7C Runway 07L / Runway 07C / Runway 07R

Serial Number	Path Descriptor	Waypoint Identifier	Fly-over	Course/Track (°M)	Magnetic Variation	Distance (NM)	Turn Dir	Altitude (ft)	Speed (KIAS)	Navigation Specification
01	IF	SIERA	-	-	+3.0	-	-	-	@280	RNP 1
02	TF	BORDA	-	208	+3.0	19.4	-	-	@250	RNP 1
03	TF	ROCCA	-	138	+3.0	13.6	-	-	-	RNP 1
04	TF	CANTO	-	048	+3.0	10.0	L	+FL130	-	RNP 1
05	TF	MURRY	-	046	+3.0	8.7	-	-FL130 +FL110	-	RNP 1
06	TF	SILVA	-	046	+3.0	7.6	-	-	-	RNP 1
07	TF	LIMES	-	338	+3.0	16.9	-	-6000 +3000	-	RNP 1

Waypoint and Coordinates

Waypoint Identifier	Coordinates (WGS-84)
SIERA	21 59 12.00N 113 33 12.00E
BORDA	21 41 32.37N 113 24 29.01E
ROCCA	21 31 55.42N 113 34 51.44E
CANTO	21 39 02.63N 113 42 25.09E
MURRY	21 45 28.37N 113 48 41.97E
SILVA	21 51 04.50N 113 54 10.88E
LIMES	22 06 25.60N 113 46 32.60E