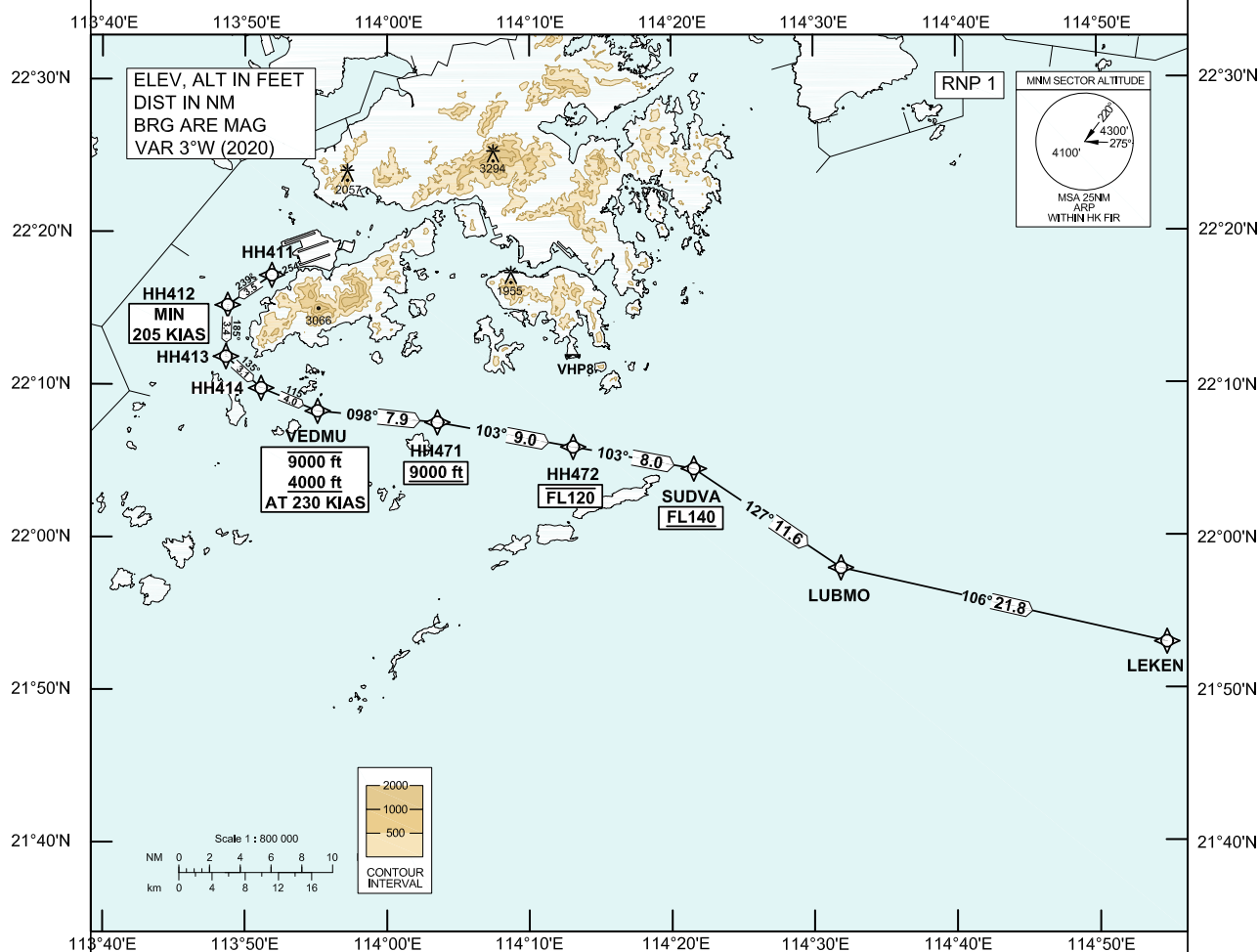


**STANDARD DEPARTURE CHART-  
INSTRUMENT (SID) - ICAO**

|                              |       |
|------------------------------|-------|
| Transition Altitude 9 000 ft |       |
| Hong Kong Tower              | 118.4 |
| Hong Kong Departure          | 122.0 |

**HONG KONG / Intl (VHHH)  
RNAV (GNSS) LEKEN 1B SID RWY 25L**

1. In the event that PBN performance ceases to comply with the requirements for RNP 1 after departure, pilots must notify ATC as soon as possible. ATC assistance would be provided as necessary.
2. Only specific categories of flights (e.g. SAR) as stated in GEN 1.5 para 3.5.3.5 are exempted from the RNP 1 requirement. These flights shall fly the contingency procedures as detailed in VHHH AD 2.22 para 2.2.3.5.

**LEKEN 1B SID RWY 25L****CLIMB REQUIREMENT**

Initial climb to 5 000 ft. Expect further climb when instructed by ATC. Comply with all the published altitude restrictions. If unable to comply with the vertical profile, pilot shall inform ATC prior to start-up.

**TERRAIN CLEARANCE**

Minimum climb gradient of 4.7% (286 ft/NM) until passing 1 600 ft is required.

**SPEED RESTRICTION**

Speed restriction of 205 KIAS or greater at HH412 and 230 KIAS until VEDMU.

CHANGE: New procedure.

**FMC Database Coding Reference for Hong Kong RNAV<sub>(GNSS)</sub> SID****TABULAR DESCRIPTION: LEKEN 1B RWY 25L**

| Serial Number | Path Descriptor | Waypoint Identifier | Fly-over | Course °M (°T) | Magnetic Variation | Distance (NM) | Turn Direction | Altitude (ft)  | Speed (KIAS) | Navigation Specification |
|---------------|-----------------|---------------------|----------|----------------|--------------------|---------------|----------------|----------------|--------------|--------------------------|
| 01            | CF              | HH411               | -        | 254 (251)      | +3.0               | -             | -              | -              | -            | RNP 1                    |
| 02            | TF              | HH412               | -        | 239 (236)      | +3.0               | 3.5           | -              | -              | +205         | RNP 1                    |
| 03            | TF              | HH413               | -        | 185 (182)      | +3.0               | 3.4           | -              | -              | -            | RNP 1                    |
| 04            | TF              | HH414               | -        | 135 (132)      | +3.0               | 3.1           | -              | -              | -            | RNP 1                    |
| 05            | TF              | VEDMU               | -        | 115 (112)      | +3.0               | 4.0           | -              | -9000<br>+4000 | @230         | RNP 1                    |
| 06            | TF              | HH471               | -        | 098 (095)      | +3.0               | 7.9           | -              | +9000          | -            | RNP 1                    |
| 07            | TF              | HH472               | -        | 103 (100)      | +3.0               | 9.0           | -              | -FL120         | -            | RNP 1                    |
| 08            | TF              | SUDVA               | -        | 103 (100)      | +3.0               | 8.0           | -              | +FL140         | -            | RNP 1                    |
| 09            | TF              | LUBMO               | -        | 127 (124)      | +3.0               | 11.6          | -              | -              | -            | RNP 1                    |
| 10            | TF              | LEKEN               | -        | 106 (103)      | +3.0               | 21.8          | -              | -              | -            | RNP 1                    |

**WAYPOINT LIST**

| LEKEN 1B RWY 25L    |                      |               |
|---------------------|----------------------|---------------|
| Waypoint Identifier | Coordinates (WGS-84) |               |
| HH411               | 22 17 08.52N         | 113 51 55.32E |
| HH412               | 22 15 10.92N         | 113 48 48.95E |
| HH413               | 22 11 48.90N         | 113 48 41.37E |
| HH414               | 22 09 44.51N         | 113 51 09.66E |
| VEDMU               | 22 08 14.02N         | 113 55 08.18E |
| HH471               | 22 07 28.61N         | 114 03 33.28E |
| HH472               | 22 05 51.49N         | 114 13 05.41E |
| SUDVA               | 22 04 25.14N         | 114 21 33.87E |
| LUBMO               | 21 57 55.24N         | 114 31 52.98E |
| LEKEN               | 21 53 01.06N         | 114 54 44.95E |