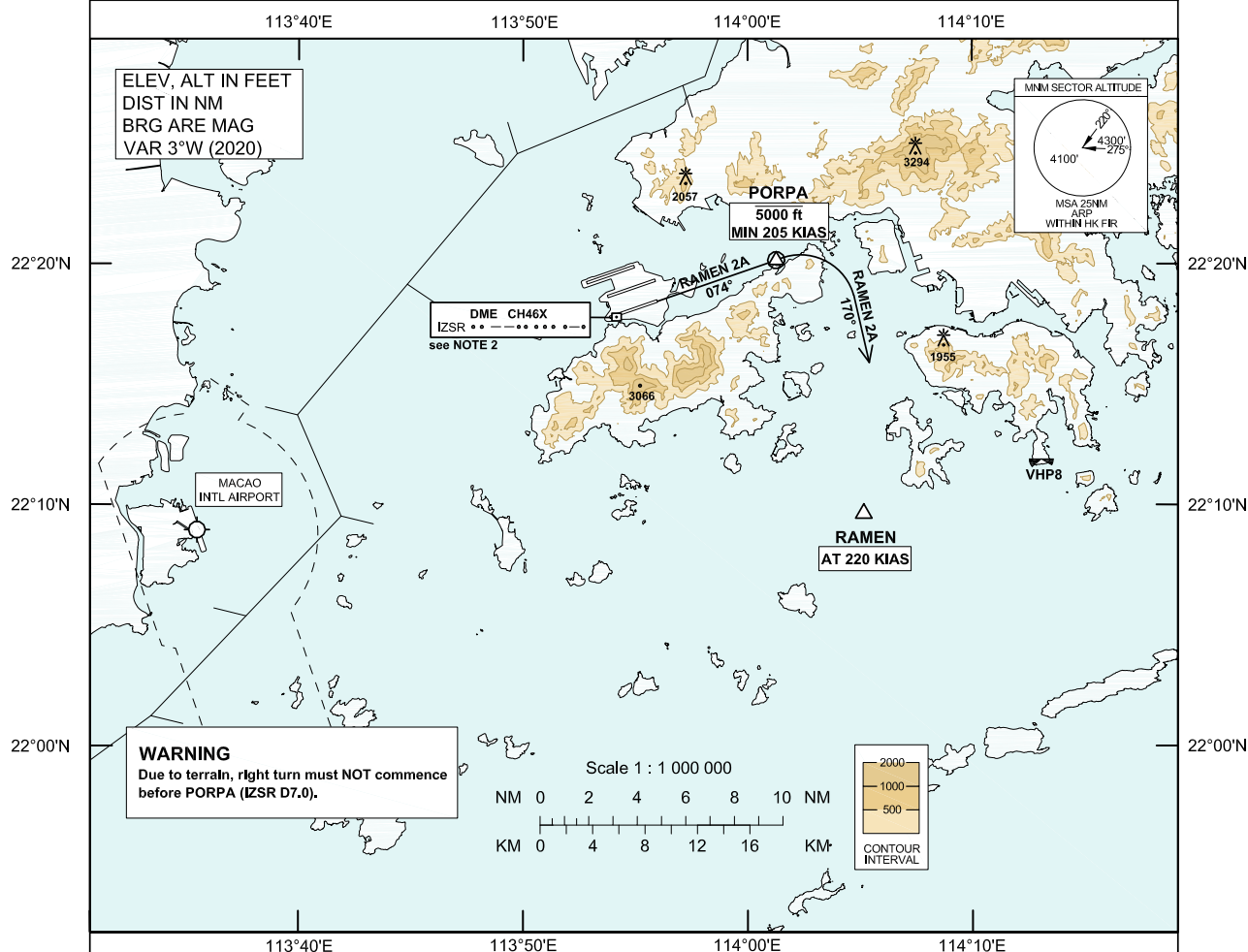


Transition Altitude 9 000 ft	
Hong Kong Tower	118.4
Hong Kong Departure	122.0

1. This is contingency procedure exclusive for flights exempted from RNP1 requirement as specified in GEN 1.5 para 3.5.3.5.
2. DME is required.
3. To maintain terrain clearance, **DO NOT** turn right before passing PORPA (IZSR D7.0).



CONVENTIONAL PROCEDURE

CLIMB REQUIREMENT

TERRAIN CLEARANCE

Minimum climb gradient of 4.9% (298 ft/NM) until leaving 1400 ft is required.

SPEED RESTRICTION

Speed restriction of 205 KIAS or greater at PORPA and 220 KIAS until RAMEN.

I

RWY 07R RAMEN 2A DEPARTURE

NAVIGATION AIDS

Navaid/Ident	Frequency	Coordinates		Remarks
DME/IZSR	CH 46X	22 17 47.78N	113 54 09.48E	

WAYPOINT LIST

RAMEN 2A RWY 07R			
Waypoint Identifier	Coordinates (WGS-84)		Cross Reference from Navaid
PORPA	22 20 09.10N	114 01 16.30E	IZSR DME 7.0 NM
RAMEN	22 09 39.22N	114 05 09.89E	-