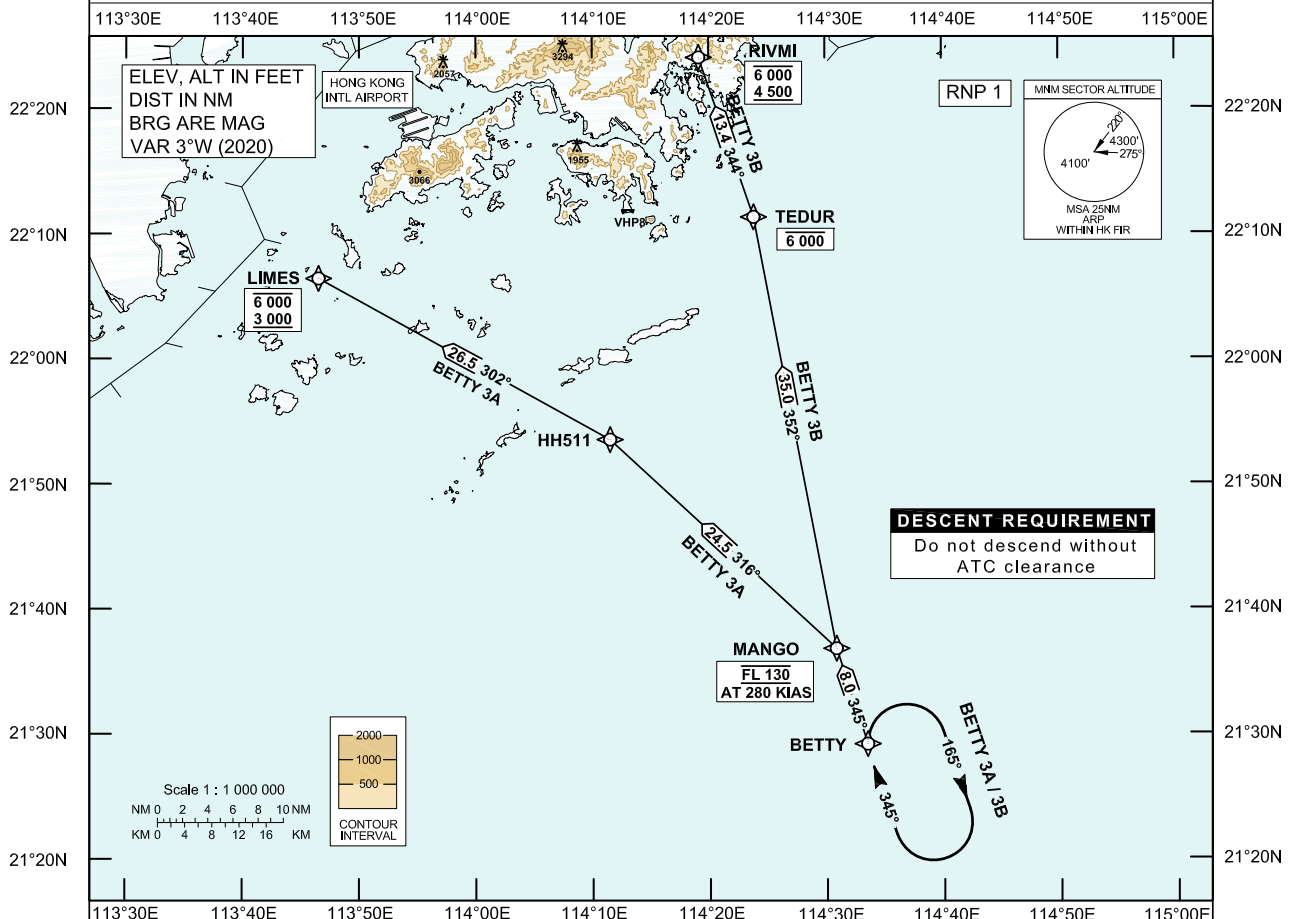


**STANDARD ARRIVAL CHART-
INSTRUMENT (STAR) - ICAO** **HONG KONG / Intl (VHHH)**
Transition Altitude 9 000 ft **HONG KONG RADAR 126.3**
RNAV (GNSS) BETTY 3A STAR RWY 07L/07C/07R
RNAV (GNSS) BETTY 3B STAR RWY 25L/25C/25R

1. For RNAV (GNSS) STAR, aircraft must be approved by State of Registry in accordance with ICAO RNP 1 standard or equivalent (see GEN 1.5 para 3.5.3). Carriage of certified GNSS receiver is mandatory.
2. In the event that PBN performance ceases to comply with the requirements for RNP 1 inflight, pilots must notify ATC as soon as possible. ATC assistance would be provided as necessary.
3. Only specific categories of flights (e.g. SAR) as stated in GEN 1.5 para 3.5.3.5 are exempted from the RNP 1 requirement.

**BETTY 3A STAR RWY 07L/07C/07R**

Expect ILS approach. Descend as directed by ATC.

BETTY 3B STAR RWY 25L/25C/25R

Expect ILS approach. Descend as directed by ATC.

DESCENT REQUIREMENTCross MANGO at FL130. **DO NOT DESCEND WITHOUT ATC CLEARANCE.****SPEED CONTROL**

Aircraft shall fly at 280 KIAS by MANGO.

HOLDING

The holding pattern for BETTY STARs is established at BETTY. If holding is required, each flight will be instructed individually.

ALTERNATIVE HOLDING

In order to provide traffic management flexibility during peak periods of arrival or adverse weather situation in Hong Kong TMA, traffic may be instructed to hold at BAKER, CANTO or other terminal holdings (see ENR 3.6) as directed by ATC.

LOSS OF COMMUNICATION

In the event of a loss of communication aircraft shall comply with the descent requirement and the STAR track above.

Thence:

For RWY 07L/07C/07R, maintain FL130 to LINES. Join LINES holding pattern and descend to 4 500 ft in the hold, then carry out the appropriate ILS approach procedure.

For RWY 25L/25C/25R, maintain FL130 to RIVMI. Join RIVMI holding pattern and descend to 4 500 ft in the hold, then carry out the appropriate ILS approach procedure.

CHANGE: New Procedures.

FMC Database Coding Reference for Hong Kong RNAV_(GNSS) STARs**Designator: BETTY 3A Runway 07L / Runway 07C / Runway 07R**

<i>Serial Number</i>	<i>Path Descriptor</i>	<i>Waypoint Identifier</i>	<i>Fly-over</i>	<i>Course/Track (°M)</i>	<i>Magnetic Variation</i>	<i>Distance (NM)</i>	<i>Turn Dir</i>	<i>Altitude (ft)</i>	<i>Speed (KIAS)</i>	<i>Navigation Specification</i>
01	IF	BETTY	-	-	+3.0	-	-	-	-	RNP 1
02	TF	MANGO	-	345	+3.0	8.0	-	@FL130	@280	RNP 1
03	TF	HH511	-	316	+3.0	24.5	-	-	-	RNP 1
04	TF	LIMES	-	302	+3.0	26.5	-	-6000 +3000	-	RNP 1

Designator: BETTY 3B Runway 25L / Runway 25C / Runway 25R

<i>Serial Number</i>	<i>Path Descriptor</i>	<i>Waypoint Identifier</i>	<i>Fly-over</i>	<i>Course/Track (°M)</i>	<i>Magnetic Variation</i>	<i>Distance (NM)</i>	<i>Turn Dir</i>	<i>Altitude (ft)</i>	<i>Speed (KIAS)</i>	<i>Navigation Specification</i>
01	IF	BETTY	-	-	+3.0	-	-	-	-	RNP 1
02	TF	MANGO	-	345	+3.0	8.0	-	@FL130	@280	RNP 1
03	TF	TEDUR	-	352	+3.0	35.0	-	-6000	-	RNP 1
04	TF	RIVMI	-	344	+3.0	13.4	-	-6000 +4500	-	RNP 1

Waypoint and Coordinates

<i>Waypoint Identifier</i>	<i>Coordinates (WGS-84)</i>
BETTY	21 29 10.82N 114 33 31.92E
MANGO	21 36 49.00N 114 30 53.00E
HH511	21 53 32.24N 114 11 31.99E
TEDUR	22 11 18.77N 114 23 51.26E
RIVMI	22 24 03.96N 114 19 09.28E
LIMES	22 06 25.60N 113 46 32.60E