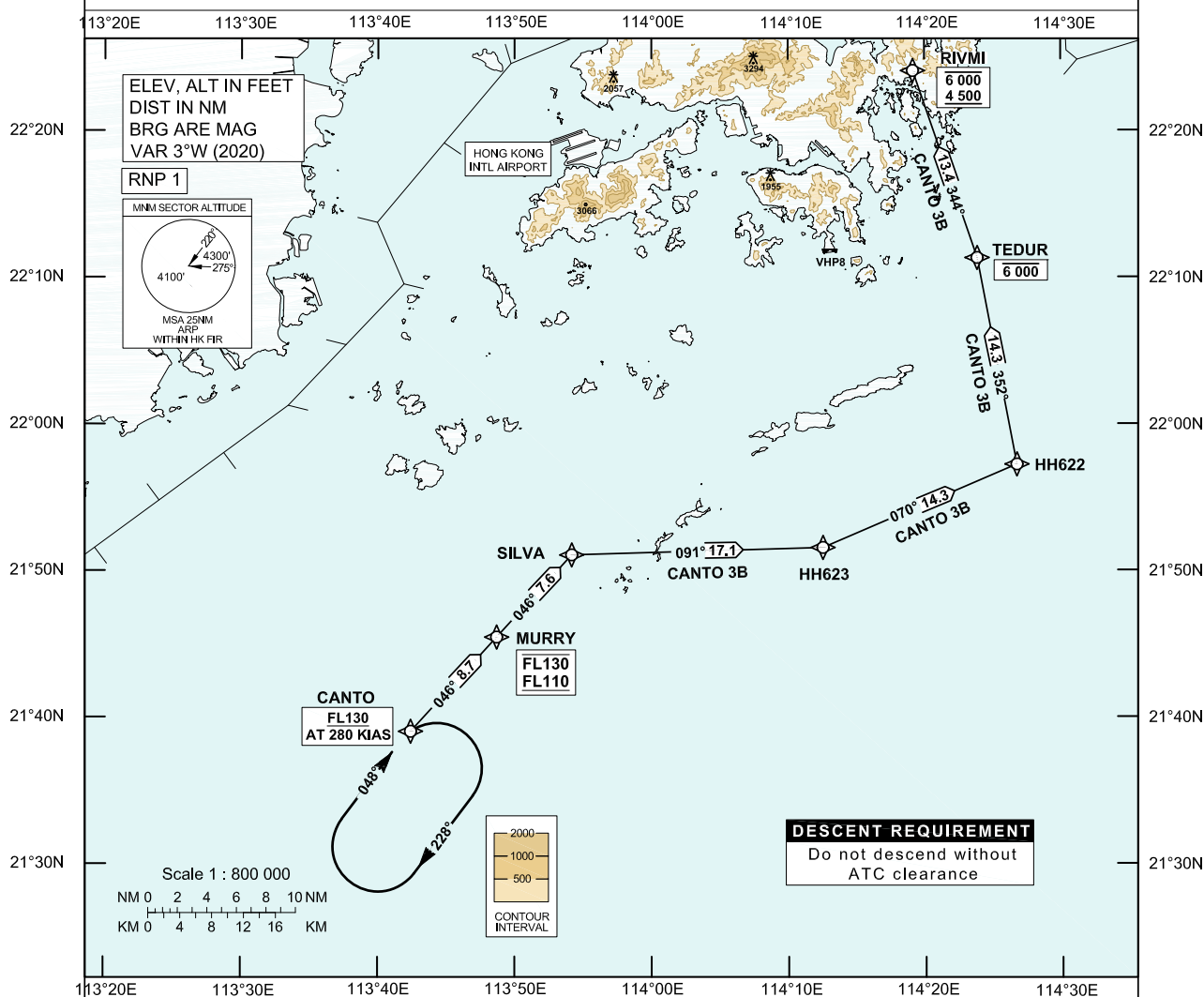


**STANDARD ARRIVAL CHART-  
INSTRUMENT (STAR) - ICAO**Transition Altitude 9 000 ft  
HONG KONG RADAR 127.55**HONG KONG / Intl (VHHH)  
RNAV (GNSS) CANTO 3B STAR  
RWY 25L/25C/25R**

1. For RNAV (GNSS) STAR, aircraft must be approved by State of Registry in accordance with ICAO RNP 1 standard or equivalent (see GEN 1.5 para 3.5.3). Carriage of certified GNSS receiver is mandatory.
2. In the event that PBN performance ceases to comply with the requirements for RNP 1 inflight, pilots must notify ATC as soon as possible. ATC assistance would be provided as necessary.
3. Only specific categories of flights (e.g. SAR) as stated in GEN 1.5 para 3.5.3.5 are exempted from the RNP 1 requirement.

**CANTO 3B STAR RWY 25L/25C/25R**

Expect ILS approach. Descend as directed by ATC.

**DESCENT REQUIREMENT**

Cross CANTO FL130 or above. Cross MURRY between FL130 and FL110.  
**DO NOT DESCEND WITHOUT ATC CLEARANCE.**

**SPEED CONTROL**

Aircraft shall fly at 280 KIAS by CANTO.

**HOLDING**

The holding pattern for CANTO STARs is established at CANTO. In the event of holding, each flight will be instructed individually.

**ALTERNATIVE HOLDING**

In order to provide traffic management flexibility during peak periods of arrival or adverse weather situation in Hong Kong TMA, traffic may be instructed to hold at COMBI, BETTY or other terminal holdings (see ENR 3.6) as directed by ATC.

**LOSS OF COMMUNICATION**

In the event of a loss of communication aircraft shall comply with the descent requirement and the STAR track above. Maintain FL130 to RIVMI. Join RIVMI holding pattern and descend to 4 500 ft in the hold, then carry out the appropriate ILS approach procedure.

CHANGE: New Procedure.

**FMC Database Coding Reference for Hong Kong RNAV<sub>(GNSS)</sub> STAR****Designator: CANTO 3B Runway 25L / Runway 25C / Runway 25R**

<i>Serial Number</i>	<i>Path Descriptor</i>	<i>Waypoint Identifier</i>	<i>Fly-over</i>	<i>Course/Track (°M)</i>	<i>Magnetic Variation</i>	<i>Distance (NM)</i>	<i>Turn Dir</i>	<i>Altitude (ft)</i>	<i>Speed (KIAS)</i>	<i>Navigation Specification</i>
01	IF	CANTO	-	-	+3.0	-	-	+FL130	@280	RNP 1
02	TF	MURRY	-	046	+3.0	8.7	-	-FL130 +FL110	-	RNP 1
03	TF	SILVA	-	046	+3.0	7.6	-	-	-	RNP 1
04	TF	HH623	-	091	+3.0	17.1	-	-	-	RNP 1
05	TF	HH622	-	070	+3.0	14.3	-	-	-	RNP 1
06	TF	TEDUR	-	352	+3.0	14.3	-	-6000	-	RNP 1
07	TF	RIVMI	-	344	+3.0	13.4	-	-6000 +4500	-	RNP 1

**Waypoint and Coordinates**

<i>Waypoint Identifier</i>	<i>Coordinates (WGS-84)</i>
CANTO	21 39 02.63N 113 42 25.09E
MURRY	21 45 28.37N 113 48 41.97E
SILVA	21 51 04.50N 113 54 10.88E
HH623	21 51 34.24N 114 12 32.62E
HH622	21 57 14.02N 114 26 43.79E
TEDUR	22 11 18.77N 114 23 51.26E
RIVMI	22 24 03.96N 114 19 09.28E