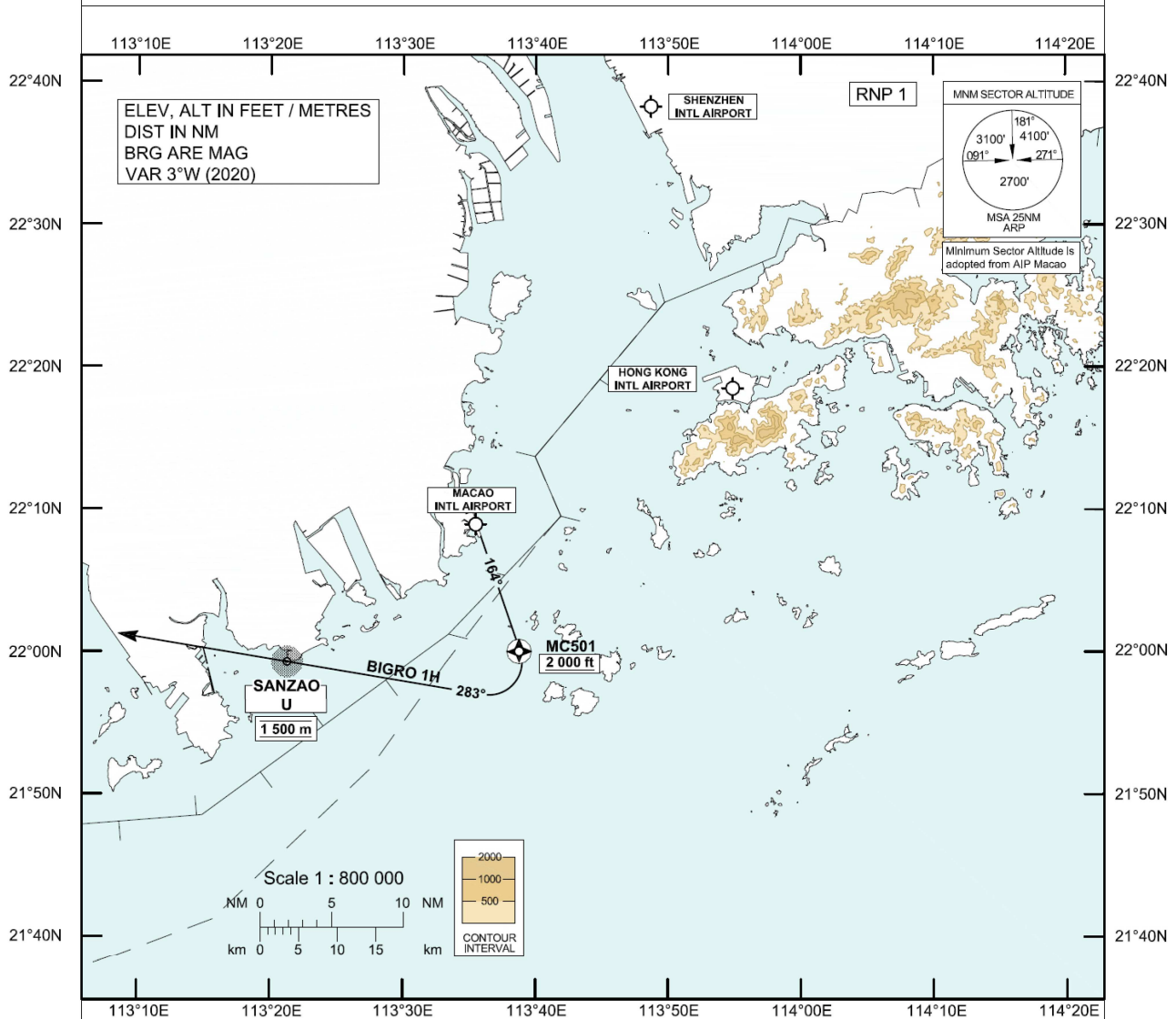


**STANDARD DEPARTURE CHART-
INSTRUMENT (SID) - ICAO**Transition Altitude 9 000 ft
HONG KONG RADAR 123.95**MACAO / Intl (VMC)
RWY 16
RNAV (GNSS) BIGRO 1H SID**

1. For use when MCU DVOR is not available.
2. Aircraft shall comply with the Macao RWY 16 SID procedure as published in the AIP Macao.

**BIGRO 1H SID RWY 16****RNP 1 Procedure****MC501 - U**

Continue in accordance with the SID procedure as published in the AIP Macao.

CLIMB REQUIREMENT

Cross MC501 at or above 2 000 ft (610 m).

Cross U NDB at 1 500 m. Expect further climb in accordance with procedure published in the AIP Macao.

This procedure requires a minimum climb gradient of 3.8% until reaching 1 500 m.**SPEED CONTROL**

Maximum departure turning speed: 205 KIAS

CHANGE: Update of MSA.

FMC Database Coding Reference for Macao RNAV_(GNSS) SIDs

Designator: BIGRO 1H RWY 16

Serial Number	Path Descriptor	Waypoint Identifier	Fly-over	Course /Track °M (°T)	Magnetic Variation	Distance (NM)	Turn Direction	Altitude (ft)	Speed (KIAS)	Navigation Specification
Aircraft shall comply with the Macao RWY 16 SID procedure as published in the AIP Macao										
	CF	MC501	Y	164 (161)	+3.0	-	-	+2000	-205	RNP 1
	CF	U	-	-	+3.0	-	R	@1500M	-205	RNP 1

WAYPOINT LIST

BIGRO 1H RWY 16			
Waypoint Identifier		Coordinates (WGS84)	
MC501		22 00 03.00 N	113 38 45.76 E
U		21 59.3 N	113 21.3 E