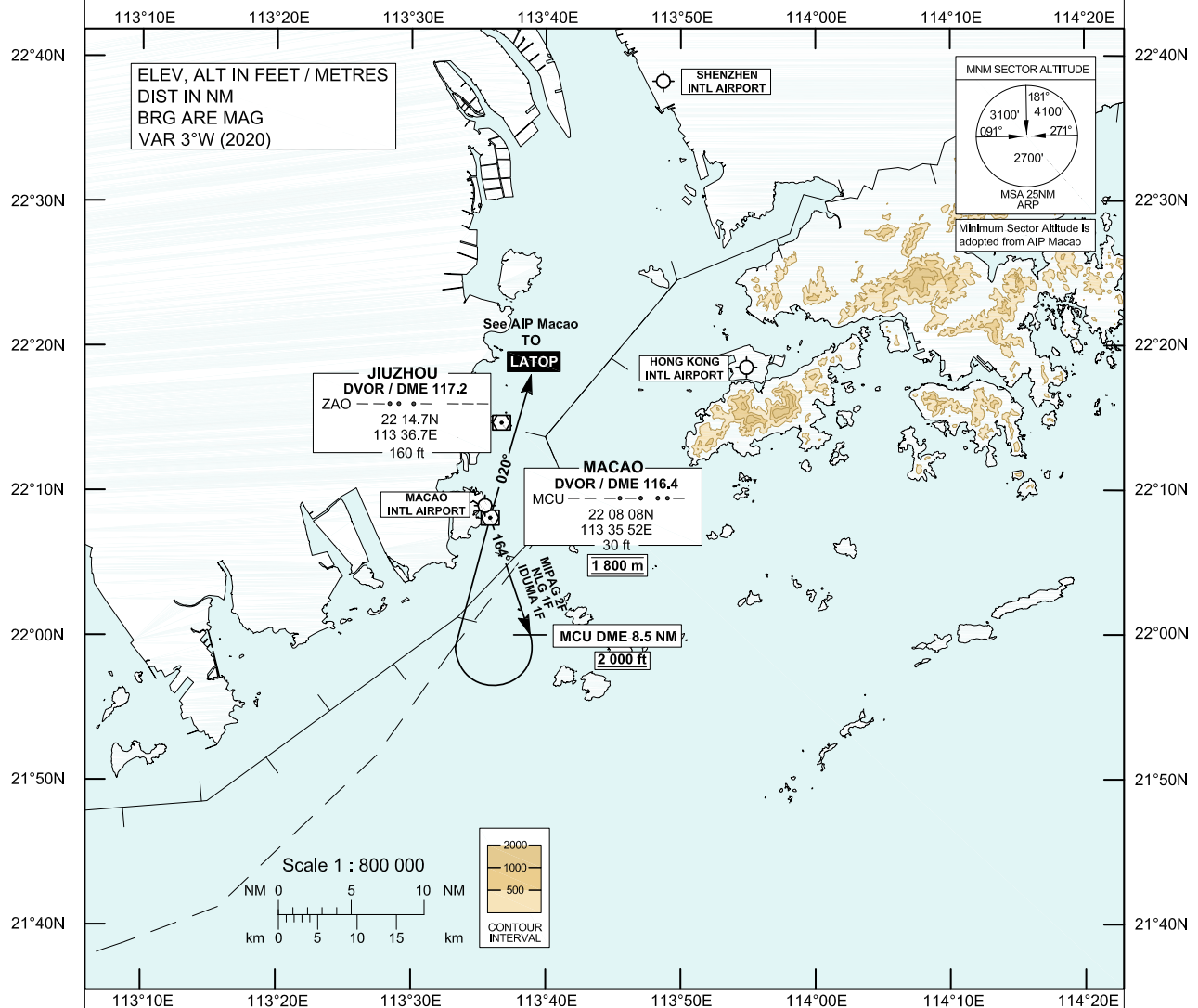


**STANDARD DEPARTURE CHART-  
INSTRUMENT (SID) - ICAO**Transition Altitude 9 000 ft  
HONG KONG RADAR 123.95**MACAO / Intl (VMC)  
RWY 16  
MIPAG 2F SID  
NLG 1F SID  
IDUMA 1F SID**

Aircraft shall comply with the Macao RWY 16 SID procedure as published in the AIP Macao.

**MIPAG 2F / NLG 1F / IDUMA 1F SID RWY 16**

Continue outbound on MCU RDL 164 to MCU DME 8.5 NM then turn right to establish inbound on MCU RDL 197. Leave MCU DVOR on RDL 020. Continue in accordance with the SID procedure as published in the AIP Macao.

**If MCU DVOR is not available**

Climb straight ahead to 1 800 m and cross ZAO DME 14.8 NM at 2 000 ft (610 m) or above, then turn right to ZAO via ZAO RDL 195 and cross ZAO DME 6.7 NM at 1 800 m. Continue in accordance with the SID procedure as published in AIP Macao.

**CLIMB INSTRUCTIONS**

Cross MCU RDL 164 / DME 8.5 NM at or above 2 000 ft (610 m) climbing to 1 800 m.

Cross MCU DVOR at 1 800 m. Expect further climb in accordance with procedure published in the AIP Macao.

**These procedures require a minimum climb gradient of 3.8% until reaching 2 400 m for NLG 1F and leaving 2 400 m for MIPAG 2F and IDUMA 1F.**

**SPEED CONTROL**

Maximum departure turning speed: 205 KIAS.

CHANGE: Update of IDUMA 1F SID.