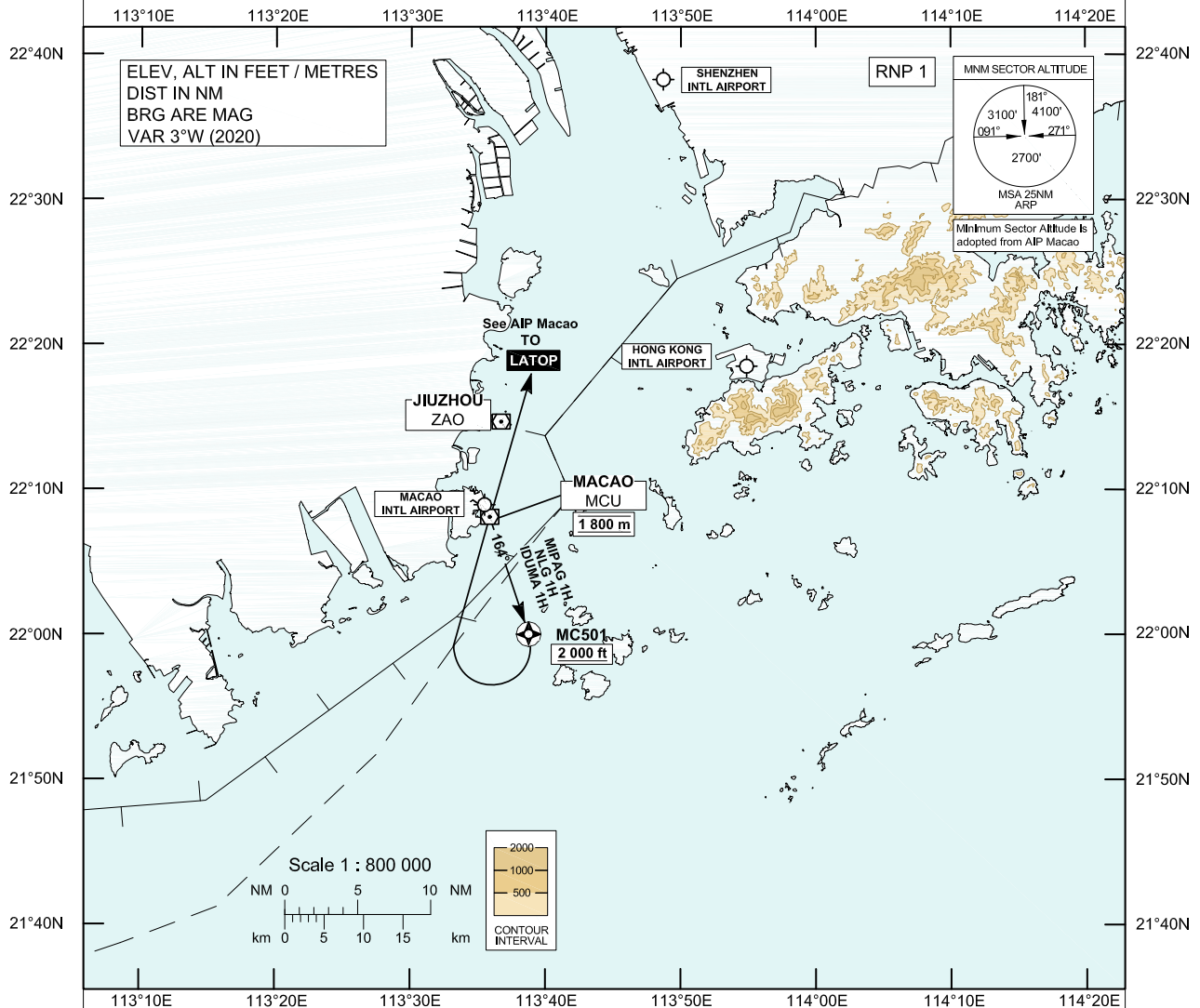


**STANDARD DEPARTURE CHART-
INSTRUMENT (SID) - ICAO**Transition Altitude 9 000 ft
HONG KONG RADAR 123.95**MACAO / Intl (VMMC)
RWY 16
RNAV (GNSS) MIPAG 1H SID
RNAV (GNSS) NLG 1H SID
RNAV (GNSS) IDUMA 1H SID**

Aircraft shall comply with the Macao RWY 16 SID procedure as published in the AIP Macao.

**MIPAG 1H / NLG 1H / IDUMA 1H SID RWY 16****Basic-RNP 1 Procedure**

(Mandate procedure available to aircraft appropriately equipped and approved)

MC501 - MCU - LATOP

Continue in accordance with the SID procedure as published in the AIP Macao.

CLIMB REQUIREMENT

Cross MC501 at or above 2 000 ft (610 m), climbing to 1 800 m.

Cross MCU at 1 800 m. Expect further climb in accordance with procedure published in the AIP Macao.

These procedures require a minimum climb gradient of 3.8% until reaching 2 400 m for NLG 1H and leaving 2 400 m for MIPAG 1H and IDUMA 1H.**SPEED CONTROL**

Maximum departure turning speed: 205 KIAS.

CHANGE: Update of IDUMA 1H SID.

FMC Database Coding Reference for Macao RNAV_(GNSS) SIDs**Designator: NLG 1H RWY 16**

Serial Number	Path Descriptor	Waypoint Identifier	Fly-over	Course /Track °M (°T)	Magnetic Variation	Distance (NM)	Turn Direction	Altitude (ft)	Speed (KIAS)	Navigation Specification
Aircraft shall comply with the Macao RWY 16 SID procedure as published in the AIP Macao										
	CF	MC501	Y	164 (161)	+3.0	-	-	+2000	-205	RNP 1
	DF	MCU	-	-	+3.0	-	R	@1800M	-205	RNP 1

Designator: IDUMA 1H RWY 16

Serial Number	Path Descriptor	Waypoint Identifier	Fly-over	Course /Track °M (°T)	Magnetic Variation	Distance (NM)	Turn Direction	Altitude (ft)	Speed (KIAS)	Navigation Specification
Aircraft shall comply with the Macao RWY 16 SID procedure as published in the AIP Macao										
	CF	MC501	Y	164 (161)	+3.0	-	-	+2000	-205	RNP 1
	DF	MCU	-	-	+3.0	-	R	@1800M	-205	RNP 1

Designator: MIPAG 1H RWY 16

Serial Number	Path Descriptor	Waypoint Identifier	Fly-over	Course /Track °M (°T)	Magnetic Variation	Distance (NM)	Turn Direction	Altitude (ft)	Speed (KIAS)	Navigation Specification
Aircraft shall comply with the Macao RWY 16 SID procedure as published in the AIP Macao										
	CF	MC501	Y	164 (161)	+3.0	-	-	+2000	-205	RNP 1
	DF	MCU	-	-	+3.0	-	R	@1800M	-205	RNP 1

WAYPOINT LIST

NLG 1H/IDUMA 1H/MIPAG 1H RWY 16		
Waypoint Identifier	Coordinates (WGS84)	
MC501	22 00 03.00 N	113 38 45.76 E
MCU	22 08 08 N	113 35 52 E