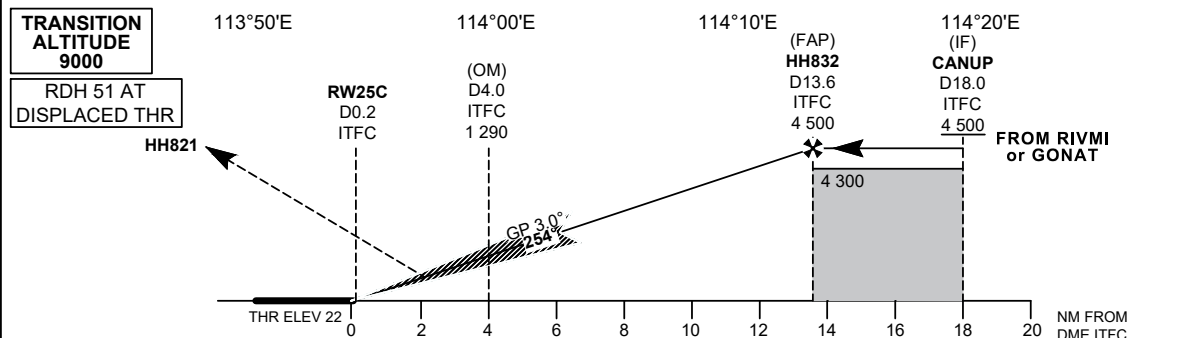
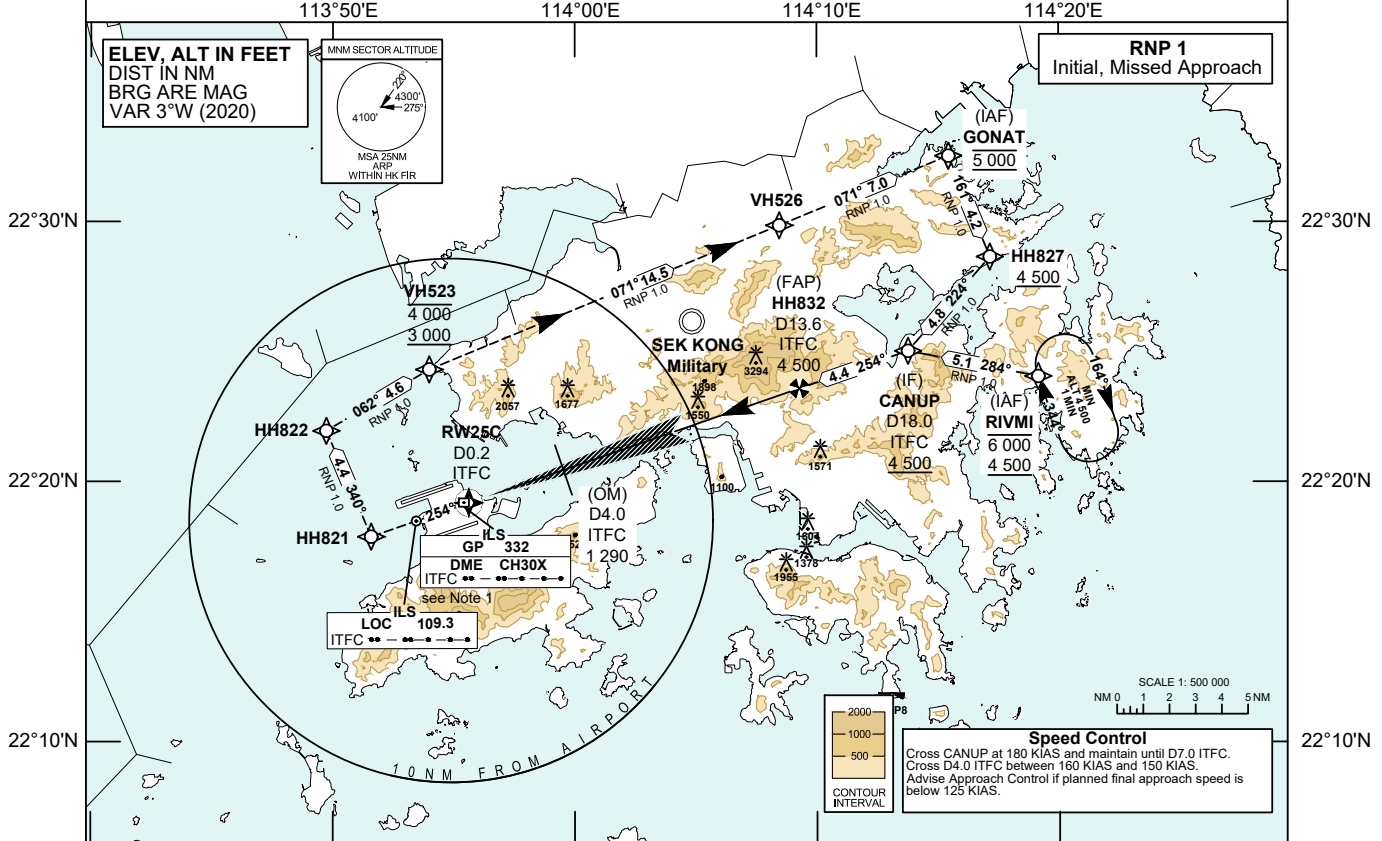


INSTRUMENT APPROACH CHART - ICAO	AERODROME ELEV 28 FT	TOWER	118.2	HONG KONG / INTL (VHHH) ILS RWY 25C CAT II & III
	HEIGHTS RELATED TO	APPROACH	119.1	
	THR RWY 25C - ELEV 22 FT	DIRECTOR	119.5	

- Warnings**
- LOC ITFC UNUSABLE BEYOND 19° RIGHT OF COURSE
 - PILOTS SHOULD MONITOR FOR FALSE CAPTURE OF LOC AND GP BY COMPARING INDICATIONS WITH AIRCRAFT POSITION AND ALTITUDE
- Notes**
- DME is required. If unable to receive ITFC DME pilot shall advise ATC and will receive equivalent radar ranges for FAP (D13.6 ITFC) and OM Fix (D4.0 ITFC).
 - Simultaneous dependent operation is authorized with RWY 25L.
 - If unable RNP 1, inform ATC accordingly. If unable RNP 1 during missed approach, continue on the published missed approach track, climb and pass Minimum Sector Altitude (MSA) 4 300 ft as soon as practicable, and continue to 5 000 ft.



MISSED APPROACH
 Climb initially to 4 000 ft and track 254°M to HH821, then turn right to HH822. Proceed to VH523 and cross VH523 between 3 000 ft and 4 000 ft. From VH523, climb to 5 000 ft and track to VH526 and GONAT.
 Speed restriction: 185 KIAS maximum until VH523, then maintain 230 KIAS until VH526, then maintain 210 KIAS until GONAT.

DME ITFC	13.6	13	12	11	10	9	8	7	6	5	4	3	2	1
DIST THR (NM)	13.4	12.8	11.8	10.8	9.8	8.8	7.8	6.8	5.8	4.8	3.8	2.8	1.8	0.8
ALTITUDE (FT)	4500	4290	3950	3610	3280	2940	2610	2280	1950	1620	1290	970	650	330

	Missed Approach Climb Gradient	OCA (OCH)				Ground Speed							
		A	B	C	D	kt	80	100	120	140	160	180	
ILS CAT I	2.5%	500 (478)				HH832-THR (13.4 NM)	min:s	10:03	8:02	6:42	5:44	5:01	4:28
	4.0%	222 (200)					ft/min	420	530	640	740	850	960
ILS CAT II	4.0%	122 (100)				ROD (5.2%)							
VISUAL CIRCLING NOT AVAILABLE		N/A											

CHANGE: Editorial.

ILS RWY 25C APPROACH

NAVIGATION AIDS

Navaid/Ident	Frequency	Coordinates		Remarks
Localizer/ITFC	109.3 MHz	22 18 30.88N	113 53 26.53E	Course 254°M
Glide Path	332.0 MHz	22 19 13.45N	113 55 24.77E	3° glide slope Co-located
DME/ITFC	CH 30X			

TABULAR DESCRIPTION: ILS RWY 25C

Serial Number	Path Descriptor	Waypoint Identifier	Fly-over	Course °M (°T)	Magnetic Variation	Distance (NM)	Turn Direction	Altitude (ft)	Speed (KIAS)	VPA	Navigation Specification
01	IF	RIVMI	-	-	+3.0	-	-	-6000 +4500	-	-	RNP 1
02	TF	CANUP	-	284 (281)	+3.0	5.1	-	+4500	@180	-	RNP 1
01	IF	GONAT	-	-	+3.0	-	-	@5000	@210	-	RNP 1
02	TF	HH827	-	161 (158)	+3.0	4.2	-	+4500	-	-	RNP 1
03	TF	CANUP	-	224 (221)	+3.0	4.8	-	+4500	@180	-	RNP 1
01	IF	CANUP	-	-	+3.0	-	-	+4500	@180	-	Conventional
02	-	HH832	-	254 (251)	+3.0	4.4	-	-	@180	-	Conventional
03	-	RW25C	Y	254 (251)	+3.0	13.4	-	-	-	-	Conventional
04	CF	HH821	-	254 (251)	+3.0	-	-	-	-185	-	RNP 1
05	TF	HH822	-	340 (337)	+3.0	4.4	-	-	@185	-	RNP 1
06	TF	VH523	-	062 (059)	+3.0	4.6	-	-4000 +3000	@185	-	RNP 1
07	TF	VH526	-	071 (068)	+3.0	14.5	-	-	@230	-	RNP 1
08	TF	GONAT	-	071 (068)	+3.0	7.0	-	@5000	@210	-	RNP 1

Note: Coding is not provided for final approach segment. Please refer to the chart for altitude and speed restrictions.

WAYPOINT LIST

ILS RWY 25C			
Waypoint Identifier	Coordinates (WGS-84)		Cross Reference from Navaid
RIVMI (IAF)	22 24 03.96N	114 19 09.28E	
GONAT (IAF)	22 32 32.30N	114 15 27.06E	
HH827	22 28 39.55N	114 17 09.59E	
CANUP (IF)	22 25 02.54N	114 13 46.40E	ITFC DME 18.0 NM
HH832 (FAP)	22 23 36.12N	114 09 16.39E	ITFC DME 13.6 NM
RW25C (THR)	22 19 12.85N	113 55 36.78E	ITFC DME 0.2 NM
HH821	22 17 54.88N	113 51 34.92E	
HH822	22 21 58.90N	113 49 43.76E	
VH523	22 24 20.51N	113 53 58.89E	
VH526	22 29 52.41N	114 08 27.15E	