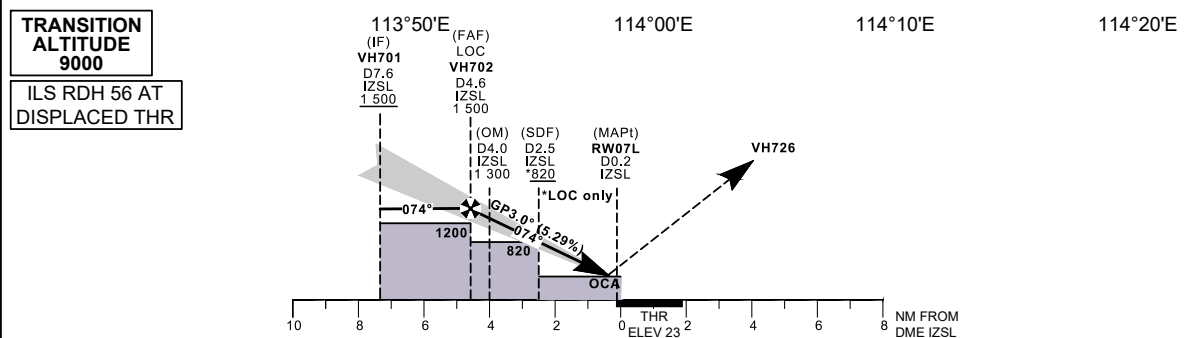
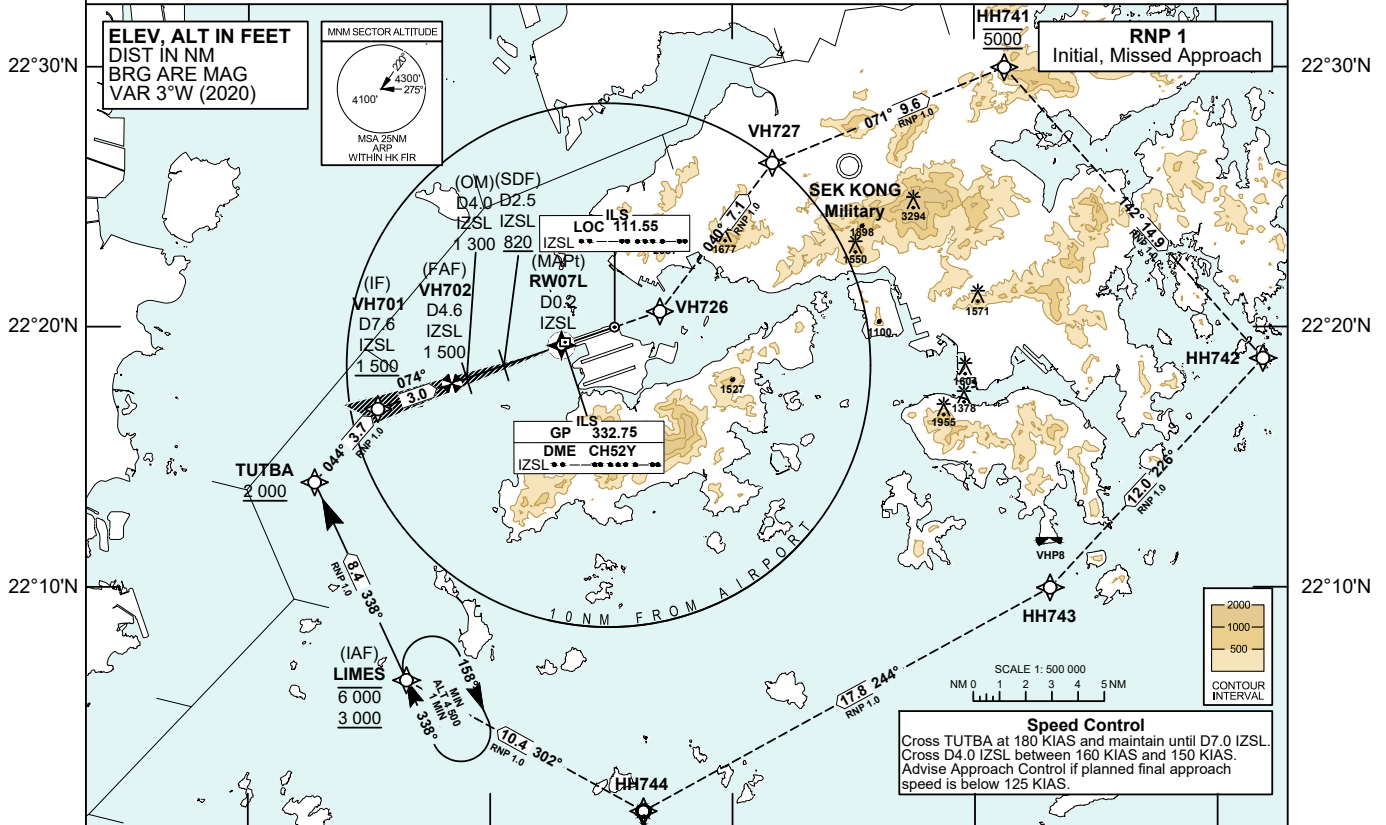


INSTRUMENT APPROACH CHART - ICAO	AERODROME ELEV 28 FT HEIGHTS RELATED TO THR RWY 07L - ELEV 23 FT	TOWER 118.7 APPROACH 119.1 DIRECTOR 119.5	HONG KONG / INTL (VHHH) ILS CAT II & III or LOC RWY 07L
---	---	---	--

- Warning**
- GP IZSL UNUSABLE BEYOND 6° LEFT OF COURSE
 - PILOTS SHOULD MONITOR FOR FALSE CAPTURE OF LOC AND GP BY COMPARING INDICATIONS WITH AIRCRAFT POSITION AND ALTITUDE
- Notes**
- DME is required.
 - If unable RNP 1, inform ATC accordingly. If unable RNP 1 during missed approach, continue on the published missed approach track, climb and pass Minimum Sector Altitude (MSA) 4 300 ft as soon as practicable, and continue to 5 000 ft.
 - Simultaneous dependent operation is authorized with RWY 07R.

113°40'E 113°50'E 114°00'E 114°10'E 114°20'E



MISSED APPROACH
Climb to 5 000 ft. Track 074°M to VH726. Then proceed to VH727, HH741, HH742, HH743, HH744 and LIMES.
Speed restriction: Maximum 200 KIAS until VH727, then maintain 230 KIAS until LIMES.

DME IZSL	4.6	4	3	2
DIST THR (NM)	4.4	3.8	2.8	1.8
ALTITUDE (FT)	1500	1300	970	650

CHANGE: GP coverage restriction.

MISSED APPROACH CLIMB GRADIENT	OCA (OCH)												
	A	B	C	D	Ground Speed	kt	80	100	120	140	160	180	
ILS CAT I	2.5%	1359 (1336)	1369 (1346)	1379 (1356)									1388 (1365)
	6.9%	223 (200)											
ILS CAT II	7.1%	123 (100)				ROD (5.3%)	ft / min	430	540	640	750	860	960
	6.6% (with SDF)	500 (470)											
LOC (GP INOP)	5.3% (without SDF)	820 (790)											
	VISUAL CIRCLING NOT AVAILABLE	N/A											

ILS or LOC RWY 07L APPROACH**NAVIGATION AIDS**

Navaid/Ident	Frequency	Coordinates		Remarks
Localizer/IZSL	111.55 MHz	22 20 00.02N	113 55 07.54E	Course 074°M
Glide Path	332.75 MHz	22 19 25.10N	113 53 05.29E	3° glide slope Co-located
DME/IZSL	CH 52Y			

TABULAR DESCRIPTION: ILS or LOC RWY 07L

Serial Number	Path Descriptor	Waypoint Identifier	Fly-over	Course °M (°T)	Magnetic Variation	Distance (NM)	Turn Direction	Altitude (ft)	Speed (KIAS)	VPA	Navigation Specification
01	IF	LIMES	-	-	+3.0	-	-	-6000 +3000	-	-	RNP 1
02	TF	TUTBA	-	338 (335)	+3.0	8.4	-	+2000	@180	-	RNP 1
03	TF	VH701	-	044 (041)	+3.0	3.7	-	+1500	@180	-	RNP 1
04	-	VH702	-	074 (071)	+3.0	3.0	-	-	-	-	Conventional
05	-	RW07L	Y	074 (071)	+3.0	4.4	-	-	-	-	Conventional
06	CF	VH726	-	074 (071)	+3.0	-	-	-	-200	-	RNP 1
07	TF	VH727	-	040 (037)	+3.0	7.1	-	-	@200	-	RNP 1
08	TF	HH741	-	071 (068)	+3.0	9.6	-	@5000	@230	-	RNP 1
09	TF	HH742	-	142 (139)	+3.0	14.9	-	-	@230	-	RNP 1
10	TF	HH743	-	226 (223)	+3.0	12.0	-	-	@230	-	RNP 1
11	TF	HH744	-	244 (241)	+3.0	17.8	-	-	@230	-	RNP 1
12	TF	LIMES	-	302 (299)	+3.0	10.4	-	-	@230	-	RNP 1

Note: Coding is not provided for final approach segment. Please refer to the chart for altitude and speed restrictions.

WAYPOINT LIST

ILS or LOC RWY 07L			
Waypoint Identifier	Coordinates (WGS-84)		Cross Reference from Navaid
LIMES (IAF)	22 06 25.60N	113 46 32.60E	
TUTBA	22 14 01.82N	113 42 44.92E	
VH701 (IF)	22 16 50.88N	113 45 21.49E	IZSL DME 7.6 NM
VH702 (FAF)	22 17 50.07N	113 48 24.64E	IZSL DME 4.6 NM
SDF, LOC only	22 18 31.81N	113 50 33.93E	IZSL DME 2.5 NM
RW07L (THR) (MAPt, LOC only)	22 19 17.72N	113 52 56.26E	IZSL DME 0.2 NM
VH726	22 20 36.29N	113 57 00.20E	
VH727	22 26 18.62N	114 01 39.19E	
HH741	22 29 58.66N	114 11 14.89E	
HH742	22 18 46.90N	114 21 54.81E	
HH743	22 09 58.85N	114 13 06.23E	
HH744	22 01 23.71N	113 56 19.34E	