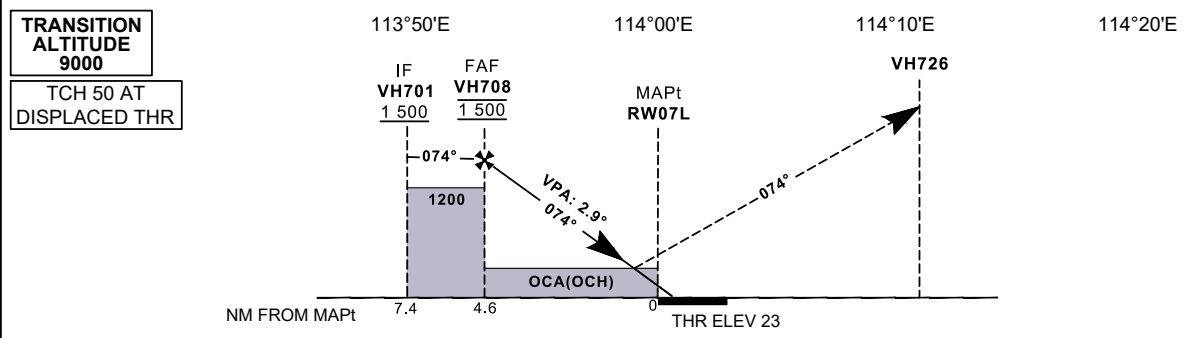
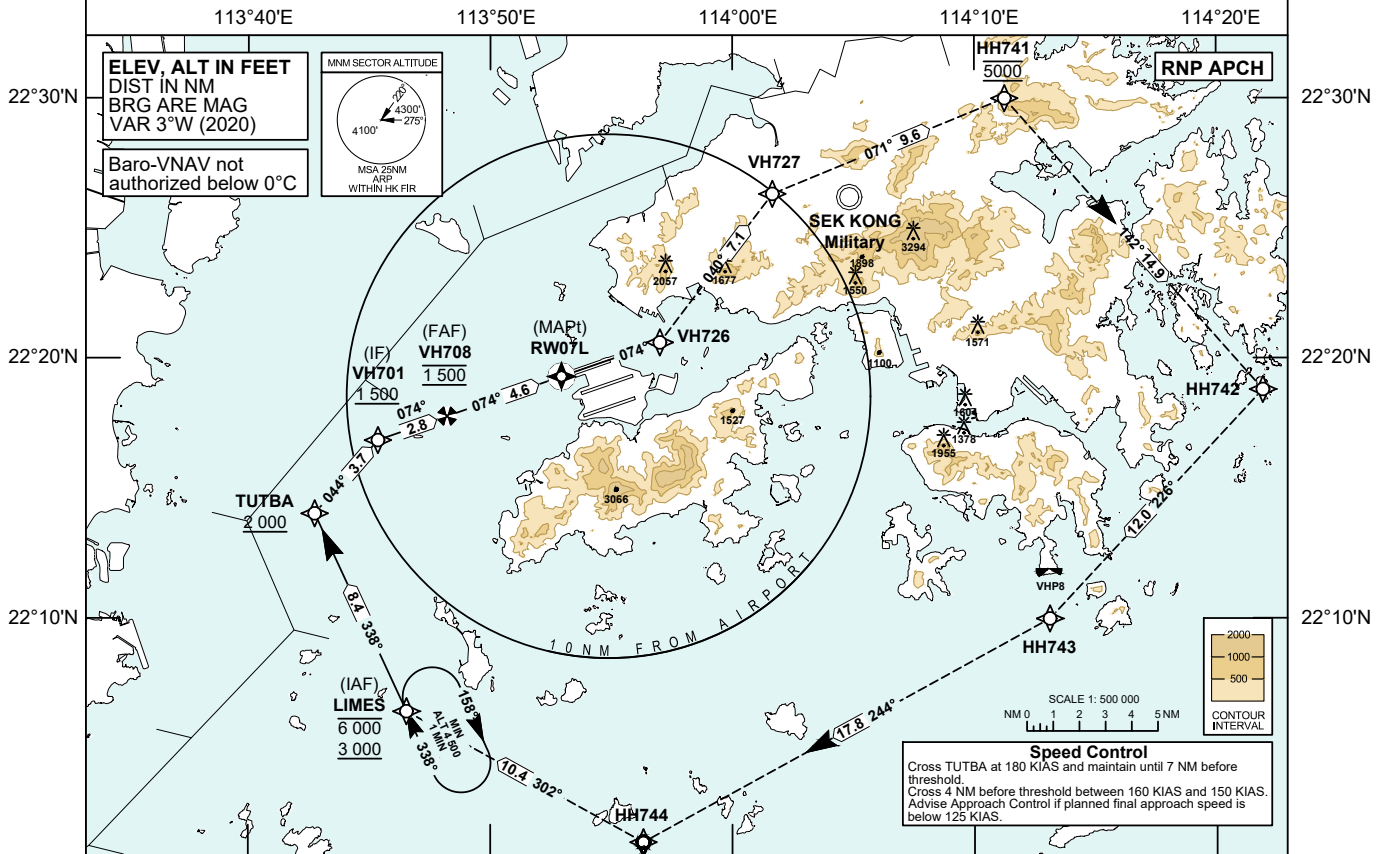


<b>INSTRUMENT APPROACH CHART - ICAO</b>	AERODROME ELEV 28 FT HEIGHTS RELATED TO THR RWY 07L - ELEV 23 FT	TOWER 118.7 APPROACH 119.1 DIRECTOR 119.5	<b>HONG KONG / INTL (VHHH) RNP RWY 07L (LNAV/VNAV only)</b>
---	--	---	---

**Notes** 1. Simultaneous dependent operation is authorized with RWY 07R.



**MISSED APPROACH**  
Climb to 5 000 ft. From RW07L track 074°M to VH726. Then proceed to VH727, HH741, HH742, HH743, HH744 and LIMES.  
Speed restriction: Maximum 200 KIAS until VH727, then maintain 230 KIAS until LIMES.

DIST THR (NM)	4.6	4	3	2	1								
ALTITUDE (FT)	1500	1300	1000	690	380								
Missed Approach Climb Gradient	<b>OCA (OCH)</b>					Ground Speed	kt	80	100	120	140	160	180
	LNAV/VNAV	6.6%	A	B	C								
VISUAL CIRCLING	N / A					VH708-THR (4.6 NM)	ft / min	410	510	620	720	820	920
NOT AVAILABLE						ROD (5.1%)							

CHANGE: Editorial.

**RNP RWY 07L APPROACH****TABULAR DESCRIPTION: RNP RWY 07L**

Serial Number	Path Descriptor	Waypoint Identifier	Fly-over	Course °M (°T)	Magnetic Variation	Distance (NM)	Turn Direction	Altitude (ft)	Speed (KIAS)	VPA	Navigation Specification
01	IF	LIMES	-	-	+3.0	-	-	-6000 +3000	-	-	RNP APCH
02	TF	TUTBA	-	338 (335)	+3.0	8.4	-	+2000	@180	-	RNP APCH
03	TF	VH701	-	044 (041)	+3.0	3.7	-	+1500	@180	-	RNP APCH
04	TF	VH708	-	074 (071)	+3.0	2.8	-	@1500	-160 +150	-	RNP APCH
05	TF	RW07L	Y	074 (071)	+3.0	4.6	-	@73	-	-2.9	RNP APCH
06	CF	VH726	-	074 (071)	+3.0	-	-	-	-200	-	RNP APCH
07	TF	VH727	-	040 (037)	+3.0	7.1	-	-	@200	-	RNP APCH
08	TF	HH741	-	071 (068)	+3.0	9.6	-	@5000	@230	-	RNP APCH
09	TF	HH742	-	142 (139)	+3.0	14.9	-	-	@230	-	RNP APCH
10	TF	HH743	-	226 (223)	+3.0	12.0	-	-	@230	-	RNP APCH
11	TF	HH744	-	244 (241)	+3.0	17.8	-	-	@230	-	RNP APCH
12	TF	LIMES	-	302 (299)	+3.0	10.4	-	-	@230	-	RNP APCH

**WAYPOINT LIST**

RNP RWY 07L		
Waypoint Identifier	Coordinates (WGS-84)	
LIMES (IAF)	22 06 25.60N	113 46 32.60E
TUTBA	22 14 01.82N	113 42 44.92E
VH701 (IF)	22 16 50.88N	113 45 21.49E
VH708 (FAF)	22 17 46.18N	113 48 12.62E
RW07L (MAPt)	22 19 17.72N	113 52 56.26E
VH726	22 20 36.29N	113 57 00.20E
VH727	22 26 18.62N	114 01 39.19E
HH741	22 29 58.66N	114 11 14.89E
HH742	22 18 46.90N	114 21 54.81E
HH743	22 09 58.85N	114 13 06.23E
HH744	22 01 23.71N	113 56 19.34E