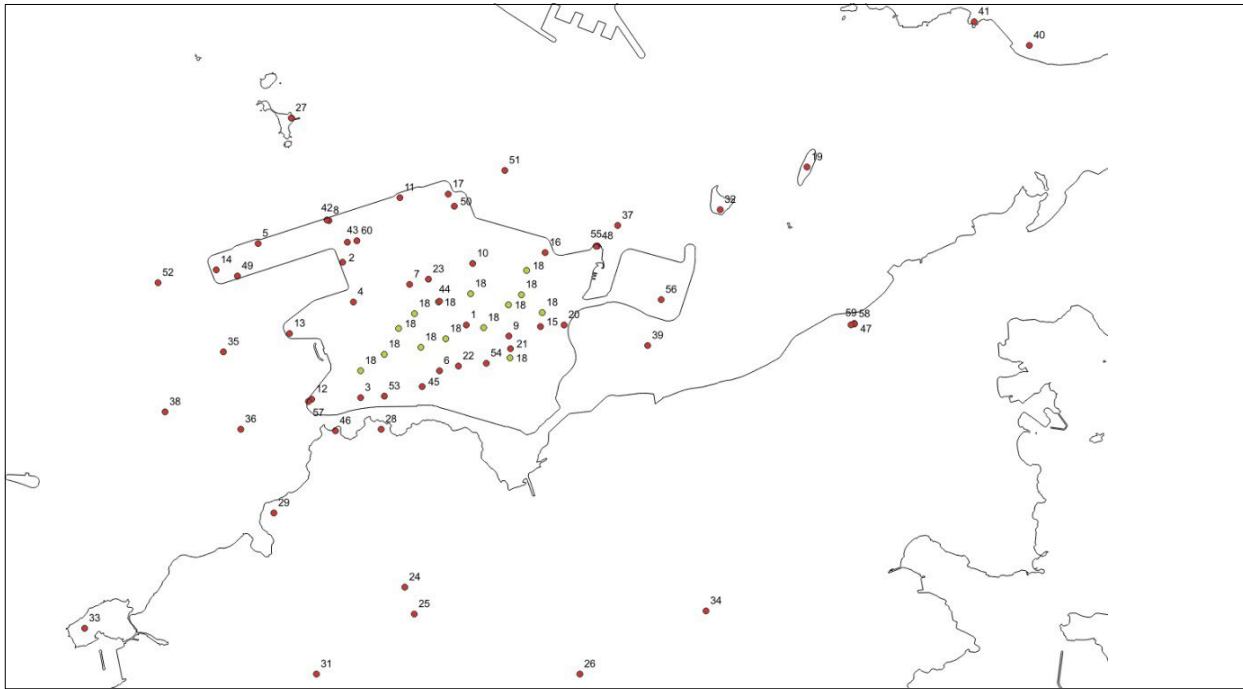


## Location of Meteorological Equipment to support Aviation Weather Service



- |  |   |
|--|---|
| 1. Meteorological Garden adjacent to S-TWR with ceilometer, rain gauge, temperature screen and barometer | 35. Weather Buoy 1  |
| 2. Meteorological Garden at West Support Area  | 36. Weather Buoy 2  |
| 3. RWY 07R TDZ anemometer, RVR transmissometer and forward scatterer                                     | 37. Weather Buoy 4  |
| 4. RWY 07C TDZ anemometer, RVR transmissometer and forward scatterer                                     | 38. Weather Buoy 5  |
| 5. RWY 07L TDZ anemometer, RVR transmissometer and forward scatterer                                     | 39. Weather Buoy 8  |
| 6. RWY 07R/25L mid-point anemometer, RVR transmissometer and forward scatterer                           | 40. Brothers Point TDWR   |
| 7. RWY 07C/25C mid-point anemometer, RVR transmissometer and forward scatterer                           | 41. Tai Lam Chung TDWR  |
| 8. RWY 07L/25R mid-point anemometer, RVR transmissometer and forward scatterer                           | 42. North Runway LIDAR 1  |
| 9. RWY 25L TDZ anemometer, RVR transmissometer and forward scatterer                                     | 43. North Runway LIDAR 2  |
| 10. RWY 25C TDZ anemometer, RVR transmissometer and forward scatterer                                    | 44. Center Runway LIDAR   |
| 11. RWY 25R TDZ anemometer, RVR transmissometer and forward scatterer                                    | 45. South Runway LIDAR  |
| 12. RWY 07R TDZ ceilometer   | 46. Sha Lo Wan wind profiler  |
| 13. RWY 07C TDZ ceilometer   | 47. Siu Ho Wan wind profiler  |
| 14. RWY 07L TDZ ceilometer   | 48. Short-range LIDAR 1 near AsiaWorld Expo                                 |
| 15. RWY 25L TDZ ceilometer   | 49. Short-range LIDAR near western end of North Runway                      |
| 16. RWY 25C TDZ ceilometer   | 50. Short-range LIDAR near eastern end of North Runway                      |
| 17. RWY 25R TDZ ceilometer   | 51. Weather Buoy 12   |
| 18. Anemometers at the apron (E9, E4, N70, D201, D219, W50, N12, S31, X458, M6, SSI, D312, D319, D323)   | 52. Weather Buoy 13   |
| 19. Siu Mo To ceilometer   | 53. Short-range LIDAR near Government Flying Service                        |
| 20. Anemometer near RWY 25L approach lights  | 54. Short-range LIDAR near Gate 3   |
| 21. Anemometer near eastern end of South Runway  | 55. Short-range LIDAR 2 near AsiaWorld-Expo                                 |
| 22. Anemometer near middle of South Runway   | 56. Short-range LIDAR near Fire Station on HZMB HK Port                     |
| 23. Anemometer near middle of Center Runway  | 57. Short-range LIDAR on South Perimeter Road near the west of South Runway |
| 24. Nei Lak Shan anemometer  | 58. Siu Ho Wan Short-range LIDAR  |
| 25. Ngong Ping anemometer  | 59. Siu Ho Wan X-Band Radar   |
| 26. Pak Kung Au anemometer   | 60. On-airport Wind Profiler  |
| 27. Sha Chau anemometer  |   |
| 28. Sha Lo Wan anemometer  |   |
| 29. Sham Wat Hilltop anemometer  |   |
| 30. (Intentionally removed)  |   |
| 31. Tai Fung Au anemometer   |   |
| 32. Tai Mo To anemometer   |   |
| 33. Tai O anemometer   |   |
| 34. Yi Tung Shan anemometer  |   |